



LABORATORY GROWN DIAMOND REPORT

LG480170910

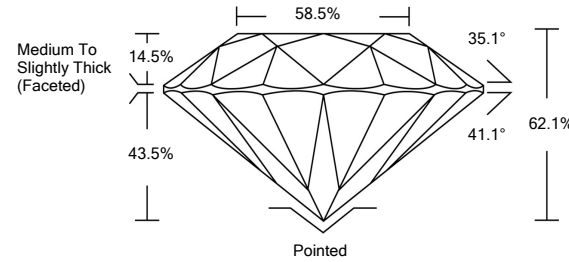
GRADING SCALES

Table with 5 columns for Color Grading Scale (CL, NC, FT, VLT, LT) and Clarity (10x) Grading Scale (FL, IF, VVS, VS, SI, I).

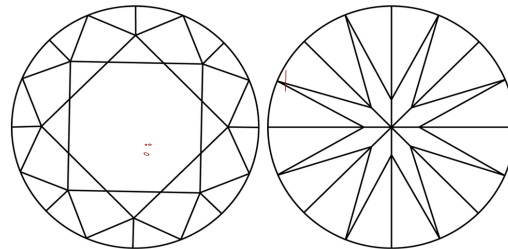
The laboratory grown diamond described in this Report (Report) has been graded, tested, analyzed, examined and/or inscribed by International Gemological Institute (IGI). A laboratory grown diamond is one that has essentially the same chemical, physical and optical properties as a mined diamond...

© INTERNATIONAL GEMOLOGICAL INSTITUTE, INC.

PROPORTIONS

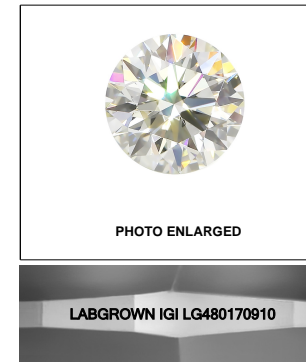


CLARITY CHARACTERISTICS



KEY TO SYMBOLS

Red symbols indicate internal characteristics. Green symbols indicate external characteristics.



LASERSCRIBESM

06/29/2021

IGI Report Number LG480170910

Shape and Cutting Style ROUND BRILLIANT

Measurements 10.10 - 10.18 x 6.30 mm

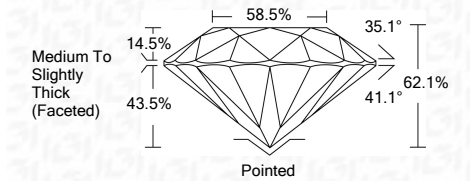
GRADING RESULTS

Carat Weight 4.02 CARATS

Color Grade I

Clarity Grade SI 1

Cut Grade IDEAL



ADDITIONAL GRADING INFORMATION

Polish EXCELLENT

Symmetry EXCELLENT

Fluorescence NONE

Inscription(s) LABGROWN IGI LG480170910

Comments: Faint Blue As Grown - No indication of post-growth treatment. This Laboratory Grown Diamond was created by High Pressure High Temperature (HPHT) growth process. Type II



IGI

Summary table of report details: IGI Report No. LG480170910, ROUND BRILLIANT, 10.10 - 10.18 x 6.30 mm, 4.02 CARATS, SI 1, IDEAL, 62.1% depth, 58.5% table, Medium To Slightly Thick (Faceted) girdle, Pointed culet, EXCELLENT polish and symmetry, NONE fluorescence, LABGROWN IGI LG480170910 inscription.

