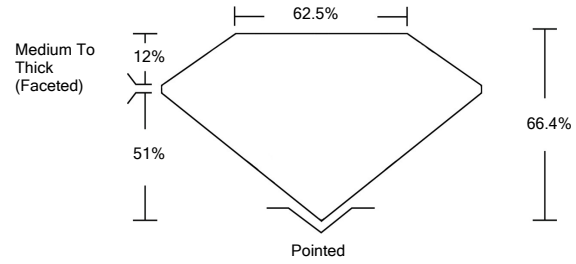




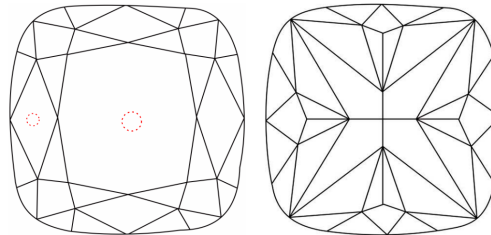
LG480174749

LABORATORY GROWN DIAMOND REPORT

PROPORTIONS



CLARITY CHARACTERISTICS



KEY TO SYMBOLS

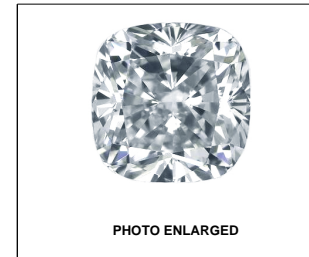
Red symbols indicate internal characteristics. Green symbols indicate external characteristics.

GRADING SCALES

Table with 5 columns for Color Grading Scale (CL, NC, FT, VLT, LT) and Clarity (10x) Grading Scale (FL, IF, VVS, VS, SI, I). Includes descriptions like 'COLORLESS D-F', 'NEAR COLORLESS G-J', etc.

The laboratory grown diamond described in this Report (Report) has been graded, tested, analyzed, examined and/or inscribed by International Gemological Institute (IGI). A laboratory grown diamond is one that has essentially the same chemical, physical and optical properties as a mined diamond...

© INTERNATIONAL GEMOLOGICAL INSTITUTE, INC.



LABGROWN IGI LG480174749

LASERSCRIBESM

06/30/2021

IGI Report Number LG480174749

Shape and Cutting Style SQUARE CUSHION MODIFIED BRILLIANT

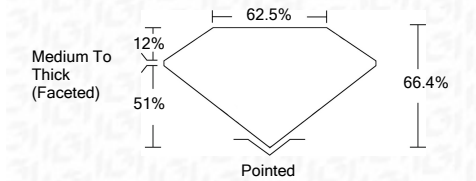
Measurements 8.65 x 8.19 x 5.44 mm

GRADING RESULTS

Carat Weight 2.98 CARATS

Color Grade F

Clarity Grade VS 2



ADDITIONAL GRADING INFORMATION

Polish EXCELLENT

Symmetry EXCELLENT

Fluorescence NONE

Inscription(s) LABGROWN IGI LG480174749

Comments: This Laboratory Grown Diamond was created by Chemical Vapor Deposition (CVD) growth process and may include post-growth treatment. Type IIa



IGI

06/30/2021 IGI Report No. LG480174749 SQUARE CUSHION MODIFIED BRILLIANT 8.65 x 8.19 x 5.44 mm 2.98 CARATS F VS 2 66.4% 62.5% Medium To Thick (Faceted) Pointed EXCELLENT EXCELLENT NONE LABGROWN IGI LG480174749

This Laboratory Grown Diamond was created by Chemical Vapor Deposition (CVD) growth process and may include post-growth treatment. Type IIa

