



LG483118939

LABORATORY GROWN DIAMOND REPORT

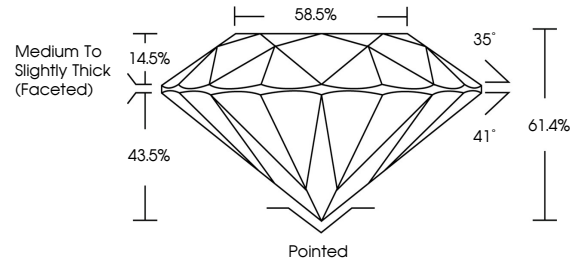
07/07/2021
IGI Report Number LG483118939
Shape and Cutting Style ROUND BRILLIANT
Measurements 6.72 - 6.77 x 4.14 mm

GRADING RESULTS
Carat Weight 1.16 CARAT
Color Grade G
Clarity Grade VS 1
Cut Grade IDEAL

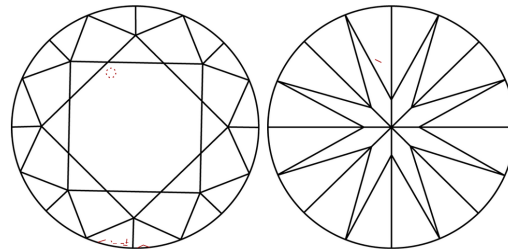
ADDITIONAL GRADING INFORMATION
Polish EXCELLENT
Symmetry EXCELLENT
Fluorescence NONE
Inscription(s) LABGROWN IGI LG483118939

Comments: This Laboratory Grown Diamond was created by Chemical Vapor Deposition (CVD) growth process and may include post-growth treatment Type IIa

PROPORTIONS



CLARITY CHARACTERISTICS



KEY TO SYMBOLS

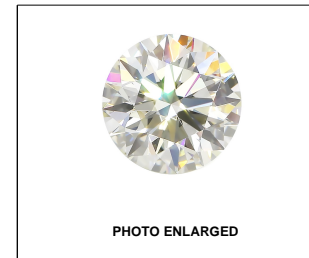
Red symbols indicate internal characteristics.
Green symbols indicate external characteristics.

GRADING SCALES

Table with 5 columns for Color Grading Scale (CL to LT) and Clarity (10x) Grading Scale (FL to I).

The laboratory grown diamond described in this Report (Report) has been graded, tested, analyzed, examined and/or inscribed by International Gemological Institute (IGI). A laboratory grown diamond is one that has essentially the same chemical, physical and optical properties as a mined diamond...

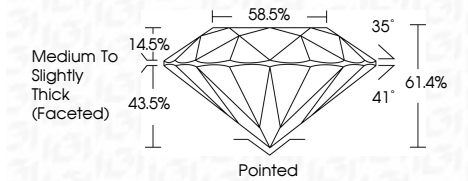
© INTERNATIONAL GEMOLOGICAL INSTITUTE, INC.



LABGROWN IGI LG483118939

LASERSCRIBE SM

07/07/2021
IGI Report Number LG483118939
Shape and Cutting Style ROUND BRILLIANT
Measurements 6.72 - 6.77 x 4.14 mm
GRADING RESULTS
Carat Weight 1.16 CARAT
Color Grade G
Clarity Grade VS 1
Cut Grade IDEAL



ADDITIONAL GRADING INFORMATION
Polish EXCELLENT
Symmetry EXCELLENT
Fluorescence NONE
Inscription(s) LABGROWN IGI LG483118939

Comments: This Laboratory Grown Diamond was created by Chemical Vapor Deposition (CVD) growth process and may include post-growth treatment Type IIa



IGI

07/07/2021
IGI Report No. LG483118939
ROUND BRILLIANT
6.72 - 6.77 x 4.14 mm
1.16 CARAT
G
VS 1
IDEAL
61.4%
58.5%
Medium to Slightly Thick (Faceted)
Pointed
EXCELLENT
EXCELLENT
NONE
LABGROWN IGI LG483118939
Comments: This Laboratory Grown Diamond was created by Chemical Vapor Deposition (CVD) growth process and may include post-growth treatment Type IIa