



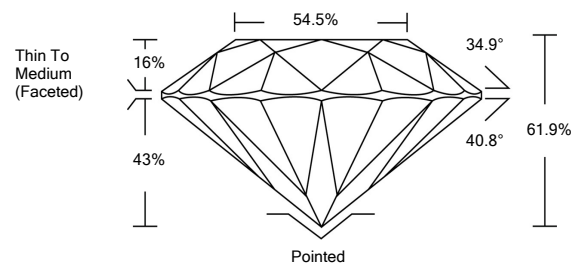
**LABORATORY GROWN DIAMOND REPORT**

July 12, 2021  
 IGI Report Number **LG485127802**  
 Description **LABORATORY GROWN  
DIAMOND**  
 Shape and Cutting Style **ROUND BRILLIANT**  
 Measurements **9.36 - 9.43 X 5.81 MM**  
**GRADING RESULTS**  
 Carat Weight **3.11 CARATS**  
 Color Grade **D**  
 Clarity Grade **VVS 2**  
 Cut Grade **IDEAL**  
**ADDITIONAL GRADING INFORMATION**  
 Polish **EXCELLENT**  
 Symmetry **EXCELLENT**  
 Fluorescence **NONE**  
 Inscription(s) **LABGROWN IGI LG485127802**

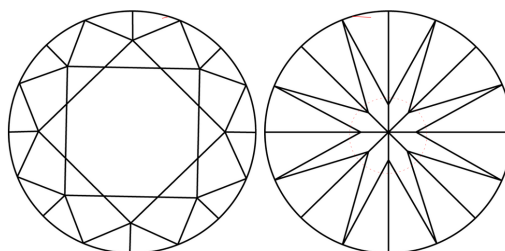
Comments: As Grown - No indication of post-growth treatment  
 This Laboratory Grown Diamond was created by High Pressure High Temperature (HPHT) growth process  
 Type II

LG485127802

**PROPORTIONS**



**CLARITY CHARACTERISTICS**

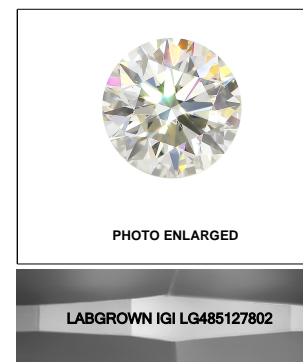


**KEY TO SYMBOLS**

Red symbols indicate internal characteristics.  
 Green symbols indicate external characteristics.

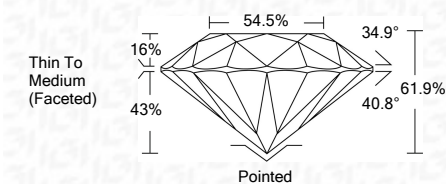
**GRADING SCALES**

COLOR GRADING SCALE	CL	NC	FT	VLT	LT	
	COLORLESS D-F	NEAR COLORLESS G-J	FAINT K-M	VERY LIGHT N-R	LIGHT S-Z	
CLARITY (10x) GRADING SCALE	FL	IF	VVS	VS	SI	I
	FLAWLESS INTERNALLY FLAWLESS	VERY VERY SLIGHTLY INCLUDED	VERY SLIGHTLY INCLUDED	SLIGHTLY INCLUDED	INCLUDED	INCLUDED



LASERSCRIBE<sup>SM</sup>

July 12, 2021  
 IGI Report Number **LG485127802**  
 Description **LABORATORY GROWN  
DIAMOND**  
 Shape and Cutting Style **ROUND BRILLIANT**  
 Measurements **9.36 - 9.43 X 5.81 MM**  
**GRADING RESULTS**  
 Carat Weight **3.11 CARATS**  
 Color Grade **D**  
 Clarity Grade **VVS 2**  
 Cut Grade **IDEAL**



**ADDITIONAL GRADING INFORMATION**  
 Polish **EXCELLENT**  
 Symmetry **EXCELLENT**  
 Fluorescence **NONE**  
 Inscription(s) **LABGROWN IGI LG485127802**

Comments: As Grown - No indication of post-growth treatment  
 This Laboratory Grown Diamond was created by High Pressure High Temperature (HPHT) growth process  
 Type II



**IGI**

July 12, 2021  
 IGI Report No. LG485127802  
**ROUND BRILLIANT**  
 9.36 - 9.43 X 5.81 MM  
 Carat Weight **3.11 CARATS**  
 Color Grade **D**  
 Clarity Grade **VVS 2**  
 Cut Grade **IDEAL**  
 Depth **61.9%**  
 Table **54.5%**  
 Girdle **Thin To Medium (Faceted)**  
 Culet **Pointed**  
 Polish **EXCELLENT**  
 Symmetry **EXCELLENT**  
 Fluorescence **NONE**  
 Inscription(s) **LABGROWN IGI LG485127802**  
 Comments: As Grown - No indication of post-growth treatment  
 This Laboratory Grown Diamond was created by High Pressure High Temperature (HPHT) growth process  
 Type II