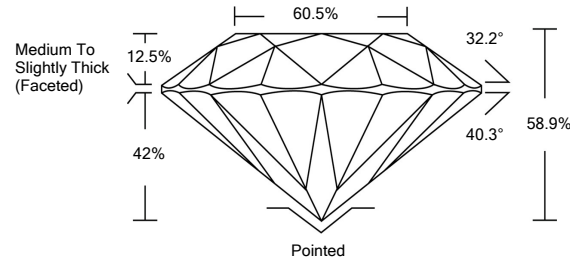




LG485136665

LABORATORY GROWN DIAMOND REPORT

PROPORTIONS



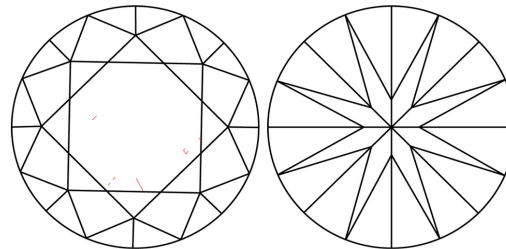
GRADING SCALES

Table with 5 columns: CL (Colorless D-F), NC (Near Colorless G-J), FT (Faint K-M), VLT (Very Light N-R), LT (Light S-Z); FL (Flawless Internally Flawless), IF (Internally Flawless), VVS (Very Very Slightly Included), VS (Very Slightly Included), SI (Slightly Included), I (Included)

The laboratory grown diamond described in this Report (Report) has been graded, tested, analyzed, examined and/or inscribed by International Gemological Institute (IGI). A laboratory grown diamond is one that has essentially the same chemical, physical and optical properties as a mined diamond...

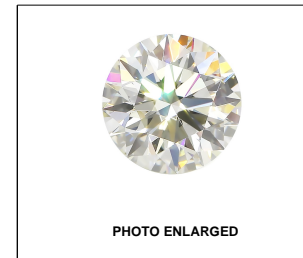
© INTERNATIONAL GEMOLOGICAL INSTITUTE, INC.

CLARITY CHARACTERISTICS



KEY TO SYMBOLS

Red symbols indicate internal characteristics. Green symbols indicate external characteristics.



LABGROWN IGI LG485136665

LASERSCRIBESM

07/14/2021

IGI Report Number LG485136665

Shape and Cutting Style ROUND BRILLIANT

Measurements 8.99 - 9.08 x 5.33 mm

GRADING RESULTS

Carat Weight 2.70 CARATS

Color Grade J

Clarity Grade SI 1

Cut Grade EXCELLENT

ADDITIONAL GRADING INFORMATION

Polish EXCELLENT

Symmetry EXCELLENT

Fluorescence NONE

Inscription(s) LABGROWN IGI LG485136665

Comments: This Laboratory Grown Diamond was created by Chemical Vapor Deposition (CVD) growth process and may include post-growth treatment. Type IIa



IGI

Summary table of diamond details: IGI Report No. LG485136665, ROUND BRILLIANT, 8.99 - 9.08 x 5.33 mm, 2.70 CARATS, J, SI 1, EXCELLENT, 58.9%, 60.5%, Medium To Slightly Thick (Faceted), Pointed, EXCELLENT, EXCELLENT, NONE, LABGROWN IGI LG485136665

Comments: This Laboratory Grown Diamond was created by Chemical Vapor Deposition (CVD) growth process and may include post-growth treatment. Type IIa

