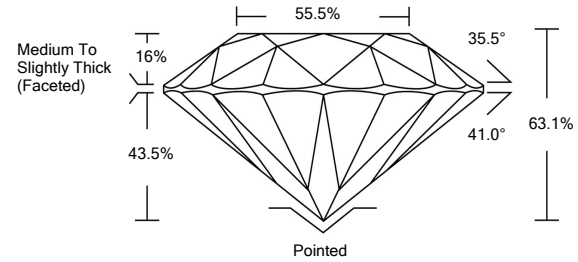




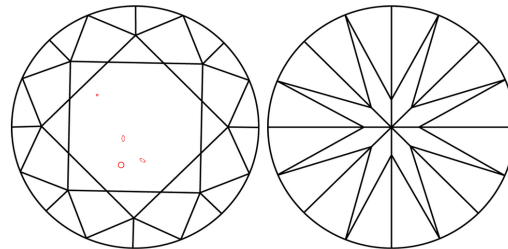
LABORATORY GROWN DIAMOND REPORT

LG485160963

PROPORTIONS



CLARITY CHARACTERISTICS



KEY TO SYMBOLS

Red symbols indicate internal characteristics.
Green symbols indicate external characteristics.

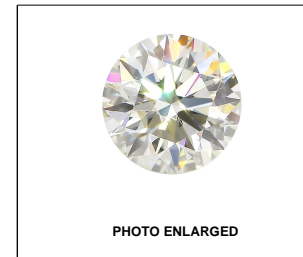
GRADING SCALES

COLOR GRADING SCALE	CL	NC	FT	VL	LT	
COLORLESS D-F		NEAR COLORLESS G-J	FAINT K-M	VERY LIGHT N-R	LIGHT S-Z	
CLARITY (10x) GRADING SCALE	FL	IF	VVS	VS	SI	I
FLAWLESS INTERNALLY FLAWLESS		VERY VERY SLIGHTLY INCLUDED	VERY SLIGHTLY INCLUDED	SLIGHTLY INCLUDED	INCLUDED	

The laboratory grown diamond described in this Report (Report) has been graded, tested, analyzed, examined and/or inscribed by International Gemological Institute (IGI). A laboratory grown diamond is one that has essentially the same chemical, physical and optical properties as a mined diamond, with the exception of being grown by man (a manufactured product). IGI employs and utilizes those techniques and equipment currently available to IGI, including, without limitation, 10X magnification, corrected triplet loupe, binocular microscope, master color comparison stones, non-contact-optical measuring device, Diamond Sure™, Diamond View™, Spectrophotometer and such other instruments and/or processes as deemed appropriate by IGI. This Report includes advanced security features. A duly accredited gemologist or jeweler can advise you with respect to the importance of and interrelationship between cut, color, clarity and carat weight.

THIS REPORT IS NEITHER A GUARANTEE, VALUATION, NOR APPRAISAL OF THE GEMSTONE DESCRIBED HEREIN. PLEASE REVIEW THE LIMITATIONS AND RESTRICTIONS SET FORTH ONLINE. FOR ADDITIONAL INFORMATION, IMPORTANT LIMITATIONS AND DISCLAIMERS, PLEASE GO TO WWW.IGI.ORG OR CALL 1-888-BUY-IGI.

© INTERNATIONAL GEMOLOGICAL INSTITUTE, INC.



LABGROWN IGI LG485160963

LASERSCRIBESM

07/13/2021

IGI Report Number **LG485160963**

Shape and Cutting Style **ROUND BRILLIANT**

Measurements **7.56 - 7.61 x 4.79 mm**

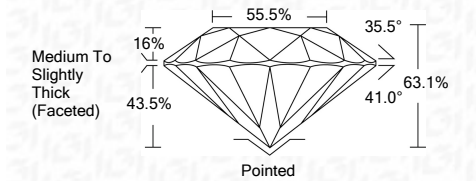
GRADING RESULTS

Carat Weight **1.70 CARAT**

Color Grade **E**

Clarity Grade **SI 1**

Cut Grade **EXCELLENT**



ADDITIONAL GRADING INFORMATION

Polish **EXCELLENT**

Symmetry **EXCELLENT**

Fluorescence **NONE**

Inscription(s) **LABGROWN IGI LG485160963**

Comments: As Grown - No indication of post-growth treatment.
This Laboratory Grown Diamond was created by High Pressure High Temperature (HPHT) growth process.
Type II



IGI

IGI Report No. LG485160963	1.70 CARAT	E	SI 1	EXCELLENT	EXCELLENT	EXCELLENT	LABGROWN IGI LG485160963
ROUND BRILLIANT	7.56 - 7.61 x 4.79 mm	Medium To Slightly Thick (Faceted)	Pointed	EXCELLENT	EXCELLENT	EXCELLENT	As Grown - No indication of post-growth treatment. This Laboratory Grown Diamond was created by High Pressure High Temperature (HPHT) growth process. Type II
Carat Weight	7.56 - 7.61 x 4.79 mm	63.1%	55.5%	35.5°	41.0°	63.1%	
Color Grade	E	63.1%	55.5%	35.5°	41.0°	63.1%	
Clarity Grade	SI 1	63.1%	55.5%	35.5°	41.0°	63.1%	
Cut Grade	EXCELLENT	63.1%	55.5%	35.5°	41.0°	63.1%	
Polish	EXCELLENT	63.1%	55.5%	35.5°	41.0°	63.1%	
Symmetry	EXCELLENT	63.1%	55.5%	35.5°	41.0°	63.1%	
Fluorescence	NONE	63.1%	55.5%	35.5°	41.0°	63.1%	
Inscription(s)	LABGROWN IGI LG485160963	63.1%	55.5%	35.5°	41.0°	63.1%	