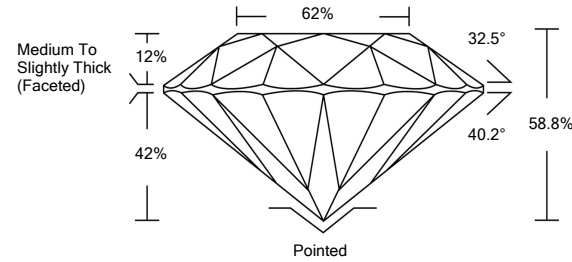




LG485161770

LABORATORY GROWN DIAMOND REPORT

PROPORTIONS

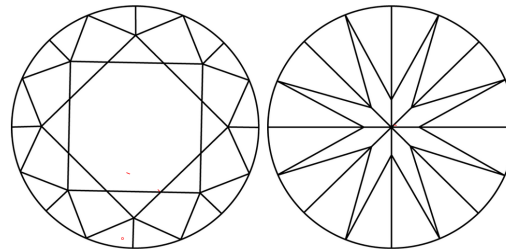


GRADING SCALES

Table with 5 columns for Color, Clarity, and Cut grading scales.

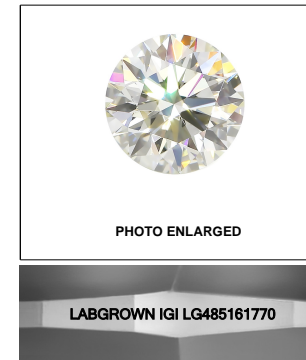
The laboratory grown diamond described in this Report (Report) has been graded, tested, analyzed, examined and/or inscribed by International Gemological Institute (IGI). A laboratory grown diamond is one that has essentially the same chemical, physical and optical properties as a mined diamond...

CLARITY CHARACTERISTICS



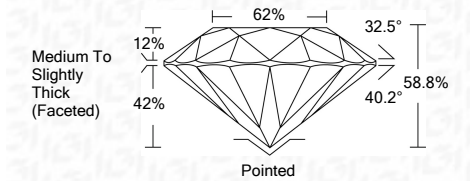
KEY TO SYMBOLS

Red symbols indicate internal characteristics. Green symbols indicate external characteristics.



LASERSCRIBESM

07/14/2021 IGI Report Number LG485161770 Shape and Cutting Style ROUND BRILLIANT Measurements 8.78 - 8.81 x 5.18 mm GRADING RESULTS Carat Weight 2.50 CARATS Color Grade J Clarity Grade VS 1 Cut Grade EXCELLENT



ADDITIONAL GRADING INFORMATION Polish EXCELLENT Symmetry EXCELLENT Fluorescence NONE Inscription(s) LABGROWN IGI LG485161770

Comments: This Laboratory Grown Diamond was created by Chemical Vapor Deposition (CVD) growth process and may include post-growth treatment. Type IIa



IGI

07/14/2021 IGI Report No. LG485161770 ROUND BRILLIANT 8.78 - 8.81 x 5.18 mm 2.50 CARATS J VS 1 EXCELLENT 58.8% 62% Medium To Slightly Thick (Faceted) Pointed EXCELLENT EXCELLENT NONE LABGROWN IGI LG485161770