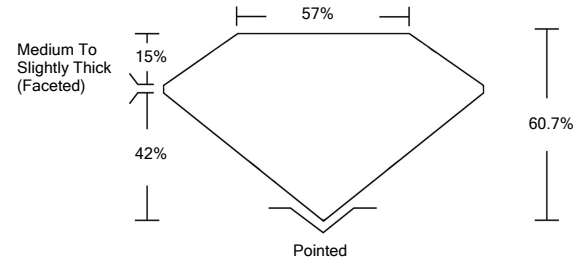




LG485162482

LABORATORY GROWN DIAMOND REPORT

PROPORTIONS

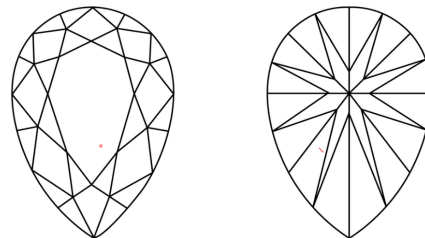


GRADING SCALES

Table with 5 columns for Color Grading Scale (CL, NC, FT, VLT, LT) and 5 columns for Clarity (10x) Grading Scale (FL, IF, VVS, VS, SI, I). Includes sub-labels like 'COLORLESS D-F', 'NEAR COLORLESS G-J', etc.

The laboratory grown diamond described in this Report (Report) has been graded, tested, analyzed, examined and/or inscribed by International Gemological Institute (IGI). A laboratory grown diamond is one that has essentially the same chemical, physical and optical properties as a mined diamond...

CLARITY CHARACTERISTICS



KEY TO SYMBOLS

Red symbols indicate internal characteristics. Green symbols indicate external characteristics.

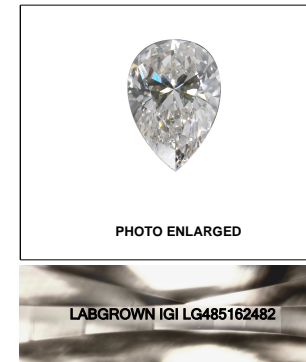


PHOTO ENLARGED LASERSCRIBE<sup>SM</sup>

08/07/2021

IGI Report Number LG485162482

Shape and Cutting Style PEAR BRILLIANT

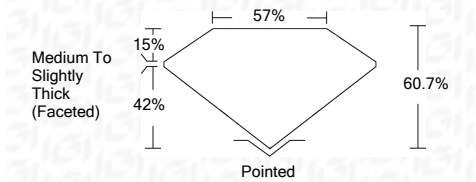
Measurements 15.06 x 9.76 x 5.92 mm

GRADING RESULTS

Carat Weight 5.03 CARATS

Color Grade E

Clarity Grade VS 1



ADDITIONAL GRADING INFORMATION

Polish EXCELLENT

Symmetry EXCELLENT

Fluorescence NONE

Inscription(s) LABGROWN IGI LG485162482

Comments: As Grown - No indication of post-growth treatment. This Laboratory Grown Diamond was created by High Pressure High Temperature (HPHT) growth process. Type II



08/07/2021 IGI Report No. LG485162482 PEAR BRILLIANT 15.06 x 9.76 x 5.92 mm 5.03 CARATS E VS 1 60.7% 57% Medium To Slightly Thick (Faceted) Pointed EXCELLENT EXCELLENT NONE LABGROWN IGI LG485162482

As Grown - No indication of post-growth treatment. This Laboratory Grown Diamond was created by High Pressure High Temperature (HPHT) growth process. Type II

