



LG487108181

LABORATORY GROWN DIAMOND REPORT

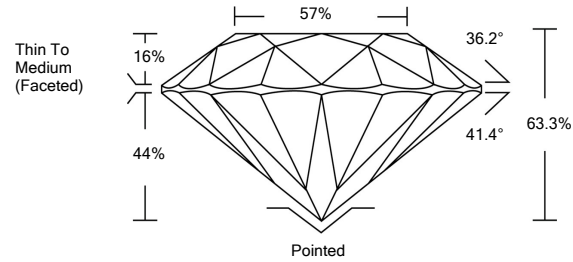
07/28/2021
IGI Report Number LG487108181
Shape and Cutting Style ROUND BRILLIANT
Measurements 8.85 - 8.87 x 5.61 mm

GRADING RESULTS
Carat Weight 2.70 CARATS
Color Grade I
Clarity Grade VS 2
Cut Grade EXCELLENT

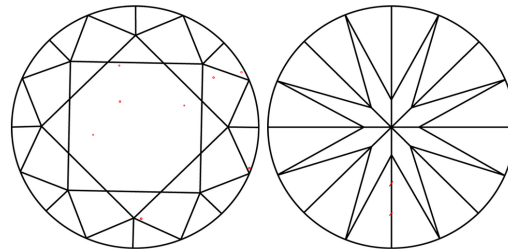
ADDITIONAL GRADING INFORMATION
Polish EXCELLENT
Symmetry EXCELLENT
Fluorescence NONE
Inscription(s) LABGROWN IGI LG487108181

Comments: This Laboratory Grown Diamond was created by Chemical Vapor Deposition (CVD) growth process and may include post-growth treatment. Type IIa

PROPORTIONS



CLARITY CHARACTERISTICS



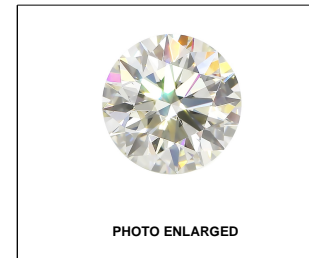
KEY TO SYMBOLS

Red symbols indicate internal characteristics. Green symbols indicate external characteristics.

GRADING SCALES

Table with 5 columns for Color Grading Scale (CL to LT) and Clarity (10x) Grading Scale (FL to I).

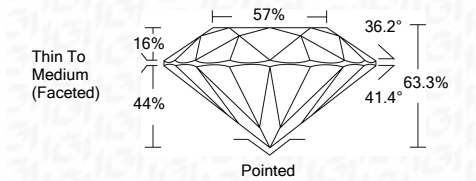
The laboratory grown diamond described in this Report (Report) has been graded, tested, analyzed, examined and/or inscribed by International Gemological Institute (IGI). A laboratory grown diamond is one that has essentially the same chemical, physical and optical properties as a mined diamond...



LABGROWN IGI LG487108181

LASERSCRIBE SM

07/28/2021
IGI Report Number LG487108181
Shape and Cutting Style ROUND BRILLIANT
Measurements 8.85 - 8.87 x 5.61 mm
GRADING RESULTS
Carat Weight 2.70 CARATS
Color Grade I
Clarity Grade VS 2
Cut Grade EXCELLENT



ADDITIONAL GRADING INFORMATION
Polish EXCELLENT
Symmetry EXCELLENT
Fluorescence NONE
Inscription(s) LABGROWN IGI LG487108181

Comments: This Laboratory Grown Diamond was created by Chemical Vapor Deposition (CVD) growth process and may include post-growth treatment. Type IIa



IGI

07/28/2021
IGI Report No. LG487108181
ROUND BRILLIANT
8.85 - 8.87 x 5.61 mm
2.70 CARATS
Color Grade I
Clarity Grade VS 2
Cut Grade EXCELLENT
Depth 63.3%
Table 57%
Girdle Thin To Medium (Faceted)
Culet Pointed
Polish EXCELLENT
Symmetry EXCELLENT
Fluorescence NONE
Inscription(s) LABGROWN IGI LG487108181
Comments: This Laboratory Grown Diamond was created by Chemical Vapor Deposition (CVD) growth process and may include post-growth treatment. Type IIa