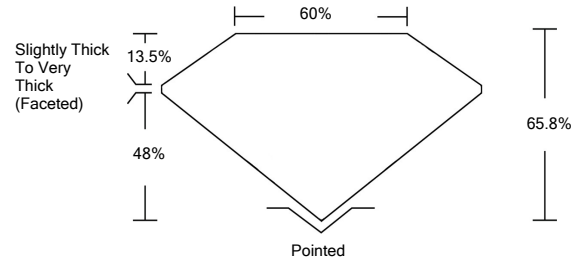




LG487108987

LABORATORY GROWN DIAMOND REPORT

PROPORTIONS

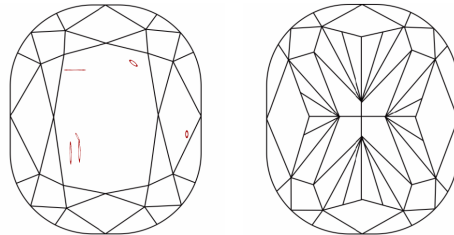


GRADING SCALES

Table with 5 columns for Color Grading Scale (CL, NC, FT, VLT, LT) and Clarity (10x) Grading Scale (FL, IF, VVS, VS, SI, I).

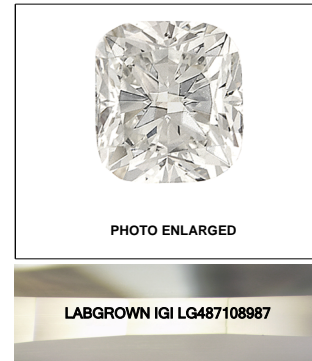
The laboratory grown diamond described in this Report (Report) has been graded, tested, analyzed, examined and/or inscribed by International Gemological Institute (IGI). A laboratory grown diamond is one that has essentially the same chemical, physical and optical properties as a mined diamond...

CLARITY CHARACTERISTICS



KEY TO SYMBOLS

Red symbols indicate internal characteristics. Green symbols indicate external characteristics.



LASERSCRIBE<sup>SM</sup>

08/11/2021

IGI Report Number LG487108987

Shape and Cutting Style CUSHION BRILLIANT

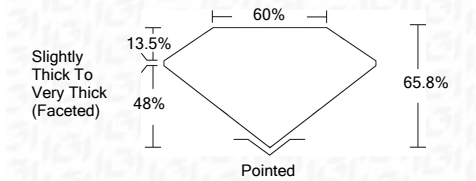
Measurements 6.97 x 6.11 x 4.02 mm

GRADING RESULTS

Carat Weight 1.54 CARAT

Color Grade D

Clarity Grade SI 1



ADDITIONAL GRADING INFORMATION

Polish EXCELLENT

Symmetry EXCELLENT

Fluorescence NONE

Inscription(s) LABGROWN IGI LG487108987

Comments: As Grown - No indication of post-growth treatment.

This Laboratory Grown Diamond was created by High Pressure High Temperature (HPHT) growth process. Type II



IGI

08/11/2021 IGI Report No. LG487108987 CUSHION BRILLIANT 6.97 x 6.11 x 4.02 mm 1.54 CARAT D SI 1 65.8% 60% Slightly Thick To Very Thick (Faceted) Pointed EXCELLENT EXCELLENT NONE LABGROWN IGI LG487108987

As Grown - No indication of post-growth treatment. This Laboratory Grown Diamond was created by High Pressure High Temperature (HPHT) growth process. Type II

