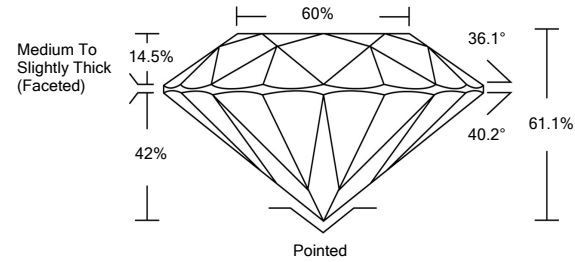




LG487172982

LABORATORY GROWN DIAMOND REPORT

PROPORTIONS

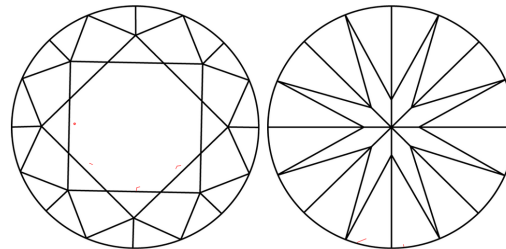


GRADING SCALES

Table with 5 columns for Color Grading Scale (CL, NC, FT, VLT, LT) and Clarity (10x) Grading Scale (FL, IF, VVS, VS, SI, I).

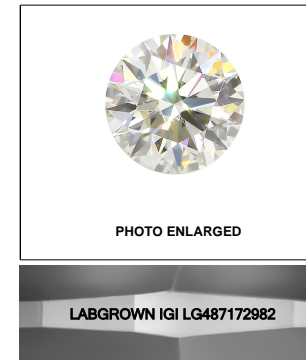
The laboratory grown diamond described in this Report (Report) has been graded, tested, analyzed, examined and/or inscribed by International Gemological Institute (IGI). A laboratory grown diamond is one that has essentially the same chemical, physical and optical properties as a mined diamond...

CLARITY CHARACTERISTICS



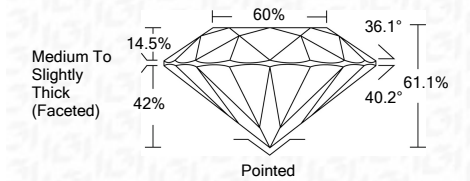
KEY TO SYMBOLS

Red symbols indicate internal characteristics. Green symbols indicate external characteristics.



LASERSCRIBE<sup>SM</sup>

07/20/2021 IGI Report Number LG487172982 Shape and Cutting Style ROUND BRILLIANT Measurements 8.00 - 8.07 x 4.92 mm GRADING RESULTS Carat Weight 2.00 CARATS Color Grade J Clarity Grade VS 2 Cut Grade EXCELLENT



ADDITIONAL GRADING INFORMATION

Polish EXCELLENT Symmetry EXCELLENT Fluorescence NONE Inscription(s) LABGROWN IGI LG487172982

Comments: This Laboratory Grown Diamond was created by Chemical Vapor Deposition (CVD) growth process and may include post-growth treatment. Type IIa



IGI

07/20/2021 IGI Report No. LG487172982 ROUND BRILLIANT 8.00 - 8.07 x 4.92 mm Carat Weight 2.00 CARATS Color Grade J Clarity Grade VS 2 Cut Grade EXCELLENT Depth 61.1% Table 60% Girdle Medium To Slightly Thick (Faceted) Culet Pointed Polish EXCELLENT Symmetry EXCELLENT Fluorescence NONE Inscription(s) LABGROWN IGI LG487172982 Comments: This Laboratory Grown Diamond was created by Chemical Vapor Deposition (CVD) growth process and may include post-growth treatment. Type IIa

