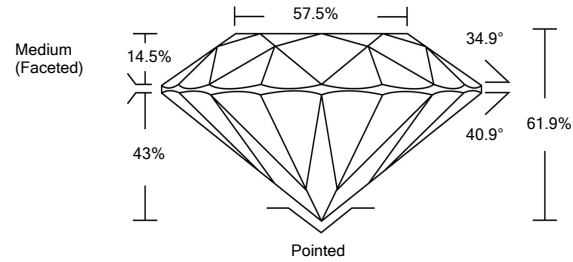




LG487173464

LABORATORY GROWN DIAMOND REPORT

PROPORTIONS



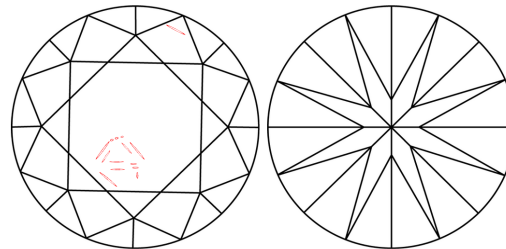
GRADING SCALES

Table with 5 columns: CL, NC, FT, VLT, LT and 2 rows: COLOR GRADING SCALE, CLARITY (10x) GRADING SCALE

The laboratory grown diamond described in this Report (Report) has been graded, tested, analyzed, examined and/or inscribed by International Gemological Institute (IGI). A laboratory grown diamond is one that has essentially the same chemical, physical and optical properties as a mined diamond...

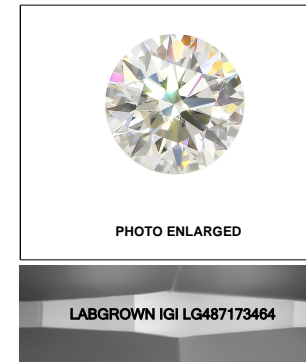
© INTERNATIONAL GEMOLOGICAL INSTITUTE, INC.

CLARITY CHARACTERISTICS



KEY TO SYMBOLS

Red symbols indicate internal characteristics. Green symbols indicate external characteristics.



07/24/2021

IGI Report Number LG487173464

Shape and Cutting Style ROUND BRILLIANT

Measurements 11.18 - 11.21 x 6.93 mm

GRADING RESULTS

Carat Weight 5.39 CARATS

Color Grade E

Clarity Grade SI 2

Cut Grade IDEAL

ADDITIONAL GRADING INFORMATION

Polish EXCELLENT

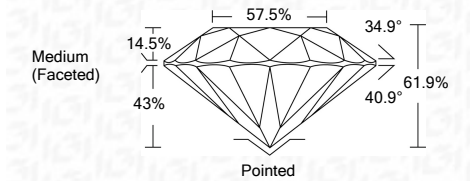
Symmetry EXCELLENT

Fluorescence NONE

Inscription(s) LABGROWN IGI LG487173464

Comments: As Grown - No indication of post-growth treatment.

This Laboratory Grown Diamond was created by High Pressure High Temperature (HPHT) growth process. Type II



IGI

Summary table of report details: IGI Report No. LG487173464, ROUND BRILLIANT, 11.18 - 11.21 x 6.93 mm, 5.39 CARATS, E, SI 2, IDEAL, 61.9%, 57.5%, Medium (Faceted), Pointed, EXCELLENT, EXCELLENT, NONE, LABGROWN IGI LG487173464

