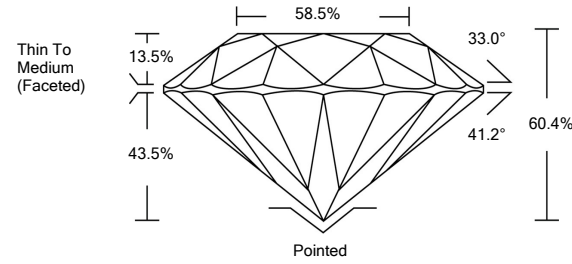




LG487199093

LABORATORY GROWN DIAMOND REPORT

PROPORTIONS



GRADING SCALES

COLOR GRADING SCALE	CL	NC	FT	VL	LT	
	COLORLESS D-F	NEAR COLORLESS G-J	FAINT K-M	VERY LIGHT N-R	LIGHT S-Z	
CLARITY (10x) GRADING SCALE	FL	IF	VVS	VS	SI	I
	FLAWLESS INTERNALLY FLAWLESS	VERY VERY SLIGHTLY INCLUDED	VERY SLIGHTLY INCLUDED	SLIGHTLY INCLUDED	INCLUDED	

The laboratory grown diamond described in this Report (Report) has been graded, tested, analyzed, examined and/or inscribed by International Gemological Institute (IGI). A laboratory grown diamond is one that has essentially the same chemical, physical and optical properties as a mined diamond, with the exception of being grown by man (a manufactured product). IGI employs and utilizes those techniques and equipment currently available to IGI, including, without limitation, 10X magnification, corrected triplet loupe, binocular microscope, master color comparison stones, non-contact-optical measuring device, Diamond Sure™, Diamond View™, Spectrophotometer and such other instruments and/or processes as deemed appropriate by IGI. This Report includes advanced security features. A duly accredited gemologist or jeweler can advise you with respect to the importance of and interrelationship between cut, color, clarity and carat weight.

THIS REPORT IS NEITHER A GUARANTEE, VALUATION, NOR APPRAISAL OF THE GEMSTONE DESCRIBED HEREIN. PLEASE REVIEW THE LIMITATIONS AND RESTRICTIONS SET FORTH ONLINE. FOR ADDITIONAL INFORMATION, IMPORTANT LIMITATIONS AND DISCLAIMERS, PLEASE GO TO WWW.IGI.ORG OR CALL 1-888-BUY-IGIS.

© INTERNATIONAL GEMOLOGICAL INSTITUTE, INC.

08/04/2021

IGI Report Number **LG487199093**

Shape and Cutting Style **ROUND BRILLIANT**

Measurements **6.74 - 6.78 x 4.09 mm**

GRADING RESULTS

Carat Weight **1.13 CARAT**

Color Grade **G**

Clarity Grade **VS 2**

Cut Grade **IDEAL**

08/04/2021

IGI Report Number **LG487199093**

Shape and Cutting Style **ROUND BRILLIANT**

Measurements **6.74 - 6.78 x 4.09 mm**

GRADING RESULTS

Carat Weight **1.13 CARAT**

Color Grade **G**

Clarity Grade **VS 2**

Cut Grade **IDEAL**

ADDITIONAL GRADING INFORMATION

Polish **EXCELLENT**

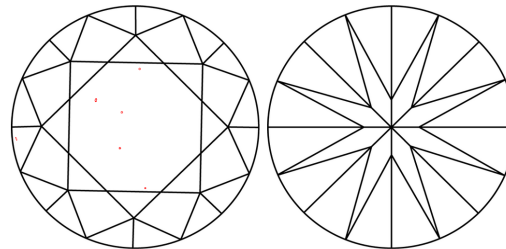
Symmetry **EXCELLENT**

Fluorescence **NONE**

Inscription(s) **LABGROWN IGI LG487199093**

Comments: This Laboratory Grown Diamond was created by Chemical Vapor Deposition (CVD) growth process and may include post-growth treatment. Type IIa

CLARITY CHARACTERISTICS



KEY TO SYMBOLS

Red symbols indicate internal characteristics.
Green symbols indicate external characteristics.

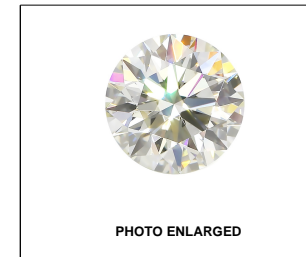
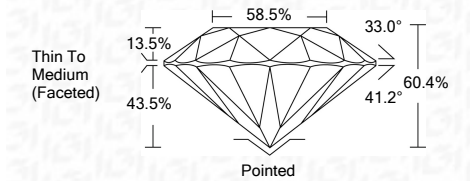


PHOTO ENLARGED



LABGROWN IGI LG487199093

LASERSCRIBESM



ADDITIONAL GRADING INFORMATION

Polish **EXCELLENT**

Symmetry **EXCELLENT**

Fluorescence **NONE**

Inscription(s) **LABGROWN IGI LG487199093**

Comments: This Laboratory Grown Diamond was created by Chemical Vapor Deposition (CVD) growth process and may include post-growth treatment. Type IIa



IGI

08/04/2021	IGI Report No. LG487199093	1.13 CARAT	G
IGI Report No. LG487199093	ROUND BRILLIANT	VS 2	VS 2
6.74 - 6.78 x 4.09 mm	6.74 - 6.78 x 4.09 mm	IDEAL	IDEAL
Carat Weight	1.13 CARAT	60.4%	60.4%
Color Grade	G	58.5%	58.5%
Clarity Grade	VS 2	Thin To Medium (Faceted)	Thin To Medium (Faceted)
Cut Grade	IDEAL	Pointed	Pointed
Depth	60.4%	EXCELLENT	EXCELLENT
Table	58.5%	EXCELLENT	EXCELLENT
Girdle		NONE	NONE
Culet		LABGROWN IGI LG487199093	LABGROWN IGI LG487199093
Polish	EXCELLENT	Comments:	This Laboratory Grown Diamond was created by Chemical Vapor Deposition (CVD) growth process and may include post-growth treatment. Type IIa
Symmetry	EXCELLENT		
Fluorescence	NONE		
Inscription(s)	LABGROWN IGI LG487199093		