



# INTERNATIONAL GEMOLOGICAL INSTITUTE

## LABORATORY GROWN DIAMOND REPORT

### IGI LABORATORY GROWN DIAMOND IDENTIFICATION REPORT

08/11/2021  
 IGI Report Number LG488132305  
 Shape and Cutting Style ROUND BRILLIANT  
 Measurements 5.41 - 5.45 X 3.33 MM

### GRADING RESULTS

Carat Weight 0.60 CARAT  
 Color Grade D  
 Clarity Grade VS 2  
 Cut Grade IDEAL

### ADDITIONAL GRADING INFORMATION

Polish EXCELLENT  
 Symmetry EXCELLENT  
 Fluorescence NONE  
 Inscription(s) LABGROWN IGI LG488132305

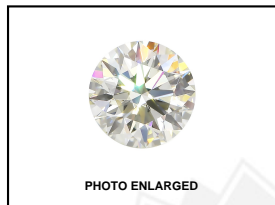
Comments: HEARTS & ARROWS  
 As Grown - No indication of post-growth treatment.  
 This Laboratory Grown Diamond was created by High Pressure High Temperature (HPHT) growth process.  
 Type II

This Laboratory Grown Diamond (LGD) described in this Report has been analyzed, graded and Laserscribed® by International Gemological Institute (IGI). A LGD has essentially the chemical, physical and optical properties as a mined diamond, with the exception of being man-made (a manufactured product). LGDs are typically produced by CVD (chemical vapor deposition) or by HPHT (high pressure high temperature) growth processes and may include post growth modifications to change the color. IGI utilizes the most advanced techniques and equipment currently available including, binocular microscopes, diamond color masters, non-contact-optical measuring device, a wide range analytical techniques including FTIR, UV-VIS-NIR, raman spectroscopy, and fluorescence analysis at various excitation wavelengths. This Report includes advanced security features. This Report is neither a guarantee, valuation nor appraisal and by making the report IGI does not agree to purchase or replace the article.

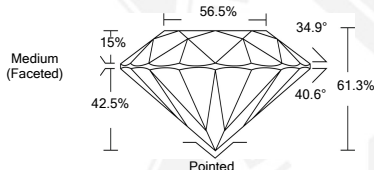
INTERNATIONAL GEMOLOGICAL INSTITUTE, INC

## ELECTRONIC COPY LABORATORY GROWN DIAMOND REPORT

LG488132305



LASERSCRIBE SM



THIS DOCUMENT WAS PRODUCED WITH THE FOLLOWING SECURITY MEASURES: SPECIAL DOCUMENT PAPER, INK SCREENS, WATERMARK BACKGROUND DESIGN, HOLOGRAM AND OTHER SECURITY FEATURES NOT LISTED AND DO EXCEED DOCUMENT SECURITY INDUSTRY GUIDELINES.

For Terms & Conditions and to verify this report, please visit [www.igi.org](http://www.igi.org)

### IGI LABORATORY GROWN DIAMOND ID REPORT

08/11/2021  
 IGI Report Number LG488132305  
 ROUND BRILLIANT  
 5.41 - 5.45 X 3.33 MM  
 Carat Weight 0.60 CARAT  
 Color Grade D  
 Clarity Grade VS 2  
 Cut Grade IDEAL  
 Polish EXCELLENT  
 Symmetry EXCELLENT  
 Fluorescence NONE  
 Inscription(s) LABGROWN IGI LG488132305

Comments: HEARTS & ARROWS  
 As Grown - No indication of post-growth treatment.  
 This Laboratory Grown Diamond was created by High Pressure High Temperature (HPHT) growth process.  
 Type II

### IGI LABORATORY GROWN DIAMOND ID REPORT

08/11/2021  
 IGI Report Number LG488132305  
 ROUND BRILLIANT  
 5.41 - 5.45 X 3.33 MM  
 Carat Weight 0.60 CARAT  
 Color Grade D  
 Clarity Grade VS 2  
 Cut Grade IDEAL  
 Polish EXCELLENT  
 Symmetry EXCELLENT  
 Fluorescence NONE  
 Inscription(s) LABGROWN IGI LG488132305

Comments: HEARTS & ARROWS  
 As Grown - No indication of post-growth treatment.  
 This Laboratory Grown Diamond was created by High Pressure High Temperature (HPHT) growth process.  
 Type II