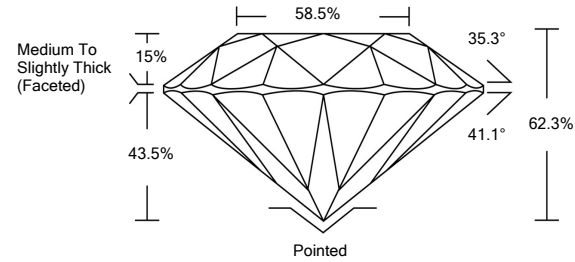




LABORATORY GROWN DIAMOND REPORT

LG488142828

PROPORTIONS



GRADING SCALES

COLOR GRADING SCALE	CL COLORLESS D-F	NC NEAR COLORLESS G-J	FT FAINT K-M	VL VERY LIGHT N-R	LT LIGHT S-Z	
CLARITY (10x) GRADING SCALE	FL FLAWLESS INTERNALLY FLAWLESS	IF INTERNAL FLAWLESS	VVS VERY VERY SLIGHTLY INCLUDED	VS VERY SLIGHTLY INCLUDED	SI SLIGHTLY INCLUDED	I INCLUDED

The laboratory grown diamond described in this Report (Report) has been graded, tested, analyzed, examined and/or inscribed by International Gemological Institute (IGI). A laboratory grown diamond is one that has essentially the same chemical, physical and optical properties as a mined diamond, with the exception of being grown by man (a manufactured product). IGI employs and utilizes those techniques and equipment currently available to IGI, including, without limitation, 10X magnification, corrected triplet loupe, binocular microscope, master color comparison stones, non-contact-optical measuring device, Diamond Sure™, Diamond View™, Spectrophotometer and such other instruments and/or processes as deemed appropriate by IGI. This Report includes advanced security features. A duly accredited gemologist or jeweler can advise you with respect to the importance of and interrelationship between cut, color, clarity and carat weight.

THIS REPORT IS NEITHER A GUARANTEE, VALUATION, NOR APPRAISAL OF THE GEMSTONE DESCRIBED HEREIN. PLEASE REVIEW THE LIMITATIONS AND RESTRICTIONS SET FORTH ONLINE. FOR ADDITIONAL INFORMATION, IMPORTANT LIMITATIONS AND DISCLAIMERS, PLEASE GO TO WWW.IGI.ORG OR CALL 1-888-BUY-IGIS.

© INTERNATIONAL GEMOLOGICAL INSTITUTE, INC.

08/09/2021

IGI Report Number **LG488142828**

Shape and Cutting Style **ROUND BRILLIANT**

Measurements **6.58 - 6.64 x 4.12 mm**

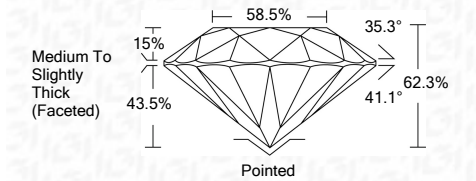
GRADING RESULTS

Carat Weight **1.11 CARAT**

Color Grade **D**

Clarity Grade **VVS 2**

Cut Grade **IDEAL**



ADDITIONAL GRADING INFORMATION

Polish **EXCELLENT**

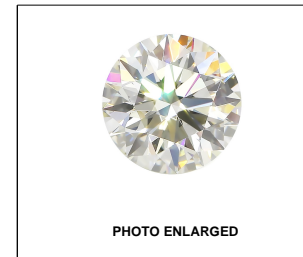
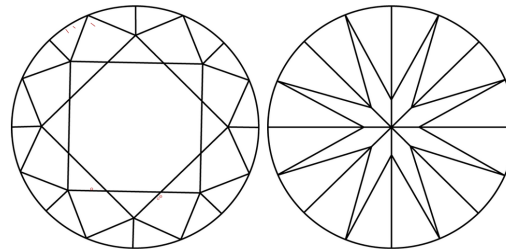
Symmetry **EXCELLENT**

Fluorescence **NONE**

Inscription(s) **LABGROWN IGI LG488142828**

Comments: As Grown - No indication of post-growth treatment.
This Laboratory Grown Diamond was created by High Pressure High Temperature (HPHT) growth process.
Type II

CLARITY CHARACTERISTICS



LABGROWN IGI LG488142828

LASERSCRIBESM

KEY TO SYMBOLS

Red symbols indicate internal characteristics.
Green symbols indicate external characteristics.

08/09/2021

IGI Report Number **LG488142828**

Shape and Cutting Style **ROUND BRILLIANT**

Measurements **6.58 - 6.64 x 4.12 mm**

GRADING RESULTS

Carat Weight **1.11 CARAT**

Color Grade **D**

Clarity Grade **VVS 2**

Cut Grade **IDEAL**

ADDITIONAL GRADING INFORMATION

Polish **EXCELLENT**

Symmetry **EXCELLENT**

Fluorescence **NONE**

Inscription(s) **LABGROWN IGI LG488142828**

Comments: As Grown - No indication of post-growth treatment.

This Laboratory Grown Diamond was created by High Pressure High Temperature (HPHT) growth process.
Type II



IGI

IGI Report No. LG488142828	1.11 CARAT	D
ROUND BRILLIANT	VVS 2	IDEAL
6.58 - 6.64 x 4.12 mm	Depth	62.3%
Carat Weight	Table	58.5%
Color Grade	Clarity	Medium To Slightly Thick (Faceted)
Clarity Grade	Cut	Pointed
Cut Grade	Polish	EXCELLENT
Depth	Symmetry	EXCELLENT
Table	Fluorescence	NONE
Grade	Inscription(s)	LABGROWN IGI LG488142828
Culet	Comments:	As Grown - No indication of post-growth treatment.
Polish		This Laboratory Grown Diamond was created by High Pressure High Temperature (HPHT) growth process.
Symmetry		Type II
Fluorescence		
Inscription(s)		