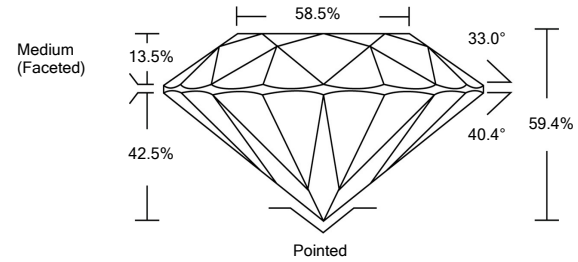




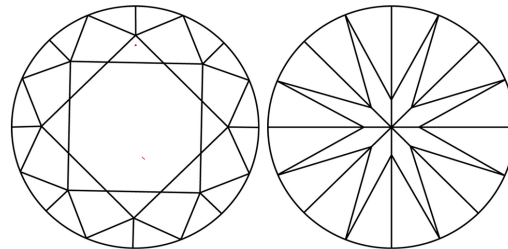
LG488154648

**LABORATORY GROWN DIAMOND REPORT**

**PROPORTIONS**



**CLARITY CHARACTERISTICS**



**KEY TO SYMBOLS**

Red symbols indicate internal characteristics.  
Green symbols indicate external characteristics.

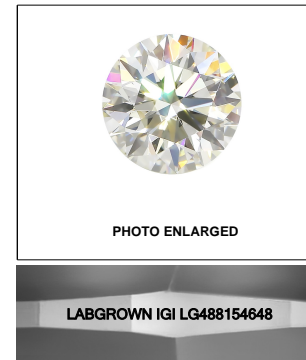
**GRADING SCALES**

COLOR GRADING SCALE	CL	NC	FT	VL	LT	
COLORLESS D-F		NEAR COLORLESS G-J	FAINT K-M	VERY LIGHT N-R	LIGHT S-Z	
CLARITY (10x) GRADING SCALE	FL	IF	VVS	VS	SI	I
FLAWLESS INTERNALLY FLAWLESS		VERY VERY SLIGHTLY INCLUDED	VERY SLIGHTLY INCLUDED	SLIGHTLY INCLUDED	INCLUDED	

The laboratory grown diamond described in this Report (Report) has been graded, tested, analyzed, examined and/or inscribed by International Gemological Institute (IGI). A laboratory grown diamond is one that has essentially the same chemical, physical and optical properties as a mined diamond, with the exception of being grown by man (a manufactured product). IGI employs and utilizes those techniques and equipment currently available to IGI, including, without limitation, 10X magnification, corrected triplet loupe, binocular microscope, master color comparison stones, non-contact-optical measuring device, Diamond Sure™, Diamond View™, Spectrophotometer and such other instruments and/or processes as deemed appropriate by IGI. This Report includes advanced security features. A duly accredited gemologist or jeweler can advise you with respect to the importance of and interrelationship between cut, color, clarity and carat weight.

**THIS REPORT IS NEITHER A GUARANTEE, VALUATION, NOR APPRAISAL OF THE GEMSTONE DESCRIBED HEREIN. PLEASE REVIEW THE LIMITATIONS AND RESTRICTIONS SET FORTH ONLINE. FOR ADDITIONAL INFORMATION, IMPORTANT LIMITATIONS AND DISCLAIMERS, PLEASE GO TO WWW.IGI.ORG OR CALL 1-888-BUY-IGIS.**

© INTERNATIONAL GEMOLOGICAL INSTITUTE, INC.



**LASERSCRIBE<sup>SM</sup>**

08/14/2021

IGI Report Number **LG488154648**

Shape and Cutting Style **ROUND BRILLIANT**

Measurements **7.32 - 7.35 x 4.36 mm**

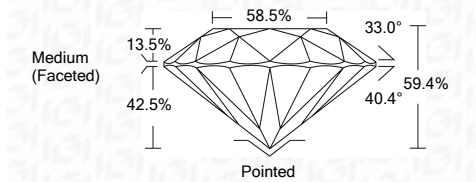
**GRADING RESULTS**

Carat Weight **1.43 CARAT**

Color Grade **I**

Clarity Grade **VVS 2**

Cut Grade **IDEAL**



**ADDITIONAL GRADING INFORMATION**

Polish **EXCELLENT**

Symmetry **EXCELLENT**

Fluorescence **NONE**

Inscription(s) **LABGROWN IGI LG488154648**

Comments: This Laboratory Grown Diamond was created by Chemical Vapor Deposition (CVD) growth process and may include post-growth treatment.  
Type IIa



**IGI**

08/14/2021	IGI Report No. LG488154648	1.43 CARAT	I	Pointed
IGI Report No. LG488154648	ROUND BRILLIANT	VVS 2	EXCELLENT	EXCELLENT
7.32 - 7.35 x 4.36 mm	Carat Weight	IDEAL	EXCELLENT	EXCELLENT
1.43 CARAT	Color Grade	58.5%	58.5%	58.5%
VVS 2	Clarity Grade	Medium (Faceted)	Pointed	EXCELLENT
IDEAL	Cut Grade	EXCELLENT	EXCELLENT	EXCELLENT
58.5%	Depth	NONE	NONE	NONE
58.5%	Table	LABGROWN IGI	LABGROWN IGI	LABGROWN IGI
Medium (Faceted)	Grade	LG488154648	LG488154648	LG488154648
Pointed	Culet	None	None	None
EXCELLENT	Polish	None	None	None
EXCELLENT	Symmetry	None	None	None
EXCELLENT	Fluorescence	None	None	None
NONE	Inscription(s)	None	None	None
LABGROWN IGI	Comments:	None	None	None
LG488154648	This Laboratory Grown Diamond was created by Chemical Vapor Deposition (CVD) growth process and may include post-growth treatment.	None	None	None
None	Type IIa	None	None	None