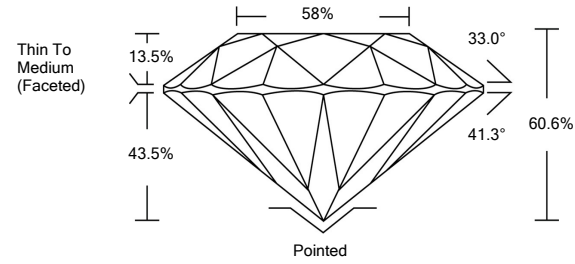




LG488156535

LABORATORY GROWN DIAMOND REPORT

PROPORTIONS



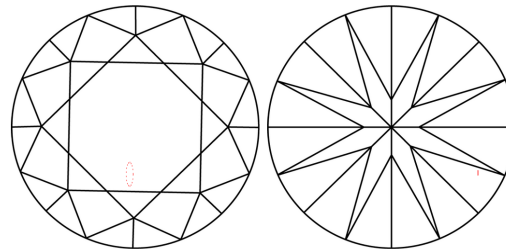
GRADING SCALES

Table with 5 columns for Color Grading Scale (CL, NC, FT, VLT, LT) and Clarity (10x) Grading Scale (FL, IF, VVS, VS, SI, I). Includes sub-labels like COLORLESS D-F, NEAR COLORLESS G-J, FAINT K-M, VERY LIGHT N-R, LIGHT S-Z, etc.

The laboratory grown diamond described in this Report (Report) has been graded, tested, analyzed, examined and/or inscribed by International Gemological Institute (IGI). A laboratory grown diamond is one that has essentially the same chemical, physical and optical properties as a mined diamond...

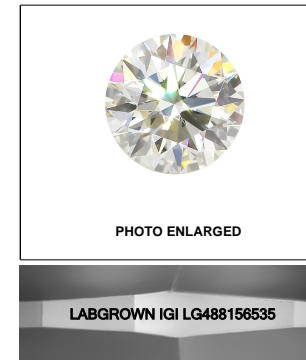
© INTERNATIONAL GEMOLOGICAL INSTITUTE, INC.

CLARITY CHARACTERISTICS



KEY TO SYMBOLS

Red symbols indicate internal characteristics. Green symbols indicate external characteristics.



LASERSCRIBESM

08/16/2021

IGI Report Number LG488156535

Shape and Cutting Style ROUND BRILLIANT

Measurements 7.43 - 7.47 x 4.51 mm

GRADING RESULTS

Carat Weight 1.51 CARAT

Color Grade J

Clarity Grade VS 2

Cut Grade IDEAL

ADDITIONAL GRADING INFORMATION

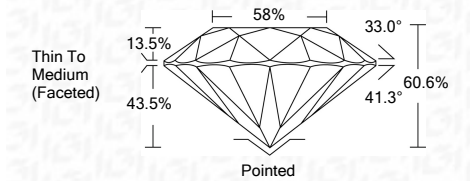
Polish EXCELLENT

Symmetry EXCELLENT

Fluorescence NONE

Inscription(s) LABGROWN IGI LG488156535

Comments: This Laboratory Grown Diamond was created by Chemical Vapor Deposition (CVD) growth process and may include post-growth treatment. Type IIa



IGI

Summary table with columns: IGI Report No., Shape and Cutting Style, Carat Weight, Color Grade, Clarity Grade, Depth, Table, Girdle, Thin To Medium (Faceted), Pointed, Polish, Symmetry, Fluorescence, Inscription(s), and Comments.

