



ELECTRONIC COPY

LABORATORY GROWN DIAMOND REPORT

LABORATORY GROWN DIAMOND REPORT

LABORATORY GROWN DIAMOND REPORT

August 18, 2021	
IGI Report Number	LG488157851
Description	LABORATORY GROWN DIAMOND
Shape and Cutting Style	ROUND BRILLIANT
Measurements	9.86 - 9.93 X 6.15 MM

GRADING RESULTS

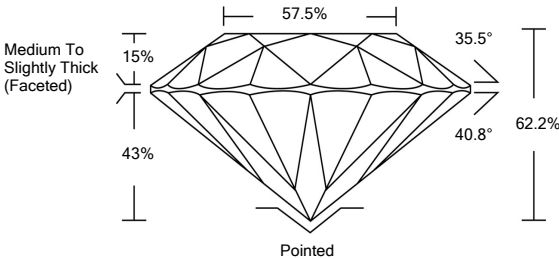
Carat Weight	3.75 CARATS
Color Grade	G
Clarity Grade	VVS 2
Cut Grade	IDEAL

ADDITIONAL GRADING INFORMATION

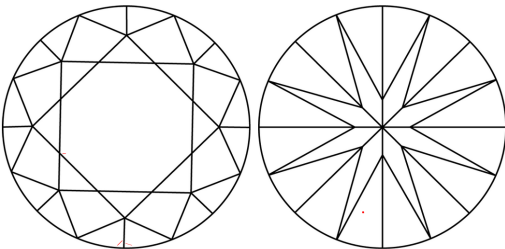
Polish	EXCELLENT
Symmetry	EXCELLENT
Fluorescence	NONE
Inscription(s)	LABGROWN IGI LG488157851

Comments: As Grown - No indication of post-growth treatment.
This Laboratory Grown Diamond was created by High Pressure High Temperature (HPHT) growth process.
Type II
Faint Blue

PROPORTIONS



CLARITY CHARACTERISTICS



KEY TO SYMBOLS

Red symbols indicate internal characteristics.
Green symbols indicate external characteristics.

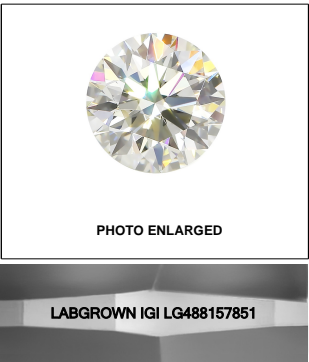
GRADING SCALES

COLOR GRADING SCALE	CL		NC		FT		VLT		LT	
	COLORLESS D-F		NEAR COLORLESS G-J		FAINT K-M		VERY LIGHT N-R		LIGHT S-Z	
CLARITY (10x) GRADING SCALE	FL	IF	VVS		VS		SI		I	
	FLAWLESS INTERNALLY FLAWLESS		VERY VERY SLIGHTLY INCLUDED		VERY SLIGHTLY INCLUDED		SLIGHTLY INCLUDED		INCLUDED	

The laboratory grown diamond described in this Report ("Report") has been graded, tested, analyzed, examined and/or inscribed by International Gemological Institute ("IGI"). A laboratory grown diamond is one that has essentially the same chemical, physical and optical properties as a natural diamond except it was created by a synthetic process (man-made or man-manufactured product). IGI employs and utilizes those techniques and equipment currently available to IGI, including, without limitation, 10X magnification, corrected light tube, binocular microscope, master color comparison stones, non-confocal infrared spectrometer, Raman spectroscopy, ultraviolet-visible fluorescence, and such other instruments and/or processes as deemed appropriate by IGI. This Report includes advanced security features. A duly accredited gemologist or jeweler can advise you with regard to the importance of and interrelationship between cut, color, clarity and carat weight.

THIS REPORT IS NEITHER A GUARANTEE, VALUATION, NOR APPRAISAL OF THE GEMSTONE DESCRIBED HEREIN. PLEASE REVIEW THE LIMITATIONS AND RESTRICTIONS SET FORTH ONLINE. FOR MORE INFORMATION ON OUR POLICIES, TERMS AND CONDITIONS, AND DISCLAIMERS, PLEASE GO TO WWW.IGI.ORG OR CALL 1-888-BUY-IGI.

© INTERNATIONAL GEMOLOGICAL INSTITUTE, INC.

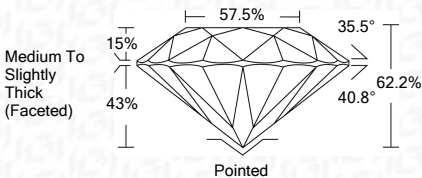
**LASERSCRIBESM**

© IGI 2020, International Gemological Institute

FD - 10 20

www.igi.org

August 18, 2021	
IGI Report Number	LG488157851
Description	LABORATORY GROWN DIAMOND
Shape and Cutting Style	ROUND BRILLIANT
Measurements	9.86 - 9.93 X 6.15 MM
GRADING RESULTS	
Carat Weight	3.75 CARATST
Color Grade	G
Clarity Grade	VVS 2
Cut Grade	IDEAL



ADDITIONAL GRADING INFORMATION

Polish	EXCELLENT
Symmetry	EXCELLENT
Fluorescence	NONE
Inscription(s)	LABGROWN IGI LG488157851

Comments: AS Grown - No indication of post-growth treatment.
This Laboratory Grown Diamond was created by High Pressure High Temperature (HPHT) growth process.
Type II
Faint Blue



IGI

August 18, 2021	IGI Report No. LG488157851		3.75 CARATS		G		VS 2		WS 2					
	ROUND BRILLIANT		8.98 - 9.93 X 6.15 MM		Color Grade		Ideal		Ideal					
Carat Weight			Cut Grade			Depth			82.2%					
Table			Polish			Girdle			57.5%					
Symmetry			Fluorescence			Medium To Slightly Thick (peached)			Pointed					
Inscription(s)			Comments:			EXCELLENT			EXCELLENT					
As Grown - No indication of post-growth treatment.			None			NONE			NONE					
This Laboratory Grown Diamond was created by High Pressure High Temperature (HPHT) growth process.			LAB GROWN IGI			LG488157851			LG488157851					
Faint Blue			Faint Blue			Faint Blue			Faint Blue					