



LABORATORY GROWN DIAMOND REPORT

LG490174894

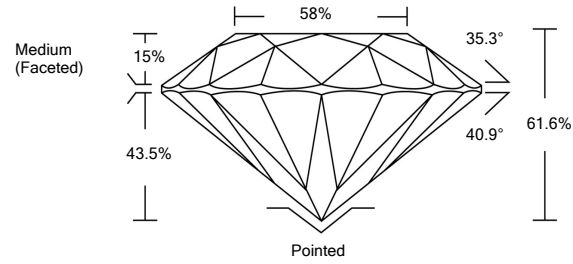
GRADING SCALES

Table with 5 columns for Color Grading Scale (CL, NC, FT, VLT, LT) and Clarity (10x) Grading Scale (FL, IF, VVS, VS, SI, I) with corresponding descriptions.

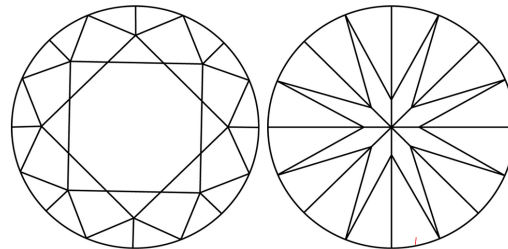
The laboratory grown diamond described in this Report (Report) has been graded, tested, analyzed, examined and/or inscribed by International Gemological Institute (IGI). A laboratory grown diamond is one that has essentially the same chemical, physical and optical properties as a mined diamond...

© INTERNATIONAL GEMOLOGICAL INSTITUTE, INC.

PROPORTIONS

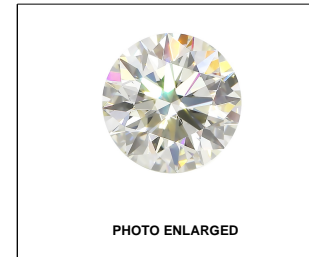


CLARITY CHARACTERISTICS



KEY TO SYMBOLS

Red symbols indicate internal characteristics. Green symbols indicate external characteristics.



LABGROWN IGI LG490174894

LASERSCRIBE<sup>SM</sup>

08/16/2021

IGI Report Number LG490174894

Shape and Cutting Style ROUND BRILLIANT

Measurements 7.67 - 7.71 x 4.74 mm

GRADING RESULTS

Carat Weight 1.72 CARAT

Color Grade H

Clarity Grade VS 1

Cut Grade IDEAL

ADDITIONAL GRADING INFORMATION

Polish EXCELLENT

Symmetry EXCELLENT

Fluorescence NONE

Inscription(s) LABGROWN IGI LG490174894

Comments: This Laboratory Grown Diamond was created by Chemical Vapor Deposition (CVD) growth process and may include post-growth treatment. Type IIa

Summary table of diamond details: IGI Report No. LG490174894, ROUND BRILLIANT, 7.67 - 7.71 x 4.74 mm, 1.72 CARAT, VS 1, IDEAL, 61.6%, 58%, Medium (Faceted), Polished EXCELLENT, Symmetry EXCELLENT, Fluorescence NONE, Inscription(s) LABGROWN IGI LG490174894.

