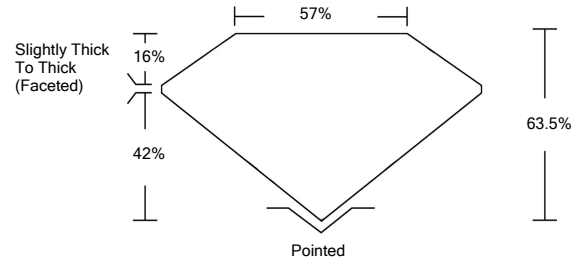




LG490175030

LABORATORY GROWN DIAMOND REPORT

PROPORTIONS

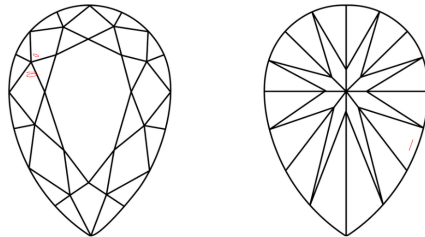


GRADING SCALES

Table with 5 columns for Color Grading Scale (CL to LT) and Clarity (10x) Grading Scale (FL to I).

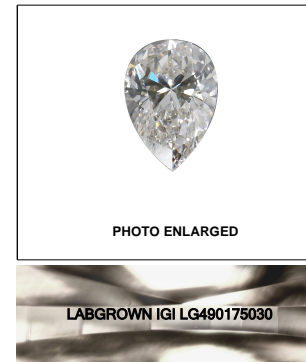
The laboratory grown diamond described in this Report (Report) has been graded, tested, analyzed, examined and/or inscribed by International Gemological Institute (IGI). A laboratory grown diamond is one that has essentially the same chemical, physical and optical properties as a mined diamond...

CLARITY CHARACTERISTICS



KEY TO SYMBOLS

Red symbols indicate internal characteristics. Green symbols indicate external characteristics.



08/16/2021

IGI Report Number LG490175030

Shape and Cutting Style PEAR BRILLIANT

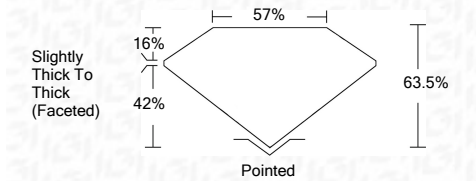
Measurements 10.09 x 6.22 x 3.95 mm

GRADING RESULTS

Carat Weight 1.51 CARAT

Color Grade G

Clarity Grade SI 1



ADDITIONAL GRADING INFORMATION

Polish EXCELLENT

Symmetry EXCELLENT

Fluorescence NONE

Inscription(s) LABGROWN IGI LG490175030

Comments: As Grown - No indication of post-growth treatment. This Laboratory Grown Diamond was created by High Pressure High Temperature (HPHT) growth process. Type II



08/16/2021 IGI Report No. LG490175030 PEAR BRILLIANT 10.09 x 6.22 x 3.95 mm 1.51 CARAT G SI 1 63.5% 57% Slightly Thick To Thick (Faceted) Pointed EXCELLENT EXCELLENT NONE LABGROWN IGI LG490175030

