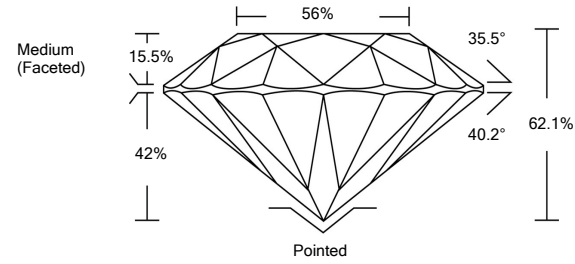




LG490175162

LABORATORY GROWN DIAMOND REPORT

PROPORTIONS



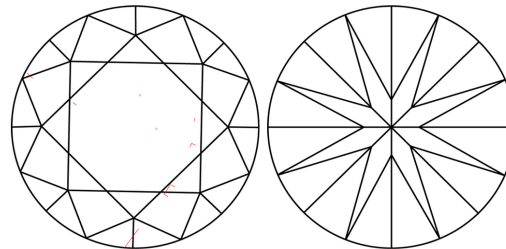
GRADING SCALES

Table with 5 columns: CL, NC, FT, VLT, LT and 2 rows: COLOR GRADING SCALE, CLARITY (10x) GRADING SCALE

The laboratory grown diamond described in this Report (Report) has been graded, tested, analyzed, examined and/or inscribed by International Gemological Institute (IGI). A laboratory grown diamond is one that has essentially the same chemical, physical and optical properties as a mined diamond...

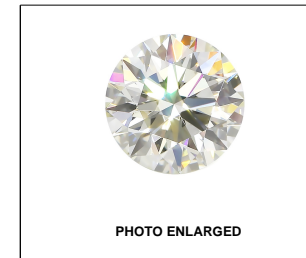
© INTERNATIONAL GEMOLOGICAL INSTITUTE, INC.

CLARITY CHARACTERISTICS



KEY TO SYMBOLS

Red symbols indicate internal characteristics. Green symbols indicate external characteristics.



LABGROWN IGI LG490175162

LASERSCRIBESM

08/18/2021

IGI Report Number LG490175162

Shape and Cutting Style ROUND BRILLIANT

Measurements 8.90 - 8.94 x 5.54 mm

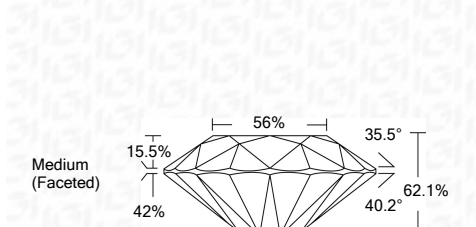
GRADING RESULTS

Carat Weight 2.75 CARATS

Color Grade J

Clarity Grade VS 2

Cut Grade IDEAL



ADDITIONAL GRADING INFORMATION

Polish EXCELLENT

Symmetry EXCELLENT

Fluorescence NONE

Inscription(s) LABGROWN IGI LG490175162

Comments: This Laboratory Grown Diamond was created by Chemical Vapor Deposition (CVD) growth process and may include post-growth treatment. Type IIa



IGI

Summary table with columns: IGI Report No., Shape and Cutting Style, Carat Weight, Color Grade, Clarity Grade, Depth, Table, Girdle, Culet, Polish, Symmetry, Fluorescence, Inscription(s), Culet, Polish, Symmetry, Fluorescence, Inscription(s)

