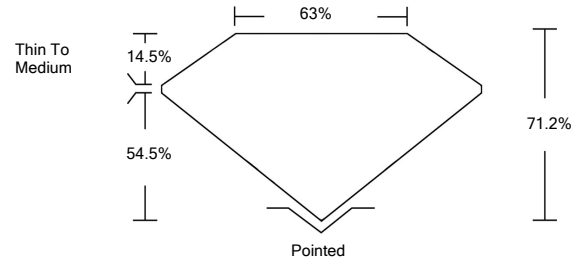




LG490175749

LABORATORY GROWN DIAMOND REPORT

PROPORTIONS

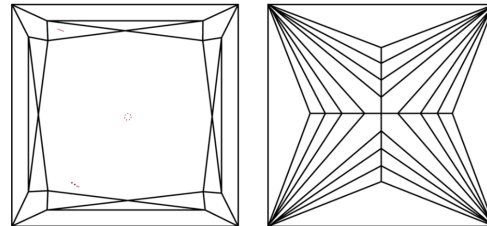


GRADING SCALES

Table with 5 columns for Color Grading Scale (CL, NC, FT, VLT, LT) and Clarity (10x) Grading Scale (FL, IF, VVS, VS, SI, I). Colorless D-F to Light S-Z, Flawless Internally Flawless to Included.

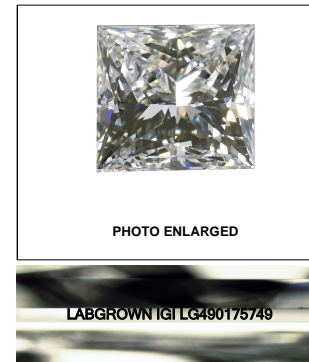
The laboratory grown diamond described in this Report (Report) has been graded, tested, analyzed, examined and/or inscribed by International Gemological Institute (IGI). A laboratory grown diamond is one that has essentially the same chemical, physical and optical properties as a mined diamond...

CLARITY CHARACTERISTICS

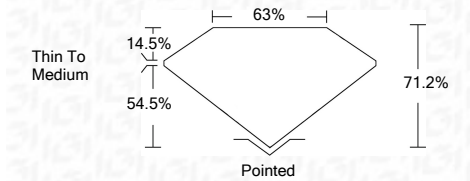


KEY TO SYMBOLS

Red symbols indicate internal characteristics. Green symbols indicate external characteristics.



08/18/2021 IGI Report Number LG490175749 Shape and Cutting Style PRINCESS CUT Measurements 6.28 x 6.19 x 4.41 mm GRADING RESULTS Carat Weight 1.50 CARAT Color Grade F Clarity Grade VVS 2



ADDITIONAL GRADING INFORMATION

Polish EXCELLENT Symmetry EXCELLENT Fluorescence NONE Inscription(s) LABGROWN IGI LG490175749

Comments: As Grown - No indication of post-growth treatment. This Laboratory Grown Diamond was created by High Pressure High Temperature (HPHT) growth process. Type II



08/18/2021 IGI Report No. LG490175749 PRINCESS CUT 6.28 x 6.19 x 4.41 mm 1.50 CARAT F VVS 2 71.2% 63% Thin To Medium Pointed EXCELLENT EXCELLENT NONE LABGROWN IGI LG490175749

As Grown - No indication of post-growth treatment. This Laboratory Grown Diamond was created by High Pressure High Temperature (HPHT) growth process. Type II

