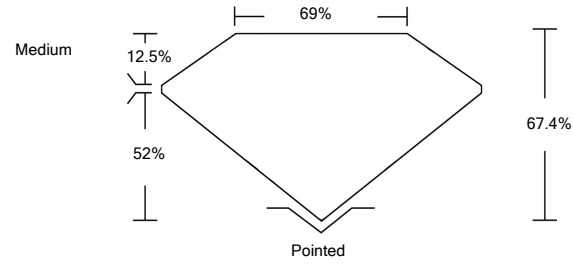




LG490177242

LABORATORY GROWN DIAMOND REPORT

PROPORTIONS



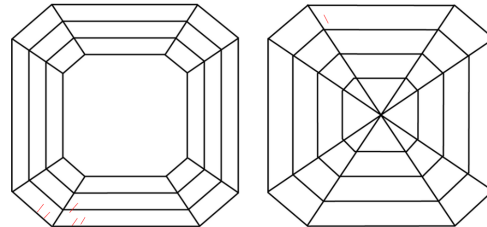
GRADING SCALES

Table with 5 columns for Color Grading Scale (CL to LT) and Clarity (10x) Grading Scale (FL to I).

The laboratory grown diamond described in this Report (Report) has been graded, tested, analyzed, examined and/or inscribed by International Gemological Institute (IGI). A laboratory grown diamond is one that has essentially the same chemical, physical and optical properties as a mined diamond...

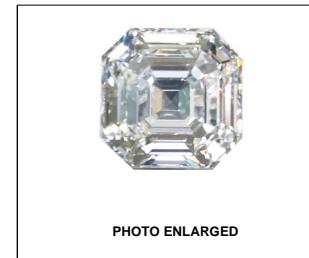
© INTERNATIONAL GEMOLOGICAL INSTITUTE, INC.

CLARITY CHARACTERISTICS



KEY TO SYMBOLS

Red symbols indicate internal characteristics. Green symbols indicate external characteristics.



LABGROWN IGI LG490177242

LASERSCRIBESM

08/24/2021

IGI Report Number LG490177242

Shape and Cutting Style SQUARE EMERALD CUT

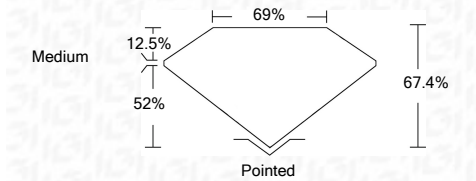
Measurements 6.56 x 6.23 x 4.20 mm

GRADING RESULTS

Carat Weight 1.52 CARAT

Color Grade G

Clarity Grade VS 1



ADDITIONAL GRADING INFORMATION

Polish EXCELLENT

Symmetry VERY GOOD

Fluorescence NONE

Inscription(s) LABGROWN IGI LG490177242

Comments: Faint Blue As Grown - No indication of post-growth treatment. This Laboratory Grown Diamond was created by High Pressure High Temperature (HPHT) growth process. Type II



IGI

Summary table of diamond characteristics: 08/24/2021, IGI Report No. LG490177242, SQUARE EMERALD CUT, 6.56 x 6.23 x 4.20 mm, 1.52 CARAT, G, VS 1, 67.4%, 69%, Medium, Pointed, EXCELLENT, VERY GOOD, NONE, LABGROWN IGI LG490177242.

