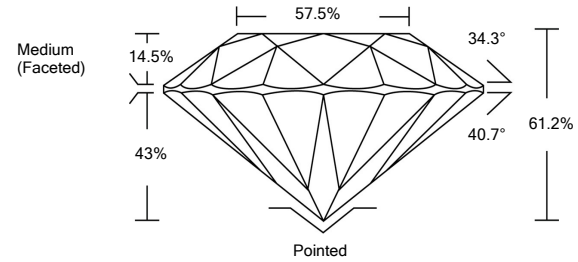




LABORATORY GROWN DIAMOND REPORT

LG490190986

PROPORTIONS



GRADING SCALES

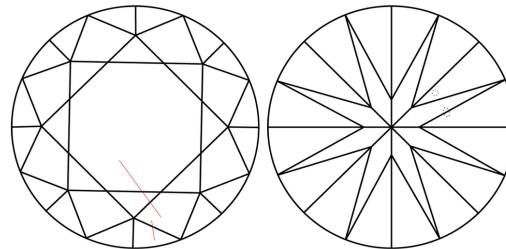
COLOR GRADING SCALE	CL	NC	FT	VL	LT	
	COLORLESS D-F	NEAR COLORLESS G-J	FAINT K-M	VERY LIGHT N-R	LIGHT S-Z	
CLARITY (10x) GRADING SCALE	FL	IF	VVS	VS	SI	I
	FLAWLESS INTERNALLY FLAWLESS	VERY VERY SLIGHTLY INCLUDED	VERY SLIGHTLY INCLUDED	SLIGHTLY INCLUDED	INCLUDED	

The laboratory grown diamond described in this Report (Report) has been graded, tested, analyzed, examined and/or inscribed by International Gemological Institute (IGI). A laboratory grown diamond is one that has essentially the same chemical, physical and optical properties as a mined diamond, with the exception of being grown by man (a manufactured product). IGI employs and utilizes those techniques and equipment currently available to IGI, including, without limitation, 10X magnification, corrected triplet loupe, binocular microscope, master color comparison stones, non-contact-optical measuring device, Diamond Sure™, Diamond View™, Spectrophotometer and such other instruments and/or processes as deemed appropriate by IGI. This Report includes advanced security features. A duly accredited gemologist or jeweler can advise you with respect to the importance of and interrelationship between cut, color, clarity and carat weight.

THIS REPORT IS NEITHER A GUARANTEE, VALUATION, NOR APPRAISAL OF THE GEMSTONE DESCRIBED HEREIN. PLEASE REVIEW THE LIMITATIONS AND RESTRICTIONS SET FORTH ONLINE. FOR ADDITIONAL INFORMATION, IMPORTANT LIMITATIONS AND DISCLAIMERS, PLEASE GO TO WWW.IGI.ORG OR CALL 1-888-BUY-IGIS.

© INTERNATIONAL GEMOLOGICAL INSTITUTE, INC.

CLARITY CHARACTERISTICS



KEY TO SYMBOLS

Red symbols indicate internal characteristics.
Green symbols indicate external characteristics.

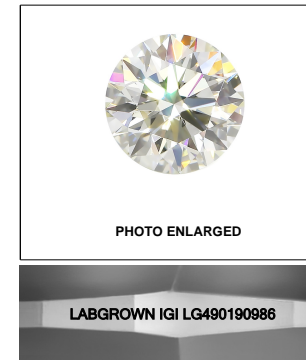


PHOTO ENLARGED

LABGROWN IGI LG490190986

LASERSCRIBESM

08/26/2021

IGI Report Number **LG490190986**

Shape and Cutting Style **ROUND BRILLIANT**

Measurements **8.11 - 8.15 x 4.97 mm**

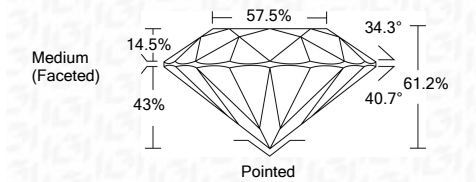
GRADING RESULTS

Carat Weight **2.01 CARATS**

Color Grade **J**

Clarity Grade **SI 2**

Cut Grade **IDEAL**



ADDITIONAL GRADING INFORMATION

Polish **EXCELLENT**

Symmetry **EXCELLENT**

Fluorescence **NONE**

Inscription(s) **LABGROWN IGI LG490190986**

Comments: This Laboratory Grown Diamond was created by Chemical Vapor Deposition (CVD) growth process and may include post-growth treatment.
Type IIa



IGI

08/26/2021	IGI Report No. LG490190986	2.01 CARATS	J	Pointed	EXCELLENT	EXCELLENT	NONE	LABGROWN IGI LG490190986
08/26/2021	ROUND BRILLIANT	8.11 - 8.15 x 4.97 mm	SI 2	IDEAL	EXCELLENT	EXCELLENT	NONE	LABGROWN IGI LG490190986
	Carat Weight	2.01 CARATS	SI 2	IDEAL	EXCELLENT	EXCELLENT	NONE	LABGROWN IGI LG490190986
	Color Grade	J	SI 2	IDEAL	EXCELLENT	EXCELLENT	NONE	LABGROWN IGI LG490190986
	Clarity Grade	SI 2	SI 2	IDEAL	EXCELLENT	EXCELLENT	NONE	LABGROWN IGI LG490190986
	Cut Grade	IDEAL	SI 2	IDEAL	EXCELLENT	EXCELLENT	NONE	LABGROWN IGI LG490190986
	Depth	43%	SI 2	IDEAL	EXCELLENT	EXCELLENT	NONE	LABGROWN IGI LG490190986
	Table	14.5%	SI 2	IDEAL	EXCELLENT	EXCELLENT	NONE	LABGROWN IGI LG490190986
	Grade	57.5%	SI 2	IDEAL	EXCELLENT	EXCELLENT	NONE	LABGROWN IGI LG490190986
	Culet	Pointed	SI 2	IDEAL	EXCELLENT	EXCELLENT	NONE	LABGROWN IGI LG490190986
	Polish	EXCELLENT	SI 2	IDEAL	EXCELLENT	EXCELLENT	NONE	LABGROWN IGI LG490190986
	Symmetry	EXCELLENT	SI 2	IDEAL	EXCELLENT	EXCELLENT	NONE	LABGROWN IGI LG490190986
	Fluorescence	NONE	SI 2	IDEAL	EXCELLENT	EXCELLENT	NONE	LABGROWN IGI LG490190986
	Inscription(s)	LABGROWN IGI LG490190986	SI 2	IDEAL	EXCELLENT	EXCELLENT	NONE	LABGROWN IGI LG490190986
	Comments:	This Laboratory Grown Diamond was created by Chemical Vapor Deposition (CVD) growth process and may include post-growth treatment. Type IIa	SI 2	IDEAL	EXCELLENT	EXCELLENT	NONE	LABGROWN IGI LG490190986

