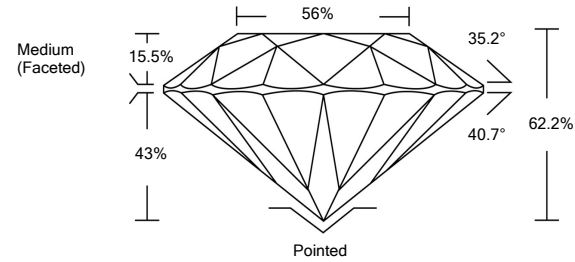




LABORATORY GROWN DIAMOND REPORT

LG490191046

PROPORTIONS



GRADING SCALES

COLOR GRADING SCALE	CL COLORLESS D-F	NC NEAR COLORLESS G-J	FT FAINT K-M	VL VERY LIGHT N-R	LT LIGHT S-Z	
CLARITY (10x) GRADING SCALE	FL FLAWLESS INTERNALLY FLAWLESS	IF INTERNAL FLAWLESS	VVS VERY VERY SLIGHTLY INCLUDED	VS VERY SLIGHTLY INCLUDED	SI SLIGHTLY INCLUDED	I INCLUDED

The laboratory grown diamond described in this Report (Report) has been graded, tested, analyzed, examined and/or inscribed by International Gemological Institute (IGI). A laboratory grown diamond is one that has essentially the same chemical, physical and optical properties as a mined diamond, with the exception of being grown by man (a manufactured product). IGI employs and utilizes those techniques and equipment currently available to IGI, including, without limitation, 10X magnification, corrected triplet loupe, binocular microscope, master color comparison stones, non-contact-optical measuring device, Diamond Sure™, Diamond View™, Spectrophotometer and such other instruments and/or processes as deemed appropriate by IGI. This Report includes advanced security features. A duly accredited gemologist or jeweler can advise you with respect to the importance of and interrelationship between cut, color, clarity and carat weight.

THIS REPORT IS NEITHER A GUARANTEE, VALUATION, NOR APPRAISAL OF THE GEMSTONE DESCRIBED HEREIN. PLEASE REVIEW THE LIMITATIONS AND RESTRICTIONS SET FORTH ONLINE. FOR ADDITIONAL INFORMATION, IMPORTANT LIMITATIONS AND DISCLAIMERS, PLEASE GO TO WWW.IGI.ORG OR CALL 1-888-BUY-IGIS.

© INTERNATIONAL GEMOLOGICAL INSTITUTE, INC.

08/23/2021

IGI Report Number **LG490191046**

Shape and Cutting Style **ROUND BRILLIANT**

Measurements **8.13 - 8.16 x 5.07 mm**

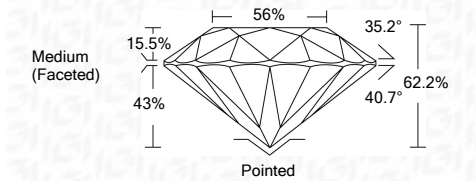
GRADING RESULTS

Carat Weight **2.06 CARATS**

Color Grade **J**

Clarity Grade **VS 1**

Cut Grade **IDEAL**



ADDITIONAL GRADING INFORMATION

Polish **EXCELLENT**

Symmetry **EXCELLENT**

Fluorescence **NONE**

Inscription(s) **LABGROWN IGI LG490191046**

Comments: This Laboratory Grown Diamond was created by Chemical Vapor Deposition (CVD) growth process and may include post-growth treatment.
Type IIa

08/23/2021

IGI Report Number **LG490191046**

Shape and Cutting Style **ROUND BRILLIANT**

Measurements **8.13 - 8.16 x 5.07 mm**

GRADING RESULTS

Carat Weight **2.06 CARATS**

Color Grade **J**

Clarity Grade **VS 1**

Cut Grade **IDEAL**

ADDITIONAL GRADING INFORMATION

Polish **EXCELLENT**

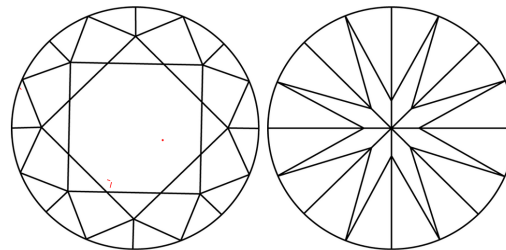
Symmetry **EXCELLENT**

Fluorescence **NONE**

Inscription(s) **LABGROWN IGI LG490191046**

Comments: This Laboratory Grown Diamond was created by Chemical Vapor Deposition (CVD) growth process and may include post-growth treatment.
Type IIa

CLARITY CHARACTERISTICS



KEY TO SYMBOLS

Red symbols indicate internal characteristics.
Green symbols indicate external characteristics.

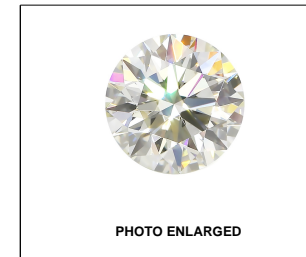


PHOTO ENLARGED



LASERSCRIBESM



08/23/2021	IGI Report No. LG490191046	2.06 CARATS	J	Pointed	EXCELLENT	EXCELLENT	NONE	LABGROWN IGI LG490191046	Comments: This Laboratory Grown Diamond was created by Chemical Vapor Deposition (CVD) growth process and may include post-growth treatment. Type IIa
IGI Report No. LG490191046	ROUND BRILLIANT	8.13 - 8.16 x 5.07 mm	VS 1	IDEAL	EXCELLENT	EXCELLENT	NONE	LABGROWN IGI LG490191046	
Carat Weight	8.13 - 8.16 x 5.07 mm	2.06 CARATS	VS 1	IDEAL	EXCELLENT	EXCELLENT	NONE	LABGROWN IGI LG490191046	
Color Grade	8.13 - 8.16 x 5.07 mm	2.06 CARATS	VS 1	IDEAL	EXCELLENT	EXCELLENT	NONE	LABGROWN IGI LG490191046	
Clarity Grade	8.13 - 8.16 x 5.07 mm	2.06 CARATS	VS 1	IDEAL	EXCELLENT	EXCELLENT	NONE	LABGROWN IGI LG490191046	
Cut Grade	8.13 - 8.16 x 5.07 mm	2.06 CARATS	VS 1	IDEAL	EXCELLENT	EXCELLENT	NONE	LABGROWN IGI LG490191046	
Depth	8.13 - 8.16 x 5.07 mm	2.06 CARATS	VS 1	IDEAL	EXCELLENT	EXCELLENT	NONE	LABGROWN IGI LG490191046	
Table	8.13 - 8.16 x 5.07 mm	2.06 CARATS	VS 1	IDEAL	EXCELLENT	EXCELLENT	NONE	LABGROWN IGI LG490191046	
Grille	8.13 - 8.16 x 5.07 mm	2.06 CARATS	VS 1	IDEAL	EXCELLENT	EXCELLENT	NONE	LABGROWN IGI LG490191046	
Culet	8.13 - 8.16 x 5.07 mm	2.06 CARATS	VS 1	IDEAL	EXCELLENT	EXCELLENT	NONE	LABGROWN IGI LG490191046	