



LABORATORY GROWN DIAMOND REPORT

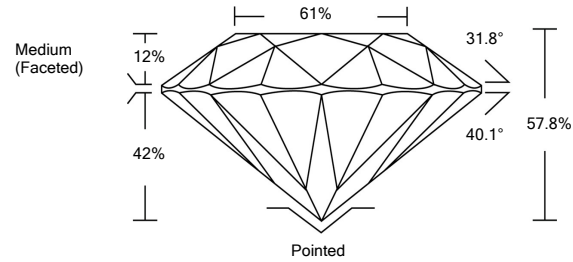
LG490191051

GRADING SCALES

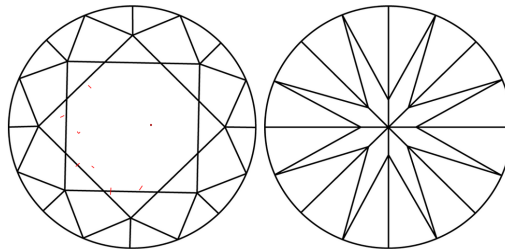
Table with 5 columns for Color Grading Scale (CL, NC, FT, VLT, LT) and Clarity (10x) Grading Scale (FL, IF, VVS, VS, SI, I).

The laboratory grown diamond described in this Report (Report) has been graded, tested, analyzed, examined and/or inscribed by International Gemological Institute (IGI). A laboratory grown diamond is one that has essentially the same chemical, physical and optical properties as a mined diamond...

PROPORTIONS

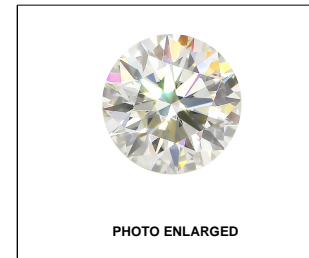


CLARITY CHARACTERISTICS



KEY TO SYMBOLS

Red symbols indicate internal characteristics. Green symbols indicate external characteristics.



LABGROWN IGI LG490191051

LASERSCRIBE<sup>SM</sup>

08/23/2021

IGI Report Number LG490191051

Shape and Cutting Style ROUND BRILLIANT

Measurements 8.64 - 8.67 x 5.00 mm

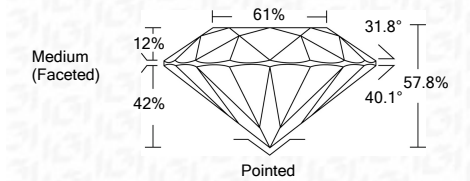
GRADING RESULTS

Carat Weight 2.30 CARATS

Color Grade I

Clarity Grade VS 1

Cut Grade EXCELLENT



ADDITIONAL GRADING INFORMATION

Polish EXCELLENT

Symmetry EXCELLENT

Fluorescence NONE

Inscription(s) LABGROWN IGI LG490191051

Comments: This Laboratory Grown Diamond was created by Chemical Vapor Deposition (CVD) growth process and may include post-growth treatment. Type IIa

08/23/2021 IGI Report Number LG490191051 Shape and Cutting Style ROUND BRILLIANT Measurements 8.64 - 8.67 x 5.00 mm

GRADING RESULTS Carat Weight 2.30 CARATS Color Grade I Clarity Grade VS 1 Cut Grade EXCELLENT

ADDITIONAL GRADING INFORMATION Polish EXCELLENT Symmetry EXCELLENT Fluorescence NONE Inscription(s) LABGROWN IGI LG490191051

Comments: This Laboratory Grown Diamond was created by Chemical Vapor Deposition (CVD) growth process and may include post-growth treatment. Type IIa



IGI

08/23/2021 IGI Report No. LG490191051 ROUND BRILLIANT 8.64 - 8.67 x 5.00 mm 2.30 CARATS I VS 1 EXCELLENT 57.8% 61% Medium (Faceted) Pointed EXCELLENT EXCELLENT NONE LABGROWN IGI LG490191051