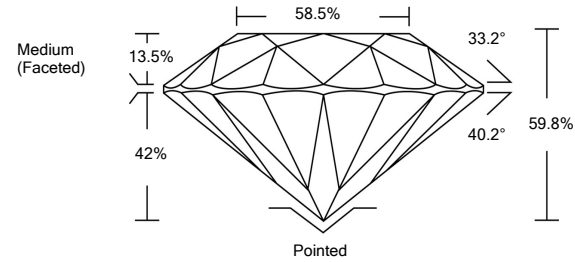




LG490191058

LABORATORY GROWN DIAMOND REPORT

PROPORTIONS

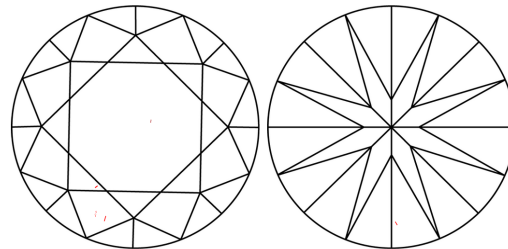


GRADING SCALES

Table with 5 columns for Color Grading Scale (CL to LT) and Clarity (10x) Grading Scale (FL to I). Includes descriptions like 'COLORLESS D-F', 'NEAR COLORLESS G-J', etc.

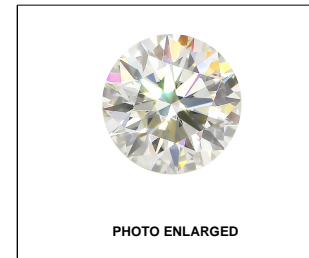
The laboratory grown diamond described in this Report (Report) has been graded, tested, analyzed, examined and/or inscribed by International Gemological Institute (IGI). A laboratory grown diamond is one that has essentially the same chemical, physical and optical properties as a mined diamond...

CLARITY CHARACTERISTICS



KEY TO SYMBOLS

Red symbols indicate internal characteristics. Green symbols indicate external characteristics.



LABGROWN IGI LG490191058

LASERSCRIBESM

08/23/2021

IGI Report Number LG490191058

Shape and Cutting Style ROUND BRILLIANT

Measurements 8.21 - 8.25 x 4.93 mm

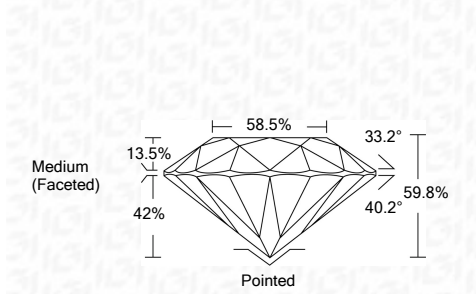
GRADING RESULTS

Carat Weight 2.06 CARATS

Color Grade I

Clarity Grade VS 1

Cut Grade IDEAL



ADDITIONAL GRADING INFORMATION

Polish EXCELLENT

Symmetry EXCELLENT

Fluorescence NONE

Inscription(s) LABGROWN IGI LG490191058

Comments: This Laboratory Grown Diamond was created by Chemical Vapor Deposition (CVD) growth process and may include post-growth treatment. Type IIa



IGI

Summary table of report details: 08/23/2021, IGI Report No. LG490191058, ROUND BRILLIANT, 8.21 - 8.25 x 4.93 mm, 2.06 CARATS, VS 1, IDEAL, 59.8%, 58.5%, Medium (Faceted), Polished, EXCELLENT, EXCELLENT, NONE, LABGROWN IGI LG490191058

