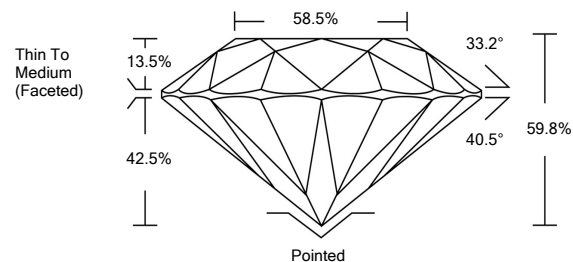




LG490193840

LABORATORY GROWN DIAMOND REPORT

PROPORTIONS

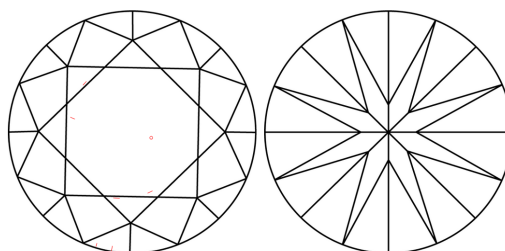


GRADING SCALES

Table with 5 columns for Color Grading Scale (CL to LT) and Clarity (10x) Grading Scale (FL to I). Includes descriptions like 'COLORLESS D-F', 'NEAR COLORLESS G-J', etc.

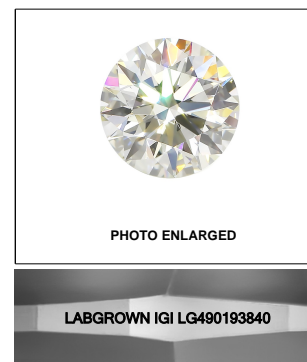
The laboratory grown diamond described in this Report (Report) has been graded, tested, analyzed, examined and/or inscribed by International Gemological Institute (IGI). A laboratory grown diamond is one that has essentially the same chemical, physical and optical properties as a mined diamond...

CLARITY CHARACTERISTICS



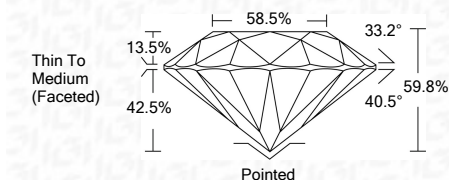
KEY TO SYMBOLS

Red symbols indicate internal characteristics. Green symbols indicate external characteristics.



LASERSCRIBESM

08/24/2021 IGI Report Number LG490193840 Shape and Cutting Style ROUND BRILLIANT Measurements 8.30 - 8.34 x 4.98 mm GRADING RESULTS Carat Weight 2.11 CARATS Color Grade H Clarity Grade VS 1 Cut Grade IDEAL



ADDITIONAL GRADING INFORMATION Polish EXCELLENT Symmetry EXCELLENT Fluorescence NONE Inscription(s) LABGROWN IGI LG490193840

Comments: This Laboratory Grown Diamond was created by Chemical Vapor Deposition (CVD) growth process and may include post-growth treatment. Type IIa



IGI

08/24/2021 IGI Report No. LG490193840 ROUND BRILLIANT 8.30 - 8.34 x 4.98 mm 2.11 CARATS H VS 1 IDEAL 89.8% 58.5% Thin To Medium (Faceted) Pointed EXCELLENT EXCELLENT NONE LABGROWN IGI LG490193840

