



LABORATORY GROWN DIAMOND REPORT

LG492110339

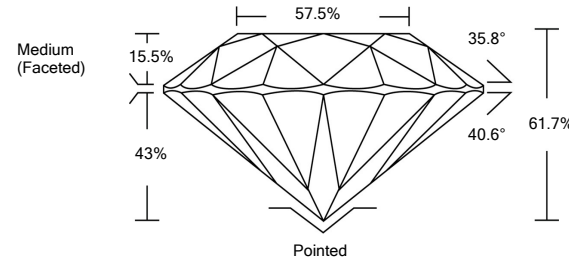
GRADING SCALES

Table with 5 columns for Color Grading Scale (CL, NC, FT, VLT, LT) and Clarity (10x) Grading Scale (FL, IF, VVS, VS, SI, I) with corresponding descriptions.

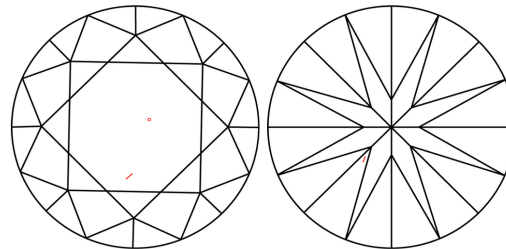
The laboratory grown diamond described in this Report (Report) has been graded, tested, analyzed, examined and/or inscribed by International Gemological Institute (IGI). A laboratory grown diamond is one that has essentially the same chemical, physical and optical properties as a mined diamond...

© INTERNATIONAL GEMOLOGICAL INSTITUTE, INC.

PROPORTIONS

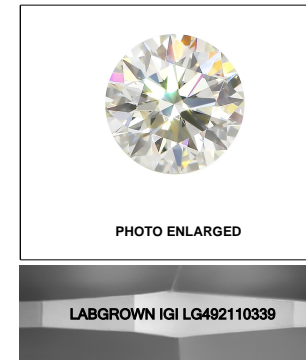


CLARITY CHARACTERISTICS



KEY TO SYMBOLS

Red symbols indicate internal characteristics. Green symbols indicate external characteristics.



LASERSCRIBE<sup>SM</sup>

08/25/2021

IGI Report Number LG492110339

Shape and Cutting Style ROUND BRILLIANT

Measurements 8.28 - 8.38 x 5.16 mm

GRADING RESULTS

Carat Weight 2.22 CARATS

Color Grade J

Clarity Grade VS 2

Cut Grade EXCELLENT

ADDITIONAL GRADING INFORMATION

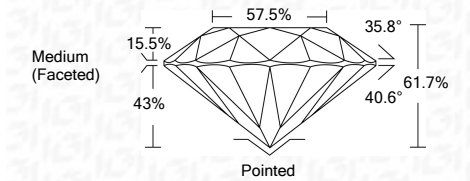
Polish EXCELLENT

Symmetry VERY GOOD

Fluorescence NONE

Inscription(s) LABGROWN IGI LG492110339

Comments: This Laboratory Grown Diamond was created by Chemical Vapor Deposition (CVD) growth process and may include post-growth treatment. Type IIa



IGI

Summary table of report details: IGI Report No. LG492110339, ROUND BRILLIANT, 8.28 - 8.38 x 5.16 mm, 2.22 CARATS, VS 2, EXCELLENT, 61.7%, 57.5%, Medium (Faceted), Pointed, EXCELLENT, VERY GOOD, NONE, LABGROWN IGI LG492110339.

