



LABORATORY GROWN DIAMOND REPORT

LG492111630

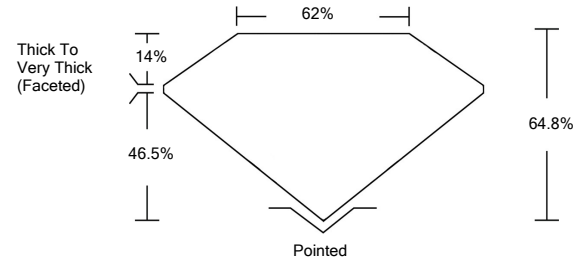
GRADING SCALES

Table with 5 columns for Color Grading Scale (CL, NC, FT, VLT, LT) and Clarity (10x) Grading Scale (FL, IF, VVS, VS, SI, I).

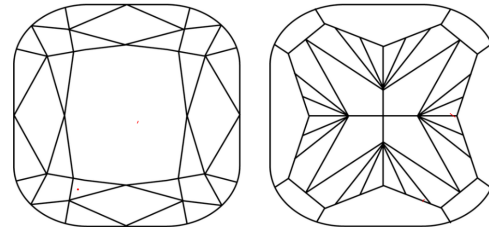
The laboratory grown diamond described in this Report (Report) has been graded, tested, analyzed, examined and/or inscribed by International Gemological Institute (IGI). A laboratory grown diamond is one that has essentially the same chemical, physical and optical properties as a mined diamond...

© INTERNATIONAL GEMOLOGICAL INSTITUTE, INC.

PROPORTIONS

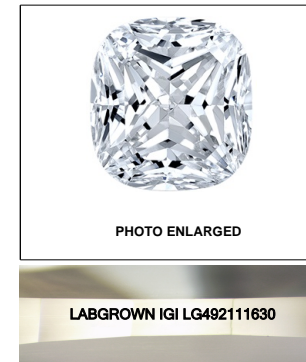


CLARITY CHARACTERISTICS



KEY TO SYMBOLS

Red symbols indicate internal characteristics. Green symbols indicate external characteristics.



LASERSCRIBESM

09/02/2021

IGI Report Number LG492111630

Shape and Cutting Style SQUARE CUSHION BRILLIANT

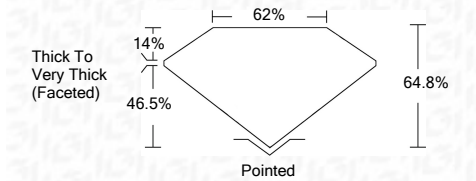
Measurements 6.83 x 6.57 x 4.26 mm

GRADING RESULTS

Carat Weight 1.73 CARAT

Color Grade F

Clarity Grade VVS 2



ADDITIONAL GRADING INFORMATION

Polish EXCELLENT

Symmetry EXCELLENT

Fluorescence NONE

Inscription(s) LABGROWN IGI LG492111630

Comments: This Laboratory Grown Diamond was created by Chemical Vapor Deposition (CVD) growth process and may include post-growth treatment. Type IIa



IGI

09/02/2021 IGI Report No. LG492111630 SQUARE CUSHION BRILLIANT 6.83 x 6.57 x 4.26 mm 1.73 CARAT F VVS 2 64.8% 62% Thick To Very Thick (Faceted) Pointed EXCELLENT EXCELLENT NONE LABGROWN IGI LG492111630

This Laboratory Grown Diamond was created by Chemical Vapor Deposition (CVD) growth process and may include post-growth treatment. Type IIa

