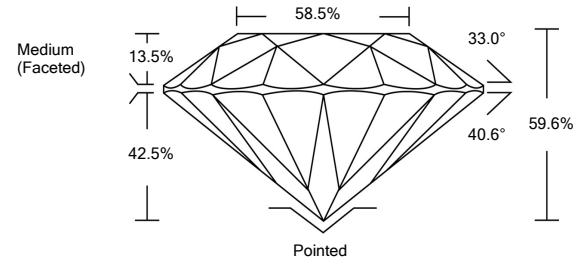




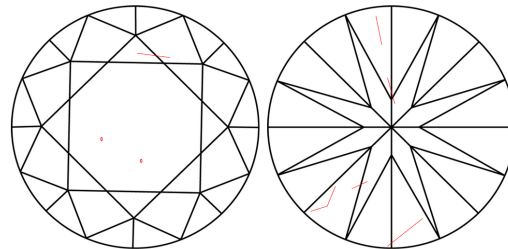
**LABORATORY GROWN DIAMOND REPORT**

LG492111869

**PROPORTIONS**



**CLARITY CHARACTERISTICS**



**KEY TO SYMBOLS**

Red symbols indicate internal characteristics.  
Green symbols indicate external characteristics.

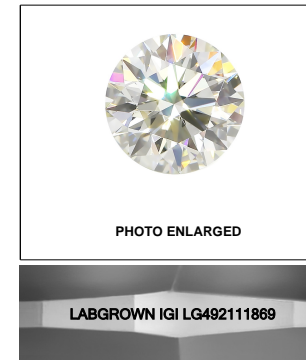
**GRADING SCALES**

COLOR GRADING SCALE	CL	NC	FT	VL	LT	
COLORLESS D-F		NEAR COLORLESS G-J	FAINT K-M	VERY LIGHT N-R	LIGHT S-Z	
CLARITY (10x) GRADING SCALE	FL	IF	VVS	VS	SI	I
FLAWLESS INTERNALLY FLAWLESS		VERY VERY SLIGHTLY INCLUDED	VERY SLIGHTLY INCLUDED	SLIGHTLY INCLUDED	INCLUDED	

The laboratory grown diamond described in this Report (Report) has been graded, tested, analyzed, examined and/or inscribed by International Gemological Institute (IGI). A laboratory grown diamond is one that has essentially the same chemical, physical and optical properties as a mined diamond, with the exception of being grown by man (a manufactured product). IGI employs and utilizes those techniques and equipment currently available to IGI, including, without limitation, 10X magnification, corrected triplet loupe, binocular microscope, master color comparison stones, non-contact-optical measuring device, Diamond Sure™, Diamond View™, Spectrophotometer and such other instruments and/or processes as deemed appropriate by IGI. This Report includes advanced security features. A duly accredited gemologist or jeweler can advise you with respect to the importance of and interrelationship between cut, color, clarity and carat weight.

**THIS REPORT IS NEITHER A GUARANTEE, VALUATION, NOR APPRAISAL OF THE GEMSTONE DESCRIBED HEREIN. PLEASE REVIEW THE LIMITATIONS AND RESTRICTIONS SET FORTH ONLINE. FOR ADDITIONAL INFORMATION, IMPORTANT LIMITATIONS AND DISCLAIMERS, PLEASE GO TO WWW.IGI.ORG OR CALL 1-888-BUY-IGIS.**

© INTERNATIONAL GEMOLOGICAL INSTITUTE, INC.



**LASERSCRIBE<sup>SM</sup>**

08/25/2021

IGI Report Number **LG492111869**

Shape and Cutting Style **ROUND BRILLIANT**

Measurements **7.62 - 7.63 x 4.54 mm**

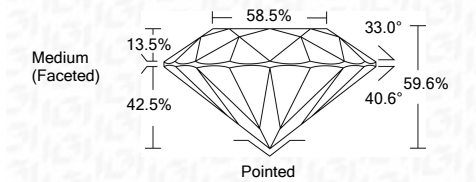
**GRADING RESULTS**

Carat Weight **1.61 CARAT**

Color Grade **I**

Clarity Grade **SI 2**

Cut Grade **IDEAL**



**ADDITIONAL GRADING INFORMATION**

Polish **EXCELLENT**

Symmetry **EXCELLENT**

Fluorescence **NONE**

Inscription(s) **LABGROWN IGI LG492111869**

Comments: This Laboratory Grown Diamond was created by Chemical Vapor Deposition (CVD) growth process and may include post-growth treatment.  
Type IIa



**IGI**

08/25/2021	IGI Report No. LG492111869	1.61 CARAT	I	Pointed
IGI Report No. LG492111869	ROUND BRILLIANT	SI 2	EXCELLENT	EXCELLENT
7.62 - 7.63 x 4.54 mm	Color Grade	IDEAL	EXCELLENT	NONE
1.61 CARAT	Clarity Grade	58.5%	EXCELLENT	LABGROWN IGI LG492111869
SI 2	Cut Grade	58.5%	EXCELLENT	Comments: This Laboratory Grown Diamond was created by Chemical Vapor Deposition (CVD) growth process and may include post-growth treatment.
IDEAL	Color Grade	Medium (Faceted)	EXCELLENT	Type IIa
58.5%	Clarity Grade	Pointed	EXCELLENT	
58.5%	Cut Grade	EXCELLENT	EXCELLENT	
Medium (Faceted)	Depth	EXCELLENT	EXCELLENT	
	Table	EXCELLENT	EXCELLENT	
	Grade	EXCELLENT	EXCELLENT	
	Culet	EXCELLENT	EXCELLENT	
	Polish	EXCELLENT	EXCELLENT	
	Symmetry	EXCELLENT	EXCELLENT	
	Fluorescence	EXCELLENT	EXCELLENT	
	Inscription(s)	EXCELLENT	EXCELLENT	
	Color Grade	EXCELLENT	EXCELLENT	