



LABORATORY GROWN DIAMOND REPORT

LG492111870

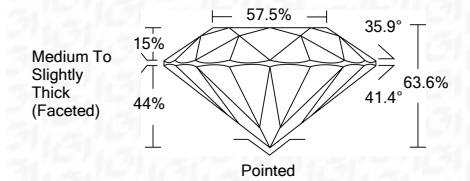
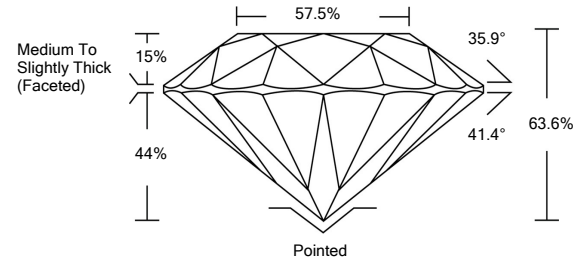
GRADING SCALES

Table with 5 columns for Color Grading Scale (CL, NC, FT, VLT, LT) and Clarity (10x) Grading Scale (FL, IF, VVS, VS, SI, I) with corresponding descriptions.

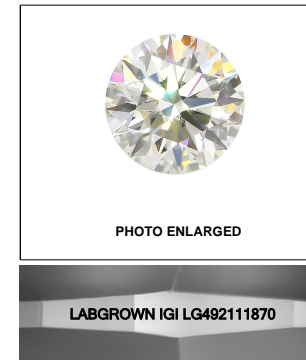
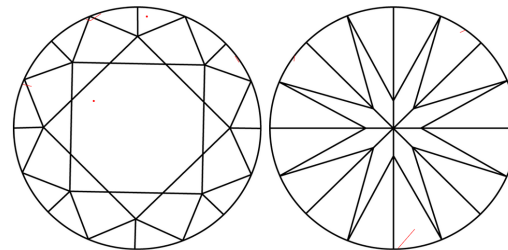
The laboratory grown diamond described in this Report (Report) has been graded, tested, analyzed, examined and/or inscribed by International Gemological Institute (IGI). A laboratory grown diamond is one that has essentially the same chemical, physical and optical properties as a mined diamond...

08/25/2021
IGI Report Number LG492111870
Shape and Cutting Style ROUND BRILLIANT
Measurements 7.18 - 7.24 x 4.59 mm
GRADING RESULTS
Carat Weight 1.50 CARAT
Color Grade J
Clarity Grade VS 2
Cut Grade EXCELLENT

PROPORTIONS



CLARITY CHARACTERISTICS



KEY TO SYMBOLS

Red symbols indicate internal characteristics. Green symbols indicate external characteristics.

LASERSCRIBE SM

ADDITIONAL GRADING INFORMATION
Polish EXCELLENT
Symmetry EXCELLENT
Fluorescence NONE
Inscription(s) LABGROWN IGI LG492111870

Comments: This Laboratory Grown Diamond was created by Chemical Vapor Deposition (CVD) growth process and may include post-growth treatment. Type IIa

08/25/2021
IGI Report Number LG492111870
Shape and Cutting Style ROUND BRILLIANT
Measurements 7.18 - 7.24 x 4.59 mm
GRADING RESULTS
Carat Weight 1.50 CARAT
Color Grade J
Clarity Grade VS 2
Cut Grade EXCELLENT
ADDITIONAL GRADING INFORMATION
Polish EXCELLENT
Symmetry EXCELLENT
Fluorescence NONE
Inscription(s) LABGROWN IGI LG492111870

Comments: This Laboratory Grown Diamond was created by Chemical Vapor Deposition (CVD) growth process and may include post-growth treatment. Type IIa



IGI

08/25/2021
IGI Report No. LG492111870
ROUND BRILLIANT
Carat Weight 1.50 CARAT
Color Grade J
Clarity Grade VS 2
Cut Grade EXCELLENT
Depth 63.6%
Table 57.5%
Girdle Medium To Slightly Thick (Faceted)
Culet Pointed
Polish EXCELLENT
Symmetry EXCELLENT
Fluorescence NONE
Inscription(s) LABGROWN IGI LG492111870
Comments: This Laboratory Grown Diamond was created by Chemical Vapor Deposition (CVD) growth process and may include post-growth treatment. Type IIa