



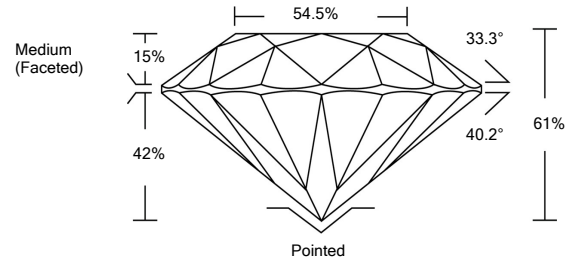
LABORATORY GROWN DIAMOND REPORT

LG492111879

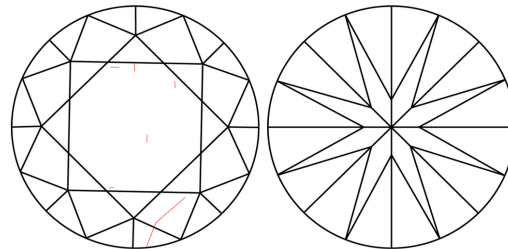
GRADING SCALES

Table with 5 columns for Color Grading Scale (CL, NC, FT, VLT, LT) and Clarity (10x) Grading Scale (FL, IF, VVS, VS, SI, I) with corresponding descriptions.

PROPORTIONS



CLARITY CHARACTERISTICS

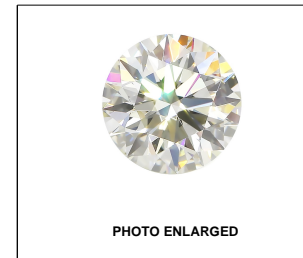


KEY TO SYMBOLS

Red symbols indicate internal characteristics. Green symbols indicate external characteristics.

The laboratory grown diamond described in this Report (Report) has been graded, tested, analyzed, examined and/or inscribed by International Gemological Institute (IGI). A laboratory grown diamond is one that has essentially the same chemical, physical and optical properties as a mined diamond...

© INTERNATIONAL GEMOLOGICAL INSTITUTE, INC.



LABGROWN IGI LG492111879

LASERSCRIBESM

08/25/2021

IGI Report Number LG492111879

Shape and Cutting Style ROUND BRILLIANT

Measurements 7.70 - 7.73 x 4.71 mm

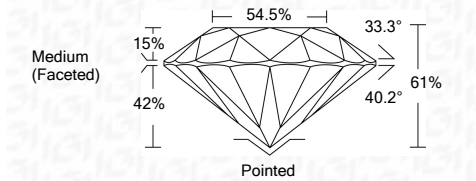
GRADING RESULTS

Carat Weight 1.72 CARAT

Color Grade J

Clarity Grade SI 2

Cut Grade IDEAL



ADDITIONAL GRADING INFORMATION

Polish EXCELLENT

Symmetry VERY GOOD

Fluorescence NONE

Inscription(s) LABGROWN IGI LG492111879

Comments: This Laboratory Grown Diamond was created by Chemical Vapor Deposition (CVD) growth process and may include post-growth treatment. Type IIa



IGI

Summary table of report details: IGI Report No. LG492111879, ROUND BRILLIANT, 7.70 - 7.73 x 4.71 mm, 1.72 CARAT, SI 2, IDEAL, 61%, 54.5%, Medium (Faceted), Pointed, EXCELLENT, VERY GOOD, NONE, LABGROWN IGI LG492111879.