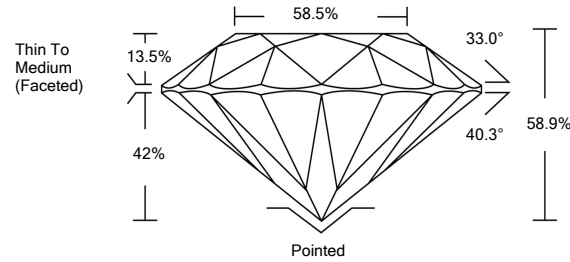




LG492112371

LABORATORY GROWN DIAMOND REPORT

PROPORTIONS

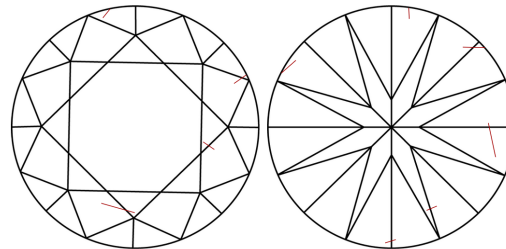


GRADING SCALES

Table with 5 columns for Color Grading Scale (CL to LT) and Clarity (10x) Grading Scale (FL to I). Includes descriptions like 'COLORLESS D-F', 'NEAR COLORLESS G-J', etc.

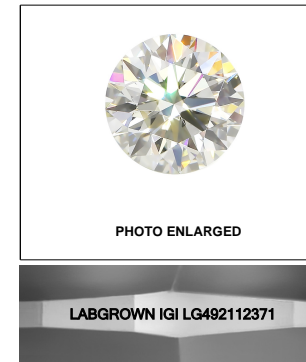
The laboratory grown diamond described in this Report (Report) has been graded, tested, analyzed, examined and/or inscribed by International Gemological Institute (IGI). A laboratory grown diamond is one that has essentially the same chemical, physical and optical properties as a mined diamond...

CLARITY CHARACTERISTICS



KEY TO SYMBOLS

Red symbols indicate internal characteristics. Green symbols indicate external characteristics.



LASERSCRIBESM

08/27/2021

IGI Report Number LG492112371

Shape and Cutting Style ROUND BRILLIANT

Measurements 7.53 - 7.56 x 4.45 mm

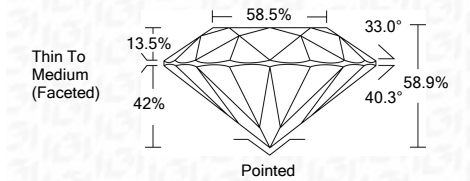
GRADING RESULTS

Carat Weight 1.54 CARAT

Color Grade I

Clarity Grade SI 2

Cut Grade IDEAL



ADDITIONAL GRADING INFORMATION

Polish EXCELLENT

Symmetry EXCELLENT

Fluorescence NONE

Inscription(s) LABGROWN IGI LG492112371

Comments: This Laboratory Grown Diamond was created by Chemical Vapor Deposition (CVD) growth process and may include post-growth treatment. Type IIa



IGI

Summary table of report details: IGI Report No. LG492112371, ROUND BRILLIANT, 7.53 - 7.56 x 4.45 mm, 1.54 CARAT, SI 2, IDEAL, 58.9%, 58.5%, Pointed, EXCELLENT, EXCELLENT, NONE, LABGROWN IGI LG492112371.

