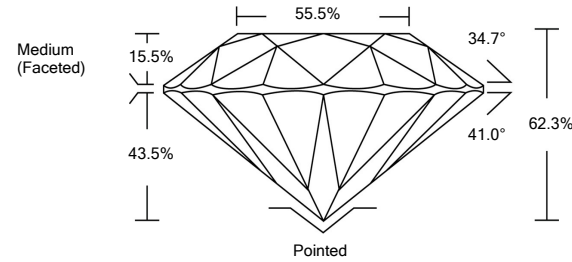




LABORATORY GROWN DIAMOND REPORT

LG492113510

PROPORTIONS



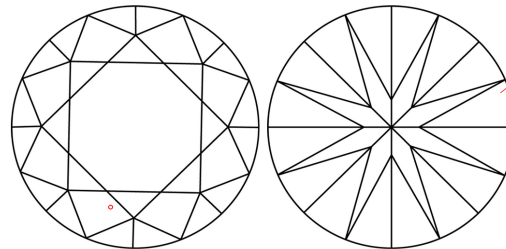
GRADING SCALES

Table with 5 columns for Color Grading Scale (CL to LT) and Clarity (10x) Grading Scale (FL to I).

The laboratory grown diamond described in this Report (Report) has been graded, tested, analyzed, examined and/or inscribed by International Gemological Institute (IGI). A laboratory grown diamond is one that has essentially the same chemical, physical and optical properties as a mined diamond...

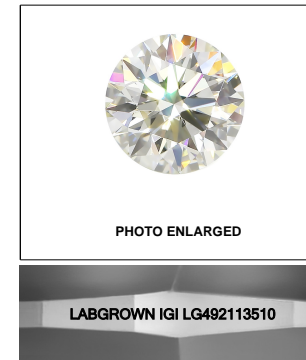
© INTERNATIONAL GEMOLOGICAL INSTITUTE, INC.

CLARITY CHARACTERISTICS



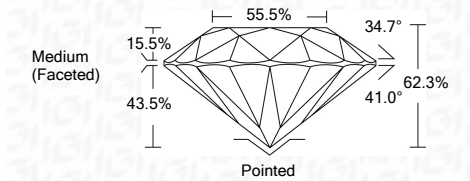
KEY TO SYMBOLS

Red symbols indicate internal characteristics. Green symbols indicate external characteristics.



LASERSCRIBESM

08/28/2021 IGI Report Number LG492113510 Shape and Cutting Style ROUND BRILLIANT Measurements 6.59 - 6.60 x 4.11 mm GRADING RESULTS Carat Weight 1.09 CARAT Color Grade I Clarity Grade VS 2 Cut Grade IDEAL



ADDITIONAL GRADING INFORMATION

Polish EXCELLENT Symmetry EXCELLENT Fluorescence NONE Inscription(s) LABGROWN IGI LG492113510

Comments: This Laboratory Grown Diamond was created by Chemical Vapor Deposition (CVD) growth process and may include post-growth treatment. Type IIa

08/28/2021 IGI Report Number LG492113510 Shape and Cutting Style ROUND BRILLIANT Measurements 6.59 - 6.60 x 4.11 mm

GRADING RESULTS Carat Weight 1.09 CARAT Color Grade I Clarity Grade VS 2 Cut Grade IDEAL

ADDITIONAL GRADING INFORMATION Polish EXCELLENT Symmetry EXCELLENT Fluorescence NONE Inscription(s) LABGROWN IGI LG492113510

Comments: This Laboratory Grown Diamond was created by Chemical Vapor Deposition (CVD) growth process and may include post-growth treatment. Type IIa



IGI

08/28/2021 IGI Report No. LG492113510 ROUND BRILLIANT 6.59 - 6.60 x 4.11 mm 1.09 CARAT I VS 2 IDEAL 62.3% 55.5% Medium (Faceted) Pointed EXCELLENT EXCELLENT NONE LABGROWN IGI LG492113510 Comments: This Laboratory Grown Diamond was created by Chemical Vapor Deposition (CVD) growth process and may include post-growth treatment. Type IIa