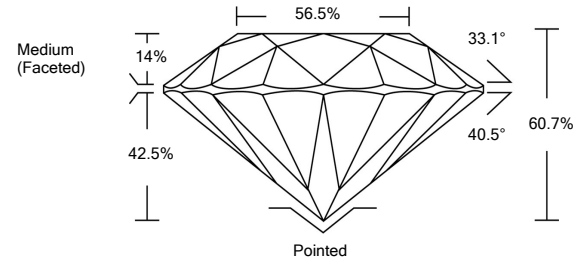




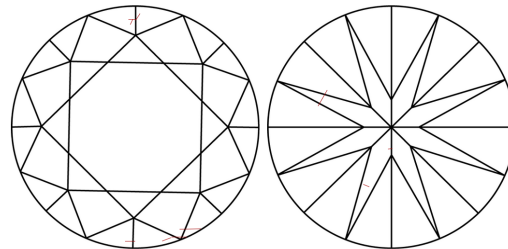
LABORATORY GROWN DIAMOND REPORT

LG492113518

PROPORTIONS



CLARITY CHARACTERISTICS



KEY TO SYMBOLS

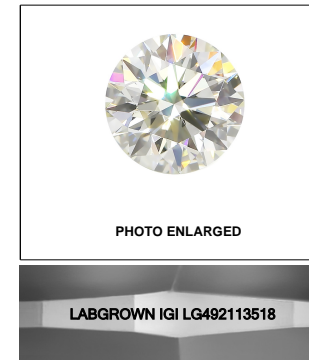
Red symbols indicate internal characteristics.
Green symbols indicate external characteristics.

GRADING SCALES

COLOR GRADING SCALE	CL	NC	FT	VL	LT
	COLORLESS D-F	NEAR COLORLESS G-J	FAINT K-M	VERY LIGHT N-R	LIGHT S-Z
CLARITY (10x) GRADING SCALE	FL	VVS	VS	SI	I
	FLAWLESS INTERNALLY FLAWLESS	VERY VERY SLIGHTLY INCLUDED	VERY SLIGHTLY INCLUDED	SLIGHTLY INCLUDED	INCLUDED

The laboratory grown diamond described in this Report (Report) has been graded, tested, analyzed, examined and/or inscribed by International Gemological Institute (IGI). A laboratory grown diamond is one that has essentially the same chemical, physical and optical properties as a mined diamond, with the exception of being grown by man (a manufactured product). IGI employs and utilizes those techniques and equipment currently available to IGI, including, without limitation, 10X magnification, corrected triplet loupe, binocular microscope, master color comparison stones, non-contact-optical measuring device, Diamond Sure™, Diamond View™, Spectrophotometer and such other instruments and/or processes as deemed appropriate by IGI. This Report includes advanced security features. A duly accredited gemologist or jeweler can advise you with respect to the importance of and interrelationship between cut, color, clarity and carat weight.
THIS REPORT IS NEITHER A GUARANTEE, VALUATION, NOR APPRAISAL OF THE GEMSTONE DESCRIBED HEREIN. PLEASE REVIEW THE LIMITATIONS AND RESTRICTIONS SET FORTH ONLINE. FOR ADDITIONAL INFORMATION, IMPORTANT LIMITATIONS AND DISCLAIMERS, PLEASE GO TO WWW.IGI.ORG OR CALL 1-888-BUY-IGIS.

© INTERNATIONAL GEMOLOGICAL INSTITUTE, INC.



LASERSCRIBESM

09/01/2021

IGI Report Number **LG492113518**

Shape and Cutting Style **ROUND BRILLIANT**

Measurements **6.88 - 6.91 x 4.18 mm**

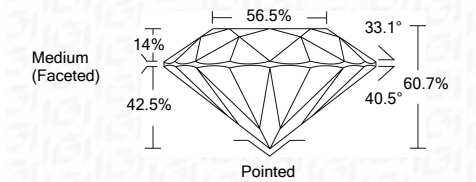
GRADING RESULTS

Carat Weight **1.22 CARAT**

Color Grade **I**

Clarity Grade **SI 1**

Cut Grade **IDEAL**



ADDITIONAL GRADING INFORMATION

Polish **EXCELLENT**

Symmetry **EXCELLENT**

Fluorescence **NONE**

Inscription(s) **LABGROWN IGI LG492113518**

Comments: This Laboratory Grown Diamond was created by Chemical Vapor Deposition (CVD) growth process and may include post-growth treatment.
Type IIa



IGI

09/01/2021	IGI Report No. LG492113518	1.22 CARAT	I	Pointed
IGI Report No. LG492113518	ROUND BRILLIANT	SI 1	EXCELLENT	EXCELLENT
6.88 - 6.91 x 4.18 mm	Carat Weight	IDEAL	EXCELLENT	EXCELLENT
6.88	Color Grade	60.7%	EXCELLENT	NONE
6.91	Cut Grade	56.5%	EXCELLENT	LABGROWN IGI LG492113518
4.18	Depth	Medium (Faceted)	EXCELLENT	Comments: This Laboratory Grown Diamond was created by Chemical Vapor Deposition (CVD) growth process and may include post-growth treatment. Type IIa
I	Clarity Grade	Pointed	EXCELLENT	
SI 1	Color Grade	EXCELLENT	EXCELLENT	
IDEAL	Cut Grade	EXCELLENT	EXCELLENT	
60.7%	Depth	EXCELLENT	EXCELLENT	
56.5%	Table	EXCELLENT	EXCELLENT	
Medium (Faceted)	Grade	EXCELLENT	EXCELLENT	
Pointed	Culet	EXCELLENT	EXCELLENT	
EXCELLENT	Polish	EXCELLENT	EXCELLENT	
EXCELLENT	Symmetry	EXCELLENT	EXCELLENT	
NONE	Fluorescence	EXCELLENT	EXCELLENT	
LABGROWN IGI LG492113518	Inscription(s)	EXCELLENT	EXCELLENT	