



**ELECTRONIC COPY**

# LABORATORY GROWN DIAMOND REPORT

LABORATORY GROWN DIAMOND REPORT

# LABORATORY GROWN DIAMOND REPORT

|                         |                             |
|-------------------------|-----------------------------|
| September 15, 2021      |                             |
| IGI Report Number       | LG492129232                 |
| Description             | LABORATORY GROWN<br>DIAMOND |
| Shape and Cutting Style | HEART BRILLIANT             |
| Measurements            | 6.59 X 7.16 X 3.92 MM       |

## GRADING RESULTS

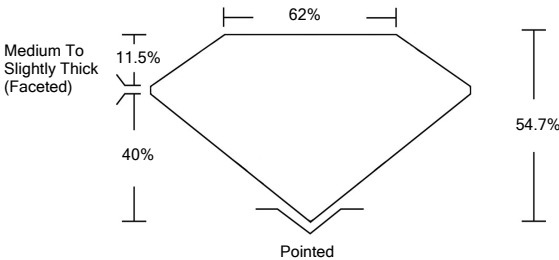
|               |            |
|---------------|------------|
| Carat Weight  | 1.01 CARAT |
| Color Grade   | G          |
| Clarity Grade | SI 1       |

## ADDITIONAL GRADING INFORMATION

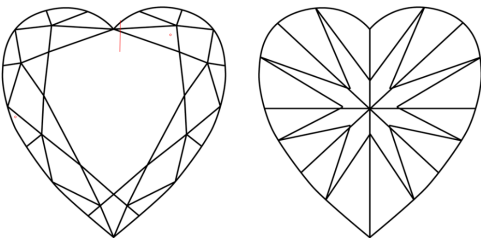
|                |                          |
|----------------|--------------------------|
| Polish         | EXCELLENT                |
| Symmetry       | EXCELLENT                |
| Fluorescence   | NONE                     |
| Inscription(s) | LABGROWN IGI LG492129232 |

Comments: This Laboratory Grown Diamond was created by Chemical Vapor Deposition (CVD) growth process and may include post-growth treatment.  
Type IIa

## PROPORTIONS



## CLARITY CHARACTERISTICS



## KEY TO SYMBOLS

Red symbols indicate internal characteristics.  
Green symbols indicate external characteristics.

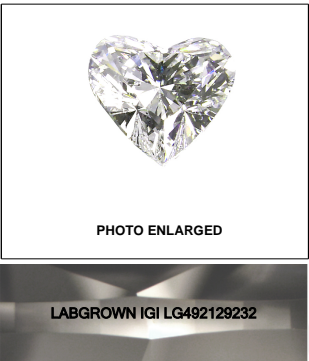
## GRADING SCALES

|                             |                              |                             |                        |                   |           |
|-----------------------------|------------------------------|-----------------------------|------------------------|-------------------|-----------|
| COLOR GRADING SCALE         | CL                           | NC                          | FT                     | VLT               | LT        |
|                             | COLORLESS D-F                | NEAR COLORLESS G-J          | FAINT K-M              | VERY LIGHT N-R    | LIGHT S-Z |
| CLARITY (10x) GRADING SCALE | FL                           | VVS                         | VS                     | SI                | I         |
|                             | FLAWLESS INTERNALLY FLAWLESS | VERY VERY SLIGHTLY INCLUDED | VERY SLIGHTLY INCLUDED | SLIGHTLY INCLUDED | INCLUDED  |

The laboratory grown diamond described in this Report ("Report") has been graded, tested, analyzed, examined and/or inscribed by International Gemological Institute (I.G.I.). A laboratory grown diamond is one that has essentially the same chemical, physical and optical properties as a natural diamond except it was created by a synthetic process (a manufactured product). I.G.I. employs and utilizes those techniques and equipment currently available to I.G.I., including, without limitation, 10X magnification, corrected incident light, binocular microscope, master color comparison stones, non-contact ultrasonic testing, infrared spectroscopy, photoluminescence, etc. The expertise of such instruments and/or processes as deemed appropriate by I.G.I. This Report includes advised security features. A duly accredited gemologist or jeweler can advise you with relevance the importance of and interrelationship between cut, color, clarity and carat weight.

**THIS REPORT IS NEITHER A GUARANTEE, VALUATION, NOR APPRAISAL OF THE GEMSTONE DESCRIBED HEREIN. PLEASE REVIEW THE LIMITATIONS AND RESTRICTIONS SET FORTH ONLINE. FOR MORE INFORMATION ON OUR POLICIES, TERMS AND CONDITIONS, VISIT US AT [WWW.IGI.ORG](http://WWW.IGI.ORG) OR CALL 1-888-BUY-IGI.**

© INTERNATIONAL GEMOLOGICAL INSTITUTE, INC.

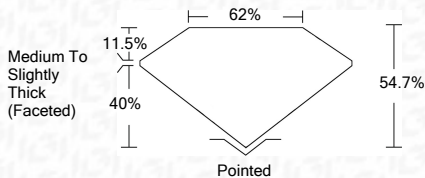
**LASERSCRIBE<sup>SM</sup>**

© IGI 2020, International Gemological Institute

FD - 10 20

**www.igi.org**

|                         |                             |
|-------------------------|-----------------------------|
| September 15, 2021      |                             |
| IGI Report Number       | LG492129232                 |
| Description             | LABORATORY GROWN<br>DIAMOND |
| Shape and Cutting Style | HEART BRILLIANT             |
| Measurements            | 6.59 X 7.16 X 3.92 MM       |
| GRADING RESULTS         |                             |
| Carat Weight            | 1.01 CARAT                  |
| Color Grade             | G                           |
| Clarity Grade           | SI 1                        |



### ADDITIONAL GRADING INFORMATION

|                |                          |
|----------------|--------------------------|
| Polish         | EXCELLENT                |
| Symmetry       | EXCELLENT                |
| Fluorescence   | NONE                     |
| Inscription(s) | LABGROWN IGI LG492129232 |

Comments: This Laboratory Grown Diamond was created by Chemical Vapor Deposition (CVD) growth process and may include post-growth treatment.  
Type IIa



# IGI

|                       |  |                                                                                                                                |  |
|-----------------------|--|--------------------------------------------------------------------------------------------------------------------------------|--|
| September 15, 2021    |  | IGI Report No. LG482129232                                                                                                     |  |
| HEART BRILLIANT       |  | 1.01 CARAT                                                                                                                     |  |
| 6.65 X 7.16 X 3.92 MM |  | SI 1                                                                                                                           |  |
| Color Grade           |  | 54.7%                                                                                                                          |  |
| Clarity Grade         |  | 62%                                                                                                                            |  |
| Depth                 |  | Medium to Slightly Thick (Faceted)                                                                                             |  |
| Table                 |  | Pointed                                                                                                                        |  |
| Girdle                |  | EXCELLENT                                                                                                                      |  |
| Culet                 |  | EXCELLENT                                                                                                                      |  |
| Polish                |  | NONE                                                                                                                           |  |
| Symmetry              |  | LARGELY UNIFORM                                                                                                                |  |
| Fluorescence          |  | LG482129232                                                                                                                    |  |
| Inscriptions(s)       |  | Comments:                                                                                                                      |  |
|                       |  | This Laboratory Grown Diamond was created by Chemical Vapor Deposition (CVD) growth process and may include growth inclusions. |  |
|                       |  | Type Ila                                                                                                                       |  |

This Laboratory Grown Diamond was created by Chemical Vapor Deposition (CVD) growth process and may include post-growth treatment.