



**ELECTRONIC COPY**

# LABORATORY GROWN DIAMOND REPORT

## LABORATORY GROWN DIAMOND REPORT

## LABORATORY GROWN DIAMOND REPORT

September 16, 2021

IGI Report Number **LG492131357**

Description	LABORATORY GROWN DIAMOND
Shape and Cutting Style	OVAL BRILLIANT

Measurements **11.29 X 7.91 X 5.15 MM**

## GRADING RESULTS

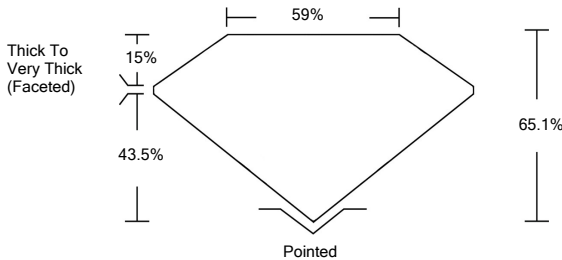
Carat Weight	3.01 CARATS
Color Grade	G
Clarity Grade	VS 2

### ADDITIONAL GRADING INFORMATION

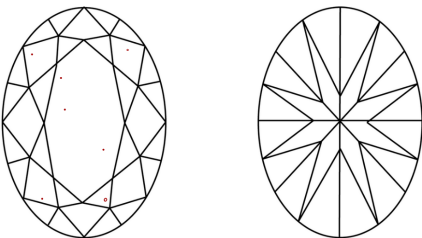
Polish	EXCELLENT
Symmetry	EXCELLENT
Fluorescence	NONE
Inscription(s)	LABGROWN IGI LG492131357

Comments: This Laboratory Grown Diamond was created by Chemical Vapor Deposition (CVD) growth process and may include post-growth treatment.  
Type IIa

## PROPORTIONS



## CLARITY CHARACTERISTICS



## KEY TO SYMBOLS

Red symbols indicate internal characteristics.  
Green symbols indicate external characteristics.

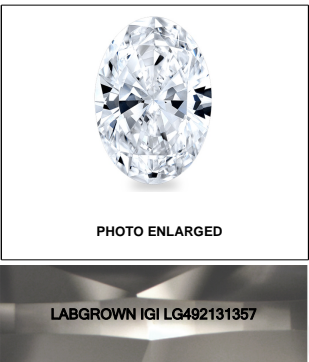
## GRADING SCALES

COLOR GRADING SCALE	CL		NC		FT		VLT		LT	
	COLORLESS D-F		NEAR COLORLESS G-J		FAINT K-M		VERY LIGHT N-R		LIGHT S-Z	
CLARITY (10x) GRADING SCALE	FL IF		VVS		VS		SI		I	
	FLAWLESS INTERNALLY FLAWLESS		VERY VERY SLIGHTLY INCLUDED		VERY SLIGHTLY INCLUDED		SLIGHTLY INCLUDED		INCLUDED	

The laboratory grown diamond described in this Report (Report) has been graded, tested, analyzed, examined and/or inscribed by International Gemological Institute (I.G.I.). A laboratory grown diamond is one that has essentially the same chemical, physical and optical properties as a natural diamond. I.G.I. employs and utilizes those techniques and equipment currently available to I.G.I., including, without limitation, 10X magnification, corrected line type, binocular microscope, master color comparison stones, non-contact, computerized refractometer, spectrometer, and/or other equipment used in such other instruments and/or processes as deemed appropriate by I.G.I. This Report includes advised security features. A duly accredited gemologist or jeweler can advise you with regard to the importance of and interrelationship between cut, color, clarity and carat weight.

**THIS REPORT IS NEITHER A GUARANTEE, VALUATION, NOR APPRAISAL OF THE GEMSTONE DESCRIBED HEREIN. PLEASE REVIEW THE LIMITATIONS AND RESTRICTIONS SET FORTH ONLINE. FOR MORE INFORMATION, VISIT [WWW.IGI.ORG](http://WWW.IGI.ORG) OR CALL 1-888-BUY-IGI.**

© INTERNATIONAL GEMOLOGICAL INSTITUTE, INC.

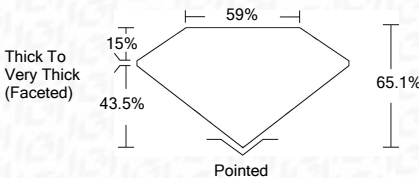
**LASERSCRIBE<sup>SM</sup>**

© IGI 2020, International Gemological Institute

FD - 10 20

**www.igi.org**

September 16, 2021	
IGI Report Number	LG492131357
Description	LABORATORY GROWN DIAMOND
Shape and Cutting Style	OVAL BRILLIANT
Measurements	11.29 X 7.91 X 5.15 MM
GRADING RESULTS	
Carat Weight	3.01 CARAT(S)
Color Grade	G
Clarity Grade	VS 2



### ADDITIONAL GRADING INFORMATION

Polish	EXCELLENT
Symmetry	EXCELLENT
Fluorescence	NONE
Inscription(s)	LABGROWN IGI LG492131357

Comments: This Laboratory Grown Diamond was created by Chemical Vapor Deposition (CVD) growth process and may include post-growth treatment.  
Type IIa



# IGI

September 16, 2021	IGI Report No. LG482131357										
11.29 X 7.91 X 5.15 MM	3.01 CARATS										
Color Weight											
Color Grade											
Clarity Grade	VS 2										
Depth	65.1%										
Table	59%										
Girdle	Thick To Very Thick (Faced)										
Culet	Pointed										
Polish	EXCELLENT										
Symmetry	EXCELLENT										
Fluorescence	NONE										
Inscriptions(s)	LARGONIAN (G) LG482131357										
Comments:	This Laboratory Grown Diamond was created by Chemical Vapor Deposition (CVD) growth process and may include growth inclusions and treatment. Type Ia										