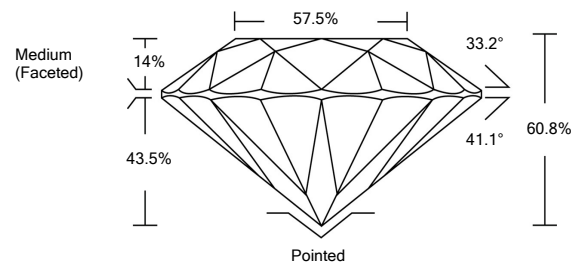




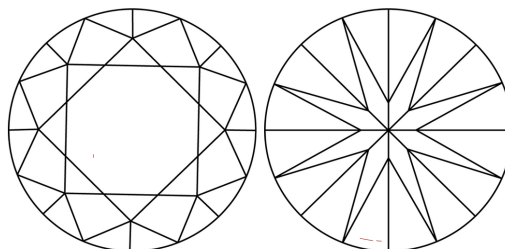
LG492134046

LABORATORY GROWN DIAMOND REPORT

PROPORTIONS



CLARITY CHARACTERISTICS



KEY TO SYMBOLS

Red symbols indicate internal characteristics.
Green symbols indicate external characteristics.

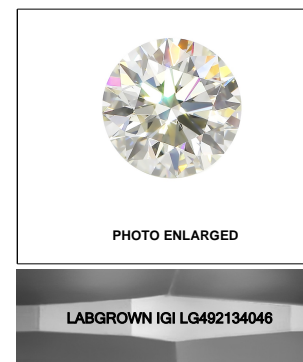
GRADING SCALES

COLOR GRADING SCALE	CL	NC	FT	VL	LT	
	COLORLESS D-F	NEAR COLORLESS G-J	FAINT K-M	VERY LIGHT N-R	LIGHT S-Z	
CLARITY (10x) GRADING SCALE	FL	IF	VVS	VS	SI	I
	FLAWLESS INTERNALLY FLAWLESS	VERY VERY SLIGHTLY INCLUDED	VERY SLIGHTLY INCLUDED	SLIGHTLY INCLUDED	INCLUDED	

The laboratory grown diamond described in this Report (Report) has been graded, tested, analyzed, examined and/or inscribed by International Gemological Institute (IGI). A laboratory grown diamond is one that has essentially the same chemical, physical and optical properties as a mined diamond, with the exception of being grown by man (a manufactured product). IGI employs and utilizes those techniques and equipment currently available to IGI, including, without limitation, 10X magnification, corrected triplet loupe, binocular microscope, master color comparison stones, non-contact-optical measuring device, Diamond Sure™, Diamond View™, Spectrophotometer and such other instruments and/or processes as deemed appropriate by IGI. This Report includes advanced security features. A duly accredited gemologist or jeweler can advise you with respect to the importance of and interrelationship between cut, color, clarity and carat weight.

THIS REPORT IS NEITHER A GUARANTEE, VALUATION, NOR APPRAISAL OF THE GEMSTONE DESCRIBED HEREIN. PLEASE REVIEW THE LIMITATIONS AND RESTRICTIONS SET FORTH ONLINE. FOR ADDITIONAL INFORMATION, IMPORTANT LIMITATIONS AND DISCLAIMERS, PLEASE GO TO WWW.IGI.ORG OR CALL 1-888-BUY-IGIS.

© INTERNATIONAL GEMOLOGICAL INSTITUTE, INC.



LASERSCRIBESM

September 4, 2021

IGI Report Number

LG492134046

Description

**LABORATORY GROWN
DIAMOND**

Shape and Cutting Style

ROUND BRILLIANT

Measurements

8.46 - 8.48 X 5.15 MM

GRADING RESULTS

Carat Weight

2.24 CARATS

Color Grade

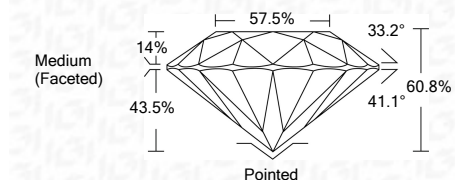
I

Clarity Grade

VVS 2

Cut Grade

IDEAL



ADDITIONAL GRADING INFORMATION

Polish

EXCELLENT

Symmetry

EXCELLENT

Fluorescence

NONE

Inscription(s)

LABGROWN IGI LG492134046

Comments: This Laboratory Grown Diamond was created by Chemical Vapor Deposition (CVD) growth process and may include post-growth treatment.
Type IIa

September 4, 2021

IGI Report Number

LG492134046

Description

**LABORATORY GROWN
DIAMOND**

Shape and Cutting Style

ROUND BRILLIANT

Measurements

8.46 - 8.48 X 5.15 MM

GRADING RESULTS

Carat Weight

2.24 CARATS

Color Grade

I

Clarity Grade

VVS 2

Cut Grade

IDEAL

ADDITIONAL GRADING INFORMATION

Polish

EXCELLENT

Symmetry

EXCELLENT

Fluorescence

NONE

Inscription(s)

LABGROWN IGI LG492134046

Comments: This Laboratory Grown Diamond was created by Chemical Vapor Deposition (CVD) growth process and may include post-growth treatment.
Type IIa



IGI

September 4, 2021	IGI Report No. LG492134046	2.24 CARATS	I	Pointed	EXCELLENT	EXCELLENT	NONE	LABGROWN IGI LG492134046	Comments: This Laboratory Grown Diamond was created by Chemical Vapor Deposition (CVD) growth process and may include post-growth treatment. Type IIa
ROUND BRILLIANT	8.46 - 8.48 X 5.15 MM	2.24 CARATS	VVS 2	IDEAL	EXCELLENT	EXCELLENT	NONE	LABGROWN IGI LG492134046	
Carat Weight	8.46 - 8.48 X 5.15 MM	2.24 CARATS	VVS 2	IDEAL	EXCELLENT	EXCELLENT	NONE	LABGROWN IGI LG492134046	
Color Grade	8.46 - 8.48 X 5.15 MM	2.24 CARATS	VVS 2	IDEAL	EXCELLENT	EXCELLENT	NONE	LABGROWN IGI LG492134046	
Clarity Grade	8.46 - 8.48 X 5.15 MM	2.24 CARATS	VVS 2	IDEAL	EXCELLENT	EXCELLENT	NONE	LABGROWN IGI LG492134046	
Cut Grade	8.46 - 8.48 X 5.15 MM	2.24 CARATS	VVS 2	IDEAL	EXCELLENT	EXCELLENT	NONE	LABGROWN IGI LG492134046	
Depth	8.46 - 8.48 X 5.15 MM	2.24 CARATS	VVS 2	IDEAL	EXCELLENT	EXCELLENT	NONE	LABGROWN IGI LG492134046	
Table	8.46 - 8.48 X 5.15 MM	2.24 CARATS	VVS 2	IDEAL	EXCELLENT	EXCELLENT	NONE	LABGROWN IGI LG492134046	
Color Grade	8.46 - 8.48 X 5.15 MM	2.24 CARATS	VVS 2	IDEAL	EXCELLENT	EXCELLENT	NONE	LABGROWN IGI LG492134046	
Culet	8.46 - 8.48 X 5.15 MM	2.24 CARATS	VVS 2	IDEAL	EXCELLENT	EXCELLENT	NONE	LABGROWN IGI LG492134046	