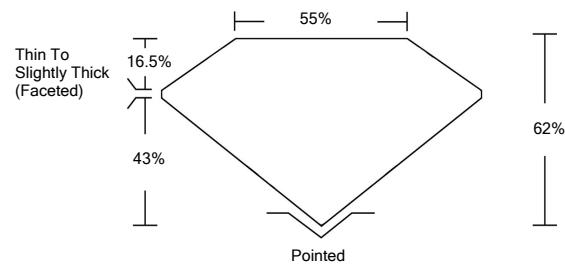




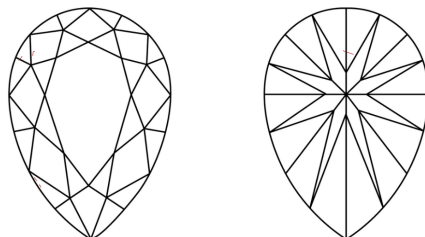
LG492135810

**LABORATORY GROWN DIAMOND REPORT**

**PROPORTIONS**



**CLARITY CHARACTERISTICS**



**KEY TO SYMBOLS**

Red symbols indicate internal characteristics.  
Green symbols indicate external characteristics.

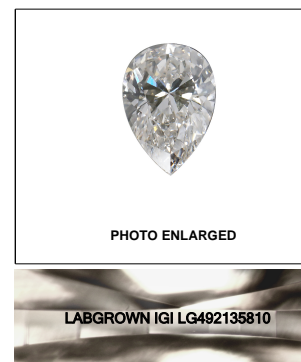
**GRADING SCALES**

<b>COLOR GRADING SCALE</b>	CL COLORLESS D-F	NC NEAR COLORLESS G-J	FT FAINT K-M	VL VERY LIGHT N-R	LT LIGHT S-Z	
<b>CLARITY (10x) GRADING SCALE</b>	FL FLAWLESS INTERNALLY FLAWLESS	IF INTERNAL FLAWLESS	VVS VERY VERY SLIGHTLY INCLUDED	VS VERY SLIGHTLY INCLUDED	SI SLIGHTLY INCLUDED	I INCLUDED

The laboratory grown diamond described in this Report (Report) has been graded, tested, analyzed, examined and/or inscribed by International Gemological Institute (IGI). A laboratory grown diamond is one that has essentially the same chemical, physical and optical properties as a mined diamond, with the exception of being grown by man (a manufactured product). IGI employs and utilizes those techniques and equipment currently available to IGI, including, without limitation, 10X magnification, corrected triplet loupe, binocular microscope, master color comparison stones, non-contact-optical measuring device, Diamond Sure™, Diamond View™, Spectrophotometer and such other instruments and/or processes as deemed appropriate by IGI. This Report includes advanced security features. A duly accredited gemologist or jeweler can advise you with respect to the importance of and interrelationship between cut, color, clarity and carat weight.

**THIS REPORT IS NEITHER A GUARANTEE, VALUATION, NOR APPRAISAL OF THE GEMSTONE DESCRIBED HEREIN. PLEASE REVIEW THE LIMITATIONS AND RESTRICTIONS SET FORTH ONLINE. FOR ADDITIONAL INFORMATION, IMPORTANT LIMITATIONS AND DISCLAIMERS, PLEASE GO TO WWW.IGI.ORG OR CALL 1-888-BUY-IGI.**

© INTERNATIONAL GEMOLOGICAL INSTITUTE, INC.



LABGROWN IGI LG492135810

LASERSCRIBE<sup>SM</sup>

September 11, 2021

IGI Report Number **LG492135810**

Description **LABORATORY GROWN  
DIAMOND**

Shape and Cutting Style **PEAR BRILLIANT**

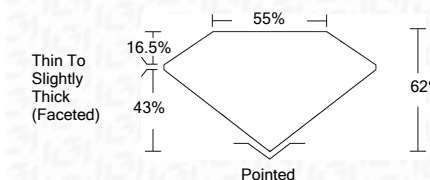
Measurements **9.28 X 5.87 X 3.64 MM**

**GRADING RESULTS**

Carat Weight **1.14 CARAT**

Color Grade **E**

Clarity Grade **VS 1**



**ADDITIONAL GRADING INFORMATION**

Polish **EXCELLENT**

Symmetry **EXCELLENT**

Fluorescence **NONE**

Inscription(s) **LABGROWN IGI LG492135810**

Comments: As Grown - No indication of post-growth treatment.  
This Laboratory Grown Diamond was created by High Pressure High Temperature (HPHT) growth process.  
Type II



**IGI**

September 11, 2021	IGI Report No. LG492135810	1.14 CARAT	E
PEAR BRILLIANT	9.28 X 5.87 X 3.64 MM	VS 1	62%
Carat Weight	Color Grade	Table	55%
Clarity Grade	Depth	Grade	Thin To Slightly Thick (Faceted)
Polish	Symmetry	Fluorescence	Pointed
EXCELLENT	EXCELLENT	NONE	EXCELLENT
EXCELLENT	EXCELLENT	LABGROWN IGI LG492135810	EXCELLENT
None	Inscription(s)	Comments:	
		As Grown - No indication of post-growth treatment.	
		This Laboratory Grown Diamond was created by High Pressure High Temperature (HPHT) growth process.	
		Type II	