



LG494185541

LABORATORY GROWN DIAMOND REPORT

September 21, 2021
 IGI Report Number **LG494185541**
 Description **LABORATORY GROWN
DIAMOND**
 Shape and Cutting Style **ROUND BRILLIANT**
 Measurements **7.49 - 7.51 X 4.66 MM**

GRADING RESULTS

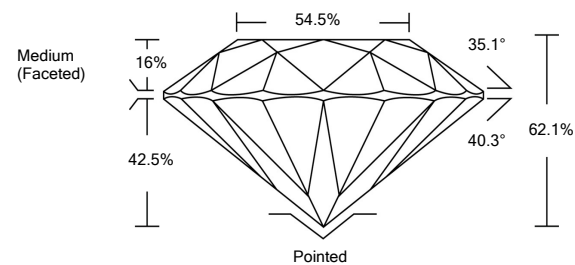
Carat Weight **1.61 CARAT**
 Color Grade **I**
 Clarity Grade **VS 1**
 Cut Grade **IDEAL**

ADDITIONAL GRADING INFORMATION

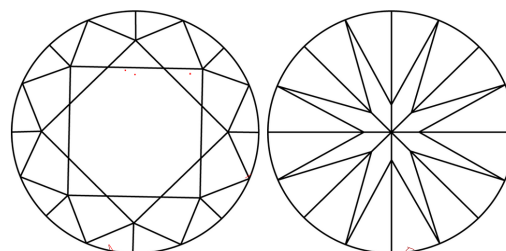
Polish **EXCELLENT**
 Symmetry **EXCELLENT**
 Fluorescence **NONE**
 Inscription(s) **LABGROWN IGI LG494185541**

Comments: This Laboratory Grown Diamond was created by Chemical Vapor Deposition (CVD) growth process and may include post-growth treatment.
 Type IIa

PROPORTIONS



CLARITY CHARACTERISTICS



KEY TO SYMBOLS

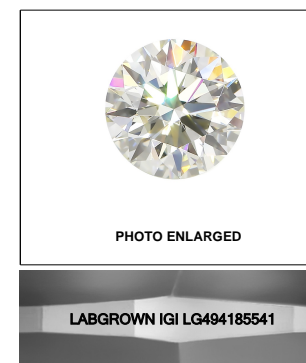
Red symbols indicate internal characteristics.
 Green symbols indicate external characteristics.

GRADING SCALES

COLOR GRADING SCALE	CL COLORLESS D-F	NC NEAR COLORLESS G-J	FT FAINT K-M	VL VERY LIGHT N-R	LT LIGHT S-Z	
CLARITY (10x) GRADING SCALE	FL FLAWLESS INTERNALLY FLAWLESS	IF INTERNAL FLAWLESS	VVS VERY VERY SLIGHTLY INCLUDED	VS VERY SLIGHTLY INCLUDED	SI SLIGHTLY INCLUDED	I INCLUDED

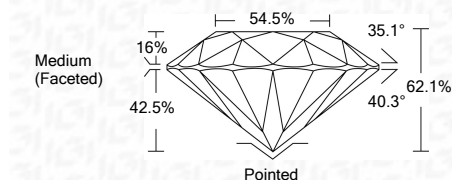
The laboratory grown diamond described in this Report (Report) has been graded, tested, analyzed, examined and/or inscribed by International Gemological Institute (IGI). A laboratory grown diamond is one that has essentially the same chemical, physical and optical properties as a mined diamond, with the exception of being grown by man (a manufactured product). IGI employs and utilizes those techniques and equipment currently available to IGI, including, without limitation, 10X magnification, corrected triplet loupe, binocular microscope, master color comparison stones, non-contact-optical measuring device, Diamond Sure™, Diamond View™, Spectrophotometer and such other instruments and/or processes as deemed appropriate by IGI. This Report includes advanced security features. A duly accredited gemologist or jeweler can advise you with respect to the importance of and interrelationship between cut, color, clarity and carat weight.
THIS REPORT IS NEITHER A GUARANTEE, VALUATION, NOR APPRAISAL OF THE GEMSTONE DESCRIBED HEREIN. PLEASE REVIEW THE LIMITATIONS AND RESTRICTIONS SET FORTH ONLINE. FOR ADDITIONAL INFORMATION, IMPORTANT LIMITATIONS AND DISCLAIMERS, PLEASE GO TO WWW.IGI.ORG OR CALL 1-888-BUY-IGIS.

© INTERNATIONAL GEMOLOGICAL INSTITUTE, INC.



LASERSCRIBESM

September 21, 2021
 IGI Report Number **LG494185541**
 Description **LABORATORY GROWN
DIAMOND**
 Shape and Cutting Style **ROUND BRILLIANT**
 Measurements **7.49 - 7.51 X 4.66 MM**
GRADING RESULTS
 Carat Weight **1.61 CARAT**
 Color Grade **I**
 Clarity Grade **VS 1**
 Cut Grade **IDEAL**



ADDITIONAL GRADING INFORMATION

Polish **EXCELLENT**
 Symmetry **EXCELLENT**
 Fluorescence **NONE**
 Inscription(s) **LABGROWN IGI LG494185541**

Comments: This Laboratory Grown Diamond was created by Chemical Vapor Deposition (CVD) growth process and may include post-growth treatment.
 Type IIa



IGI

September 21, 2021
 IGI Report No. **LG494185541**
ROUND BRILLIANT
 Carat Weight **1.61 CARAT**
 Color Grade **I**
 Clarity Grade **VS 1**
 Cut Grade **IDEAL**
 Depth **62.1%**
 Table **54.5%**
 Girdle **Medium (Faceted)**
 Culet **Pointed**
 Polish **EXCELLENT**
 Symmetry **EXCELLENT**
 Fluorescence **NONE**
 Inscription(s) **LABGROWN IGI
LG494185541**
 Comments: This Laboratory Grown Diamond was created by Chemical Vapor Deposition (CVD) growth process and may include post-growth treatment.
 Type IIa