



November 15, 2021	
IGI Report Number	LG496107455
Description	LABORATORY GROWN DIAMOND
Shape and Cutting Style	CUT CORNERED RECTANGULAR MODIFIED BRILLIANT
Measurements	6.61 X 5.03 X 3.41 MM
GRADING RESULTS	
Carat Weight	1.00 CARAT
Color Grade	F
Clarity Grade	VVS 2
ADDITIONAL GRADING INFORMATION	
Polish	EXCELLENT
Symmetry	EXCELLENT
Fluorescence	NONE
Inscription(s)	LABGROWN IGI LG496107455

Comments: This Laboratory Grown Diamond was created by Chemical Vapor Deposition (CVD) growth process and may include post-growth treatment.
Type IIa

LABORATORY GROWN
DIAMOND REPORT

LABORATORY GROWN DIAMOND REPORT

November 15, 2021	
IGI Report Number	LG496107455
Description	LABORATORY GROWN DIAMOND
Shape and Cutting Style	CUT CORNERED RECTANGULAR MODIFIED BRILLIANT
Measurements	6.61 X 5.03 X 3.41 MM

COLOR GRADING SCALE	CL		NC		FT		VLT		LT	
	COLORLESS D-F		NEAR COLORLESS G-J		FAINT K-M		VERY LIGHT N-R		LIGHT S-Z	
CLARITY (10x) GRADING SCALE	FL IF		VVS		VS		SI		I	
	FLAWLESS INTERNALLY FLAWLESS		VERY VERY SLIGHTLY INCLUDED		VERY SLIGHTLY INCLUDED		SLIGHTLY INCLUDED		INCLUDED	

The laboratory growdiamond described in this Report (Report) has been graded, tested, analyzed, examined and/or inscribed by International Gemological Institute (IGI). A laboratory grown diamond is one that has essentially the same chemical, physical and optical properties as a natural diamond. IGI is a laboratory owned and operated by a man (a manufactured product). IGI employs and utilizes those techniques and equipment currently available to IGI, including, without limitation, 10X magnification, corrected triplet loupe, binocular microscope, master color comparison stones, non-contact-optical colorimetry, ultraviolet fluorescence, infrared spectroscopy, and other scientific instruments and/or processes as deemed appropriate by IGI. This Report includes additional security features. A duly accredited gemologist or jeweler can advise you with respect to the importance of and interrelationship between cut, color, clarity and carat weight.

THIS REPORT IS NEITHER A GUARANTEE, VALUATION, NOR APPRAISAL OF THE GEMSTONE DESCRIBED HEREIN. PLEASE REVIEW THE LIMITATIONS AND RESTRICTIONS SET FORTH ONLINE FOR THIS REPORT. IGI, IGI.COM, IGI.ORG, IGI REPORTS, IGI REPORTS.COM, IGI REPORTS.NET, IGI REPORTS.INFO, IGI REPORTS.CO, IGI REPORTS.CN, IGI REPORTS.CA, IGI REPORTS.AU, IGI REPORTS.EU, IGI REPORTS.AS, IGI REPORTS.AE, IGI REPORTS.AF, IGI REPORTS.AG, IGI REPORTS.AL, IGI REPORTS.AM, IGI REPORTS.AN, IGI REPORTS.AO, IGI REPORTS.AR, IGI REPORTS.AS, IGI REPORTS.AT, IGI REPORTS.AU, IGI REPORTS.AZ, IGI REPORTS.BA, IGI REPORTS.BB, IGI REPORTS.BD, IGI REPORTS.BE, IGI REPORTS.BF, IGI REPORTS.BG, IGI REPORTS.BH, IGI REPORTS.BI, IGI REPORTS.BJ, IGI REPORTS.BM, IGI REPORTS.BN, IGI REPORTS.BO, IGI REPORTS.BR, IGI REPORTS.BS, IGI REPORTS.BT, IGI REPORTS.BV, IGI REPORTS.BW, IGI REPORTS.BX, IGI REPORTS.BY, IGI REPORTS.BZ, IGI REPORTS.CA, IGI REPORTS.CC, IGI REPORTS.CD, IGI REPORTS.CE, IGI REPORTS.CF, IGI REPORTS.CG, IGI REPORTS.CH, IGI REPORTS.CI, IGI REPORTS.CK, IGI REPORTS.CL, IGI REPORTS.CM, IGI REPORTS.CN, IGI REPORTS.CO, IGI REPORTS.CP, IGI REPORTS.CR, IGI REPORTS.CU, IGI REPORTS.CV, IGI REPORTS.CX, IGI REPORTS.CY, IGI REPORTS.CZ, IGI REPORTS.DE, IGI REPORTS.DG, IGI REPORTS.DK, IGI REPORTS.DL, IGI REPORTS.DM, IGI REPORTS.DO, IGI REPORTS.DP, IGI REPORTS.DR, IGI REPORTS.DS, IGI REPORTS.DT, IGI REPORTS.DU, IGI REPORTS.DV, IGI REPORTS.DW, IGI REPORTS.DX, IGI REPORTS.DY, IGI REPORTS.DZ, IGI REPORTS.EA, IGI REPORTS.EC, IGI REPORTS.ED, IGI REPORTS.EE, IGI REPORTS.EF, IGI REPORTS.EG, IGI REPORTS.EH, IGI REPORTS.EI, IGI REPORTS.EJ, IGI REPORTS.EK, IGI REPORTS.EL, IGI REPORTS.EN, IGI REPORTS.EO, IGI REPORTS.ER, IGI REPORTS.ES, IGI REPORTS.ET, IGI REPORTS.EU, IGI REPORTS.EV, IGI REPORTS.EW, IGI REPORTS.EX, IGI REPORTS.EY, IGI REPORTS.EZ, IGI REPORTS.FA, IGI REPORTS.FB, IGI REPORTS.FC, IGI REPORTS.FD, IGI REPORTS.FE, IGI REPORTS.FG, IGI REPORTS.FH, IGI REPORTS.FI, IGI REPORTS.FJ, IGI REPORTS.FK, IGI REPORTS.FL, IGI REPORTS.FM, IGI REPORTS.FN, IGI REPORTS.FO, IGI REPORTS.FP, IGI REPORTS.FQ, IGI REPORTS.FR, IGI REPORTS.FS, IGI REPORTS.FT, IGI REPORTS.FU, IGI REPORTS.FV, IGI REPORTS.FW, IGI REPORTS.FX, IGI REPORTS.FY, IGI REPORTS.FZ, IGI REPORTS.GA, IGI REPORTS.GB, IGI REPORTS.GC, IGI REPORTS.GD, IGI REPORTS.GE, IGI REPORTS.GF, IGI REPORTS.GG, IGI REPORTS.GH, IGI REPORTS.GI, IGI REPORTS.GJ, IGI REPORTS.GK, IGI REPORTS.GL, IGI REPORTS.GM, IGI REPORTS.GN, IGI REPORTS.GO, IGI REPORTS.GP, IGI REPORTS.GQ, IGI REPORTS.GR, IGI REPORTS.GS, IGI REPORTS.GT, IGI REPORTS.GU, IGI REPORTS.GV, IGI REPORTS.GW, IGI REPORTS.GX, IGI REPORTS.GY, IGI REPORTS.GZ, IGI REPORTS.HA, IGI REPORTS.HB, IGI REPORTS.HC, IGI REPORTS.HD, IGI REPORTS.HE, IGI REPORTS.HF, IGI REPORTS.HG, IGI REPORTS.HH, IGI REPORTS.HI, IGI REPORTS.HJ, IGI REPORTS.HK, IGI REPORTS.HL, IGI REPORTS.HM, IGI REPORTS.HN, IGI REPORTS.HO, IGI REPORTS.HP, IGI REPORTS.HQ, IGI REPORTS.HR, IGI REPORTS.HS, IGI REPORTS.HT, IGI REPORTS.HU, IGI REPORTS.HV, IGI REPORTS.HW, IGI REPORTS.HX, IGI REPORTS.HY, IGI REPORTS.HZ, IGI REPORTS.IA, IGI REPORTS.IB, IGI REPORTS.IC, IGI REPORTS.ID, IGI REPORTS.IE, IGI REPORTS.IF, IGI REPORTS.IG, IGI REPORTS.IH, IGI REPORTS.II, IGI REPORTS.IJ, IGI REPORTS.IK, IGI REPORTS.IL, IGI REPORTS.IM, IGI REPORTS.IN, IGI REPORTS.IO, IGI REPORTS.IP, IGI REPORTS.IQ, IGI REPORTS.IR, IGI REPORTS.IS, IGI REPORTS.IT, IGI REPORTS.IU, IGI REPORTS.IV, IGI REPORTS.IW, IGI REPORTS.IX, IGI REPORTS.IY, IGI REPORTS.IZ, IGI REPORTS.JA, IGI REPORTS.JB, IGI REPORTS.JC, IGI REPORTS.JD, IGI REPORTS.JE, IGI REPORTS.JF, IGI REPORTS.JG, IGI REPORTS.JH, IGI REPORTS.JI, IGI REPORTS.JJ, IGI REPORTS.JK, IGI REPORTS.JL, IGI REPORTS.JM, IGI REPORTS.JN, IGI REPORTS.JO, IGI REPORTS.JP, IGI REPORTS.JQ, IGI REPORTS.JR, IGI REPORTS.JS, IGI REPORTS.JT, IGI REPORTS.JU, IGI REPORTS.JV, IGI REPORTS.JW, IGI REPORTS.JX, IGI REPORTS.JY, IGI REPORTS.JZ, IGI REPORTS.KA, IGI REPORTS.KB, IGI REPORTS.KC, IGI REPORTS.KD, IGI REPORTS.KE, IGI REPORTS.KF, IGI REPORTS.KG, IGI REPORTS.KH, IGI REPORTS.KI, IGI REPORTS.KJ, IGI REPORTS.KK, IGI REPORTS.KL, IGI REPORTS.KM, IGI REPORTS.KN, IGI REPORTS.KO, IGI REPORTS.KP, IGI REPORTS.KQ, IGI REPORTS.KR, IGI REPORTS.KS, IGI REPORTS.KT, IGI REPORTS.KU, IGI REPORTS.KV, IGI REPORTS.KW, IGI REPORTS.KX, IGI REPORTS.KY, IGI REPORTS.KZ, IGI REPORTS.LA, IGI REPORTS.LB, IGI REPORTS.LC, IGI REPORTS.LD, IGI REPORTS.LE, IGI REPORTS.LF, IGI REPORTS.LG, IGI REPORTS.LH, IGI REPORTS.LI, IGI REPORTS.LJ, IGI REPORTS.LK, IGI REPORTS.LL, IGI REPORTS.LM, IGI REPORTS.LN, IGI REPORTS.LO, IGI REPORTS.LP, IGI REPORTS.LQ, IGI REPORTS.LR, IGI REPORTS.LS, IGI REPORTS.LT, IGI REPORTS.LU, IGI REPORTS.LV, IGI REPORTS.LW, IGI REPORTS.LX, IGI REPORTS.LY, IGI REPORTS.LZ, IGI REPORTS.MA, IGI REPORTS.MB, IGI REPORTS.MC, IGI REPORTS.MD, IGI REPORTS.ME, IGI REPORTS.MF, IGI REPORTS.MG, IGI REPORTS.MH, IGI REPORTS.MI, IGI REPORTS.MJ, IGI REPORTS.MK, IGI REPORTS.ML, IGI REPORTS.MM, IGI REPORTS.MN, IGI REPORTS.MO, IGI REPORTS.MP, IGI REPORTS.MQ, IGI REPORTS.MR, IGI REPORTS.MS, IGI REPORTS.MT, IGI REPORTS.MU, IGI REPORTS.MV, IGI REPORTS.MW, IGI REPORTS.MX, IGI REPORTS.MY, IGI REPORTS.MZ, IGI REPORTS.NA, IGI REPORTS.NB, IGI REPORTS.NC, IGI REPORTS.ND, IGI REPORTS.NE, IGI REPORTS.NF, IGI REPORTS.NG, IGI REPORTS.NH, IGI REPORTS.NI, IGI REPORTS.NJ, IGI REPORTS.NK, IGI REPORTS.NL, IGI REPORTS.NM, IGI REPORTS.NN, IGI REPORTS.NO, IGI REPORTS.NP, IGI REPORTS.NQ, IGI REPORTS.NR, IGI REPORTS.NS, IGI REPORTS.NT, IGI REPORTS.NU, IGI REPORTS.NV, IGI REPORTS.NW, IGI REPORTS.NX, IGI REPORTS.NY, IGI REPORTS.NZ, IGI REPORTS.OA, IGI REPORTS.OB, IGI REPORTS.OC, IGI REPORTS.OD, IGI REPORTS.OE, IGI REPORTS.OF, IGI REPORTS.OG, IGI REPORTS.OH, IGI REPORTS.OI, IGI REPORTS.OJ, IGI REPORTS.OK, IGI REPORTS.OL, IGI REPORTS.OM, IGI REPORTS.ON, IGI REPORTS.OO, IGI REPORTS.OP, IGI REPORTS.OQ, IGI REPORTS.OR, IGI REPORTS.OS, IGI REPORTS.OT, IGI REPORTS.OU, IGI REPORTS.OV, IGI REPORTS.OW, IGI REPORTS.OX, IGI REPORTS.OY, IGI REPORTS.OZ, IGI REPORTS.PA, IGI REPORTS.PB, IGI REPORTS.PC, IGI REPORTS.PD, IGI REPORTS.PE, IGI REPORTS.PF, IGI REPORTS.PG, IGI REPORTS.PH, IGI REPORTS.PI, IGI REPORTS.PJ, IGI REPORTS.PK, IGI REPORTS.PL, IGI REPORTS.PM, IGI REPORTS.PN, IGI REPORTS.PO, IGI REPORTS.PP, IGI REPORTS.PQ, IGI REPORTS.PR, IGI REPORTS.PS, IGI REPORTS.PT, IGI REPORTS.PU, IGI REPORTS.PV, IGI REPORTS.PW, IGI REPORTS.PX, IGI REPORTS.PY, IGI REPORTS.PZ, IGI REPORTS.QA, IGI REPORTS.QB, IGI REPORTS.QC, IGI REPORTS.QD, IGI REPORTS.QE, IGI REPORTS.QF, IGI REPORTS.QG, IGI REPORTS.QH, IGI REPORTS.QI, IGI REPORTS.QJ, IGI REPORTS.QK, IGI REPORTS.QL, IGI REPORTS.QM, IGI REPORTS.QN, IGI REPORTS.QO, IGI REPORTS.QP, IGI REPORTS.QQ, IGI REPORTS.QR, IGI REPORTS.QS, IGI REPORTS.QU, IGI REPORTS.QV, IGI REPORTS.QW, IGI REPORTS.QX, IGI REPORTS.QY, IGI REPORTS.QZ, IGI REPORTS.RA, IGI REPORTS.RB, IGI REPORTS.RC, IGI REPORTS.RD, IGI REPORTS.RE, IGI REPORTS.RF, IGI REPORTS.RG, IGI REPORTS.RH, IGI REPORTS.RI, IGI REPORTS.RJ, IGI REPORTS.RK, IGI REPORTS.RL, IGI REPORTS.RM, IGI REPORTS.RN, IGI REPORTS.RO, IGI REPORTS.RP, IGI REPORTS.RQ, IGI REPORTS.RR, IGI REPORTS.RS, IGI REPORTS.RT, IGI REPORTS.RU, IGI REPORTS.RV, IGI REPORTS.RW, IGI REPORTS.RX, IGI REPORTS.RY, IGI REPORTS.RZ, IGI REPORTS.SA, IGI REPORTS.SB, IGI REPORTS.SC, IGI REPORTS.SD, IGI REPORTS.SE, IGI REPORTS.SF, IGI REPORTS.SG, IGI REPORTS.SH, IGI REPORTS.SI, IGI REPORTS.SJ, IGI REPORTS.SK, IGI REPORTS.SL, IGI REPORTS.SM, IGI REPORTS.SN, IGI REPORTS.SO, IGI REPORTS.SP, IGI REPORTS.SQ, IGI REPORTS.SR, IGI REPORTS.SS, IGI REPORTS.ST, IGI REPORTS.SU, IGI REPORTS.SV, IGI REPORTS.SW, IGI REPORTS.SX, IGI REPORTS.SY, IGI REPORTS.SZ, IGI REPORTS.TA, IGI REPORTS.TB, IGI REPORTS.TC, IGI REPORTS.TD, IGI REPORTS.TE, IGI REPORTS.TF, IGI REPORTS.TG, IGI REPORTS.TH, IGI REPORTS.TI, IGI REPORTS.TJ, IGI REPORTS.TK, IGI REPORTS.TL, IGI REPORTS.TM, IGI REPORTS.TN, IGI REPORTS.TO, IGI REPORTS.TP, IGI REPORTS.TQ, IGI REPORTS.TR, IGI REPORTS.TS, IGI REPORTS.TU, IGI REPORTS.TV, IGI REPORTS.TW, IGI REPORTS.TX, IGI REPORTS.TY, IGI REPORTS.TZ, IGI REPORTS.UA, IGI REPORTS.UB, IGI REPORTS.UC, IGI REPORTS.UD, IGI REPORTS.UE, IGI REPORTS.UF, IGI REPORTS.UG, IGI REPORTS.UH, IGI REPORTS.UI, IGI REPORTS.UJ, IGI REPORTS.UK, IGI REPORTS.UL, IGI REPORTS.UM, IGI REPORTS.UN, IGI REPORTS.UO, IGI REPORTS.UP, IGI REPORTS.UQ, IGI REPORTS.UR, IGI REPORTS.US, IGI REPORTS.UT, IGI REPORTS.UU, IGI REPORTS.UV, IGI REPORTS.UW, IGI REPORTS.UX, IGI REPORTS.UY, IGI REPORTS.UZ, IGI REPORTS.VA, IGI REPORTS.VB, IGI REPORTS.VC, IGI REPORTS.VD, IGI REPORTS.VE, IGI REPORTS.VF, IGI REPORTS.VG, IGI REPORTS.VH, IGI REPORTS.VI, IGI REPORTS.VJ, IGI REPORTS.VK, IGI REPORTS.VL, IGI REPORTS.VM, IGI REPORTS.VN, IGI REPORTS.VO, IGI REPORTS.VP, IGI REPORTS.VQ, IGI REPORTS.VR, IGI REPORTS.VS, IGI REPORTS.VT, IGI REPORTS.VU, IGI REPORTS.VV, IGI REPORTS.VW, IGI REPORTS.VX, IGI REPORTS.VY, IGI REPORTS.VZ, IGI REPORTS.WA, IGI REPORTS.WB, IGI REPORTS.WC, IGI REPORTS.WD, IGI REPORTS.WE, IGI REPORTS.WF, IGI REPORTS.WG, IGI REPORTS.WH, IGI REPORTS.WI, IGI REPORTS.WJ, IGI REPORTS.WK, IGI REPORTS.WL, IGI REPORTS.WM, IGI REPORTS.WN, IGI REPORTS.WO, IGI REPORTS.WP, IGI REPORTS.WQ, IGI REPORTS.WR, IGI REPORTS.WS, IGI REPORT

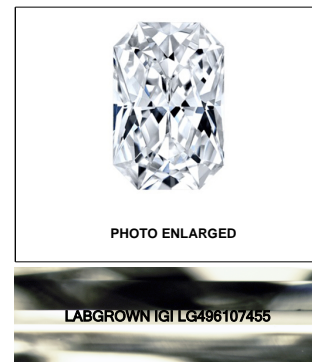
© INTERNATIONAL GEMOLOGICAL INSTITUTE, INC.

Diagram illustrating the cross-section of a diamond-shaped structure. The dimensions are as follows:

- Top width: 66%
- Right height: 67.8%
- Left height: 52.5%
- Left thickness: 11.5%

Labels: "Slightly Thick" (pointing to the left edge), "Pointed" (pointing to the bottom edge).

Red symbols indicate internal characteristics.
Green symbols indicate external characteristics.

LASERSCRIBESM

© IGI 2020, International Gemological Institute

FD - 10 20

www.igi.org



November 15, 2021	IGI Report No. LG498107455	OUT-COMMERCE RECT. MODIFIED	BRILLIANT	1.00 CARAT	F	VVS 2	67.5%	68%	Slightly Thick	Pointed	EXCELLENT	EXCELLENT	NONE	LAGROWN IGI LG498107455	<p>Comments:</p> <p>This Laboratory Grown Diamond was created by Chemical Vapor Deposition (CVD) growth treatment. It may include post-growth treatment.</p> <p>Type IIIa</p>
			6.61 X 5.05 X 3.41 MM	Carat Weight	Color Grade	Clarity Grade	Depth	Table	Girdle	Culet	Polish	Symmetry	Fluorescence	Inscriptions (I)	

This Laboratory Grown Diamond was created by Chemical Vapor Deposition (CVD) growth process and may include post-growth treatment.