



**ELECTRONIC COPY**

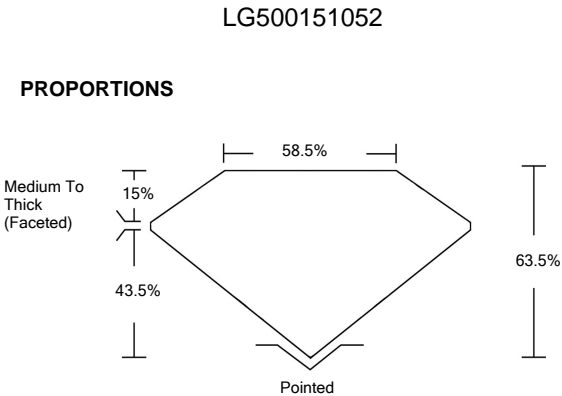
# LABORATORY GROWN DIAMOND REPORT

# LABORATORY GROWN DIAMOND REPORT

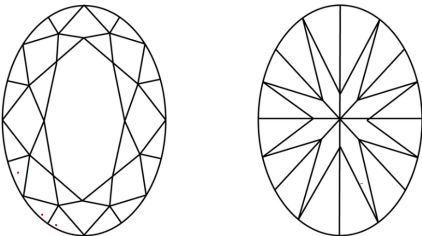
November 27, 2021	
IGI Report Number	LG500151052
Description	LABORATORY GROWN DIAMOND
Shape and Cutting Style	OVAL BRILLIANT
Measurements	10.53 X 7.48 X 4.75 MM
GRADING RESULTS	
Carat Weight	2.31 CARATS
Color Grade	FANCY BLUE
Clarity Grade	VS 1

ADDITIONAL GRADING INFORMATION	
Polish	EXCELLENT
Symmetry	EXCELLENT
Fluorescence	NONE
Inscription(s)	LABGROWN IGI LG500151052

Comments: As Grown - No indication of post-growth treatment.  
This Laboratory Grown Diamond was created by High Pressure High Temperature (HPHT) growth process.



## CLARITY CHARACTERISTICS



## KEY TO SYMBOLS

Red symbols indicate internal characteristics.  
Green symbols indicate external characteristics.

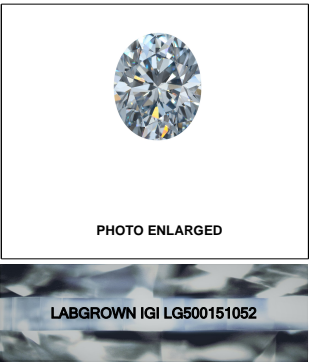
## GRADING SCALES

COLOR GRADING SCALE	CL		NC		FT		VLT		LT	
	COLORLESS D-F		NEAR COLORLESS G-J		FAINT K-M		VERY LIGHT N-R		LIGHT S-Z	
CLARITY (10x) GRADING SCALE	FL IF		VVS		VS		SI		I	
	FLAWLESS INTERNALLY FLAWLESS		VERY VERY SLIGHTLY INCLUDED		VERY SLIGHTLY INCLUDED		SLIGHTLY INCLUDED		INCLUDED	

The laboratory grown diamond described in this Report (Report) has been graded, tested, analyzed, examined and/or inscribed by International Gemological Institute (I.G.I.). A laboratory grown diamond is one that has essentially the same chemical, physical and optical properties as a mined or natural diamond. I.G.I. employs a synthetic process (a manufactured product). I.G.I. employs and utilizes those techniques and equipment currently available to I.G.I., including, without limitation, 10X magnification, corrected triplet loupe, binocular microscope, master color comparison stones, non-contact optical and other devices or properties as a means to identify and grade diamonds. I.G.I. uses instruments and/or processes as deemed appropriate by I.G.I. This Report includes advanced security features. A duly accredited gemologist or jeweler can advise you with respect to the importance of and interrelationship between cut, color, clarity and carat weight.

**THIS REPORT IS NEITHER A GUARANTEE, VALUATION, NOR APPRAISAL OF THE GEMSTONE DESCRIBED HEREIN. PLEASE REVIEW THE LIMITATIONS AND RESTRICTIONS SET FORTH ONLINE. FOR ADDITIONAL INFORMATION, IMPORTANT LIMITATIONS AND DISCLAIMERS, PLEASE GO TO [WWW.IGI.ORG](http://WWW.IGI.ORG) OR CALL 1-866-BUY-IGI.**

© INTERNATIONAL GEMOLOGICAL INSTITUTE, INC.

**LASERSCRIBE<sup>SM</sup>**

© IGI 2020, International Gemological Institute

FD - 10 20

**www.igi.org**



# IGI

<p>November 27, 2021</p> <p>IGI Report No. LGS001151052</p>	<p>2.31 CARATS</p> <p>FANCY BLUE</p> <p>VS 1</p> <p>63.5%</p> <p>56.5%</p> <p>Medium To Thick (Faced)</p> <p>Polished</p> <p>EXCELLENT</p> <p>EXCELLENT</p> <p>NONE</p> <p>LARGESIDE (IGI)</p> <p>LGS001151052</p>	<p>10.63 CT 7.48 X 4.75 MM</p> <p>Carat Weight</p> <p>Color Grade</p> <p>Clarity Grade</p> <p>Depth</p> <p>Table</p> <p>Girdle</p> <p>Culet</p> <p>Polish</p> <p>Symmetry</p> <p>Fluorescence</p> <p>Inscriptions (s)</p> <p>Comments:</p>	<p>As Grown - No indication of post-growth treatment.</p> <p>This Laboratory Grown Diamond was created using a high temperature (HPHT) growth process.</p>
---	--	--	--