



**ELECTRONIC COPY**

LABORATORY GROWN  
DIAMOND REPORT

LABORATORY GROWN DIAMOND REPORT

## LABORATORY GROWN DIAMOND REPORT

December 2, 2021	
IGI Report Number	LG500155885
Description	LABORATORY GROWN DIAMOND
Shape and Cutting Style	SQUARE EMERALD CUT
Measurements	8.53 X 8.05 X 5.56 MM

## GRADING RESULTS

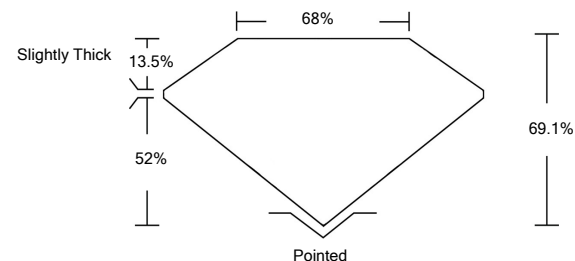
Carat Weight	3.57 CARATS
Color Grade	G
Clarity Grade	VS 2

### ADDITIONAL GRADING INFORMATION

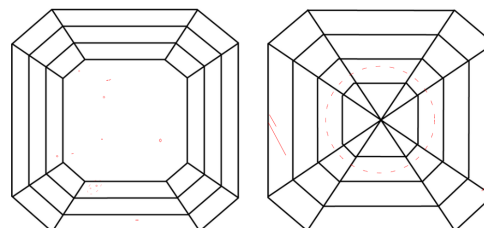
Polish	EXCELLENT
Symmetry	EXCELLENT
Fluorescence	NONE
Inscription(s)	LABGROWN IGI LG500155885

Comments: This Laboratory Grown Diamond was created by Chemical Vapor Deposition (CVD) growth process and may include post-growth treatment  
Type IIa

## PROPORTIONS



## CLARITY CHARACTERISTICS

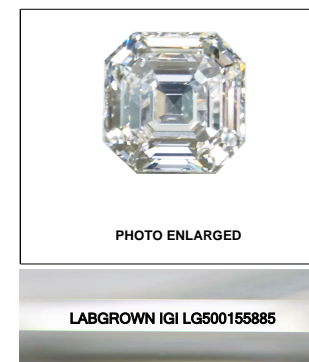


## KEY TO SYMBOLS

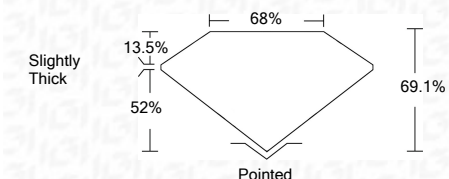
Red symbols indicate internal characteristics.  
Green symbols indicate external characteristics.

## GRADING SCALES

COLOR GRADING SCALE	CL		NC		FT		VLT		LT	
	COLORLESS D-F		NEAR COLORLESS G-J		FAINT K-M		VERY LIGHT N-R		LIGHT S-Z	
CLARITY (10x) GRADING SCALE	FL	IF	VVS		VS		SI		I	
	FLAWLESS INTERNALLY FLAWLESS		VERY VERY SLIGHTLY INCLUDED		VERY SLIGHTLY INCLUDED		SLIGHTLY INCLUDED		INCLUDED	

LASERSCRIBE<sup>SM</sup>

December 2, 2021	
IGI Report Number	LG500155885
Description	LABORATORY GROWN DIAMOND
Shape and Cutting Style	SQUARE EMERALD CUT
Measurements	8.53 X 8.05 X 5.56 MM
GRADING RESULTS	
Carat Weight	3.57 CARATS
Color Grade	G
Clarity Grade	VS 2



### ADDITIONAL GRADING INFORMATION

Polish	EXCELLENT
Symmetry	EXCELLENT
Fluorescence	NONE
Inscription(s)	LABGROWN IGI LG500155885

Comments: This Laboratory Grown Diamond was created by Chemical Vapor Deposition (CVD) growth process and may include post-growth treatment  
Type IIa



© IGI 2020. International Gemological Institute

FD - 10 20

**www.igi.org**



December 2, 2021
IG Report No. LG500159886
SQUARE EMERALD CUT
3.57 CARATS
L33 X L05 X S.59 MM
Ara Weight
G Color Grade VS 2 H Clarity Grade VS 2 I Depth 69.1% J Table 68%
Slightly Thick
Poined
EXCELLENT
EXCELLENT
NONE
LARGROWN IGI
LG500159886
Comments:
This Laboratory Grown Diamond was created by Chemical Vapor Deposition (CVD) growth process and may include post-growth treatment.
Type IIa