



LG502117946

**IGI LABORATORY GROWN
DIAMOND ID REPORT**

02/04/2022

IGI Report Number **LG502117946**

EMERALD CUT

6.61 - 4.50 X 3.11 MM

Carat Weight	0.91 CARAT
Color Grade	G
Clarity Grade	SI 2
Cut Grade	
Polish	EXCELLENT
Symmetry	EXCELLENT
Fluorescence	NONE
Inscription(s)	LABGROWN IGI LG502117946

Comments: This Laboratory Grown Diamond was created by Chemical Vapor Deposition (CVD) growth process and may include post-growth treatment Type Ila

IGI GEMOLOGICAL REPORT

IGI LABORATORY GROWN DIAMOND IDENTIFICATION REPORT

02/04/2022

IGI Report Number **LG502117946**

Shape and Cutting Style **EMERALD CUT**

Measurements **6.61 - 4.50 X 3.11 MM**

GRADING RESULTS

Carat Weight **0.91 CARAT**

Color Grade **G**

Clarity Grade **SI 2**

Cut Grade

ADDITIONAL GRADING INFORMATION

Polish **EXCELLENT**

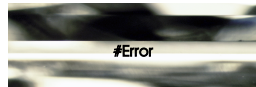
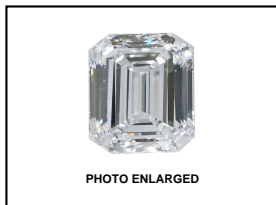
Symmetry **EXCELLENT**

Fluorescence **NONE**

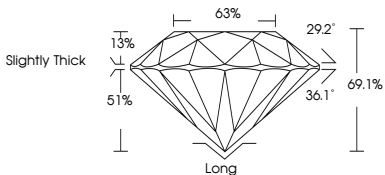
Inscription(s) **LABGROWN IGI LG502117946**

Comments: This Laboratory Grown Diamond was created by Chemical Vapor Deposition (CVD) growth process and may include post-growth treatment Type Ila

ADDITIONAL INFORMATION



LASERSCRIBE SM



**IGI LABORATORY GROWN
DIAMOND ID REPORT**

02/04/2022

IGI Report Number **LG502117946**

EMERALD CUT

6.61 - 4.50 X 3.11 MM

Carat Weight	0.91 CARAT
Color Grade	G
Clarity Grade	SI 2
Cut Grade	
Polish	EXCELLENT
Symmetry	EXCELLENT
Fluorescence	NONE
Inscription(s)	LABGROWN IGI LG502117946

Comments: This Laboratory Grown Diamond was created by Chemical Vapor Deposition (CVD) growth process and may include post-growth treatment Type Ila

This Laboratory Grown Diamond (LGD) described in this Report has been analyzed, graded and Laserscribed® by International Gemological Institute (IGI). A LGD has essentially the chemical, physical and optical properties as a mined diamond, with the exception of being man-made (a manufactured product). LGD's are typically produced by CVD (chemical vapor deposition) or by HPHT (high pressure high temperature) growth processes and may include post growth modifications to change the color. IGI utilizes the most advanced techniques and equipment currently available including, binocular microscopes, diamond color masters, non-contact-optical measuring device, a wide range analytical techniques including FTIR, UV-VIS-NIR, raman spectroscopy, and fluorescence analysis at various excitation wavelengths. This Report includes advanced security features. This Report Terms & Conditions, please visit www.igi.org. By purchasing the report IGI does not agree to purchase or replace the article.

INTERNATIONAL GEMOLOGICAL INSTITUTE, INC



THE DOCUMENT WAS PRODUCED WITH THE FOLLOWING SECURITY MEASURES: SPECIAL DOCUMENT PAPER, INK SCREENS, WATERMARK BACKGROUND DESIGNS HOLOGRAM AND OTHER SECURITY FEATURES NOT LISTED AND DO EXCEED DOCUMENT SECURITY INDUSTRY GUIDELINES