



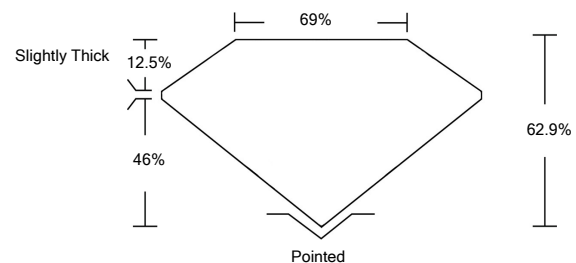
LABORATORY GROWN DIAMOND REPORT

December 6, 2021	
IGI Report Number	LG502137979
Description	LABORATORY GROWN DIAMOND
Shape and Cutting Style	SQUARE EMERALD CUT
Measurements	8.37 X 8.12 X 5.11 MM
GRADING RESULTS	
Carat Weight	3.34 CARATS
Color Grade	H
Clarity Grade	VS 1
ADDITIONAL GRADING INFORMATION	
Polish	EXCELLENT
Symmetry	EXCELLENT
Fluorescence	NONE
Inscription(s)	LABGROWN IGI LG502137979

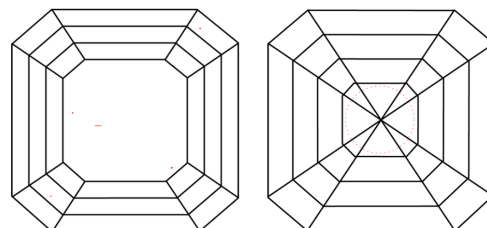
Comments: This Laboratory Grown Diamond was created by Chemical Vapor Deposition (CVD) growth process and may include post-growth treatment Type IIa

LG502137979

PROPORTIONS



CLARITY CHARACTERISTICS

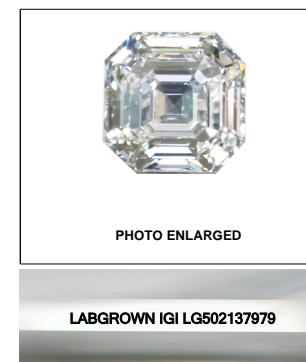


KEY TO SYMBOLS

Red symbols indicate internal characteristics.
Green symbols indicate external characteristics.

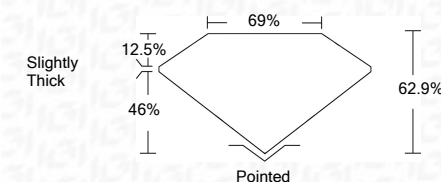
GRADING SCALES

COLOR GRADING SCALE	CL	NC	FT	VL	LT	
	COLORLESS D-F	NEAR COLORLESS G-J	FAINT K-M	VERY LIGHT N-R	LIGHT S-Z	
CLARITY (10x) GRADING SCALE	FL	IF	VVS	VS	SI	I
	FLAWLESS INTERNALLY FLAWLESS	VERY VERY SLIGHTLY INCLUDED	VERY SLIGHTLY INCLUDED	SLIGHTLY INCLUDED	INCLUDED	INCLUDED



LASERSCRIBESM

December 6, 2021	
IGI Report Number	LG502137979
Description	LABORATORY GROWN DIAMOND
Shape and Cutting Style	SQUARE EMERALD CUT
Measurements	8.37 X 8.12 X 5.11 MM
GRADING RESULTS	
Carat Weight	3.34 CARATS
Color Grade	H
Clarity Grade	VS 1



ADDITIONAL GRADING INFORMATION	
Polish	EXCELLENT
Symmetry	EXCELLENT
Fluorescence	NONE
Inscription(s)	LABGROWN IGI LG502137979

Comments: This Laboratory Grown Diamond was created by Chemical Vapor Deposition (CVD) growth process and may include post-growth treatment Type IIa



IGI

December 6, 2021	
IGI Report No. LG502137979	
SQUARE EMERALD CUT	
8.37 X 8.12 X 5.11 MM	
Carat Weight	3.34 CARATS
Color Grade	H
Clarity Grade	VS 1
Depth	62.9%
Table	69%
Girdle	Slightly Thick
Culet	Pointed
Polish	EXCELLENT
Symmetry	EXCELLENT
Fluorescence	NONE
Inscription(s)	LABGROWN IGI LG502137979
Comments:	This Laboratory Grown Diamond was created by Chemical Vapor Deposition (CVD) growth process and may include post-growth treatment Type IIa