



ELECTRONIC COPY

LABORATORY GROWN DIAMOND REPORT

LABORATORY GROWN DIAMOND REPORT

LG502158375

PROPORTIONS

Medium To Slightly Thick (Faceted)

60%

14.5%

45%

62.4%

Pointed

GRADING SCALES

COLOR GRADING SCALE	CL	NC	FT	VLT	LT	
	COLORLESS D-F	NEAR COLORLESS G-J	FAINT K-M	VERY LIGHT N-R	LIGHT S-Z	
CLARITY (10x) GRADING SCALE	FL	IF	VVS	VS	SI	I
	FLAWLESS INTERNALLY FLAWLESS	VERY VERY SLIGHTLY INCLUDED	VERY SLIGHTLY INCLUDED	SLIGHTLY INCLUDED	INCLUDED	

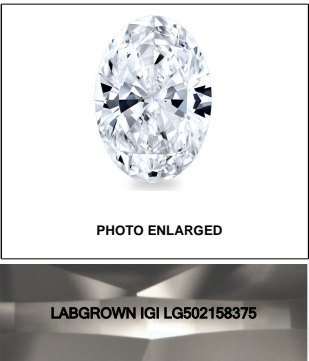
The laboratory grown diamond described in this Report ("Report") has been graded, tested, analyzed, examined and/or inscribed by International Gemological Institute ("IGI"). A laboratory grown diamond is one that has essentially the same chemical, physical and optical properties as a naturally occurring diamond except it was created by man (a manufactured product). IGI employs and utilizes those techniques and equipment currently available to IGI, including, without limitation, 10X magnification, corrected light tube, binocular microscope, master color comparison stones, non-confocal infrared spectrometer, Raman spectroscopy, ultraviolet-visible fluorescence, and such other instruments and/or processes as deemed appropriate by IGI. This Report includes adequate security features. A duly accredited gemologist or jeweler can advise you with regard to the importance of and interrelationship between cut, color, clarity and carat weight.

THIS REPORT IS NEITHER A GUARANTEE, VALUATION, NOR APPRAISAL OF THE GEMSTONE DESCRIBED HEREIN. PLEASE REVIEW THE LIMITATIONS AND RESTRICTIONS SET FORTH ONLINE. FOR MORE INFORMATION ON OUR POLICIES, TERMS AND CONDITIONS, AND DISCLAIMERS, PLEASE GO TO WWW.IGI.ORG OR CALL 1-888-BUY-IGI.

© INTERNATIONAL GEMOLOGICAL INSTITUTE, INC.

KEY TO SYMBOLS

Red symbols indicate internal characteristics.
Green symbols indicate external characteristics.

**LASERSCRIBESM**

© IGI 2020, International Gemological Institute

FD - 10 20

www.igi.org

Diagram illustrating the dimensions and proportions of a diamond shape:

- Top width: 60%
- Left side proportions: 14.5% (top) and 45% (bottom)
- Right side proportion: 62.4%
- Bottom point: Pointed
- Text label: Medium To Slightly Thick (Faceted)

ADDITIONAL GRADING INFORMATION

Polish	EXCELLENT
Symmetry	EXCELLENT
Fluorescence	NONE
Inscription(s)	LABGROWN IGI LG502158375

Comments: As Grown - No indication of post-growth treatment.
This Laboratory Grown Diamond was created by High Pressure High Temperature (HPHT) growth process.
Type II



IGI

IGI Report No. LSG02158375	November 26, 2021
IGI OVAL BRILLIANT	
Carat Weight 1.22 CARAT	
Color Grade D	
Clarity Grade VVS 2	
Depth 62.4%	
Table 86%	
Grain Medium To Slightly Thick (Faceted)	
Culet Polished	
Symmetry EXCELLENT	
Fluorescence EXCELLENT	
Inscriptions(s) NONE	
Comments: LABGROWN (IGI LSG02158375)	
As Grown - No indication of post-growth treatment.	
This Laboratory Grown Diamond was created by high pressure high temperature (HPHT) method.	
Type II	

As Grown - No Indication of post-growth treatment.
This Laboratory Grown Diamond was created by High Pressure High Temperature (HPHT) growth process.
Type II