



ELECTRONIC COPY

LABORATORY GROWN DIAMOND REPORT

LABORATORY GROWN DIAMOND REPORT

LG502160514

PROPORTIONS

The diagram shows a diamond-shaped sign with the following proportions:

- Top width: 70%
- Left side height: 13%
- Left side width: 55%
- Right side height: 70.9%
- Bottom: Pointed

GRADING SCALES

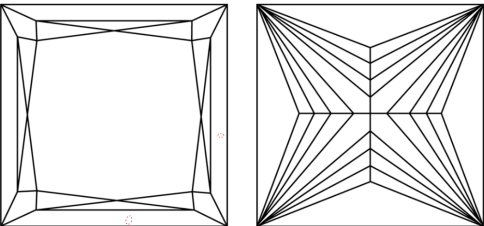
COLOR GRADING SCALE	CL		NC		FT		VLT		LT	
	COLORLESS D-F		NEAR COLORLESS G-J		FAINT K-M		VERY LIGHT N-R		LIGHT S-Z	
CLARITY (10x) GRADING SCALE	FL IF		VVS		VS		SI		I	
	FLAWLESS INTERNALLY FLAWLESS		VERY VERY SLIGHTLY INCLUDED		VERY SLIGHTLY INCLUDED		SLIGHTLY INCLUDED		INCLUDED	

The laboratory grown diamond described in this Report ("Report") has been graded, tested, analyzed, examined and/or inscribed by International Gemological Institute ("IGI"). Laboratory grown diamonds are one of the same chemical, physical and optical properties as mined diamonds and are of the same grade, color, clarity and carat weight. IGI employs and utilizes those techniques and equipment currently available to IGI, including, without limitation, 10X magnification, corrected viewing, ultraviolet light, infrared spectroscopy, Raman spectroscopy, diamond measuring device, Diamond Sure™, Diamond View™, Spectrophotometer and such other instruments and/or processes as deemed appropriate by IGI. This Report includes advanced security features. A duly accredited gemologist or jeweler can advise you with regard to the importance of and interrelationship between cut, color, clarity and carat weight.

THIS REPORT IS NEITHER A GUARANTEE, VALUATION, NOR APPRAISAL OF THE GEMSTONE DESCRIBED HEREIN. PLEASE REVIEW THE LIMITATIONS AND RESTRICTIONS SET FORTH ONLINE. FOR THE FULL DISCLOSURE OF THE LIMITATIONS AND DISCLAIMERS, PLEASE GO TO WWW.IGI.ORG OR CALL 1-888-BUY-IGI.

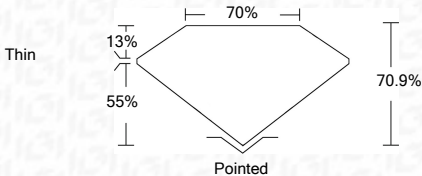
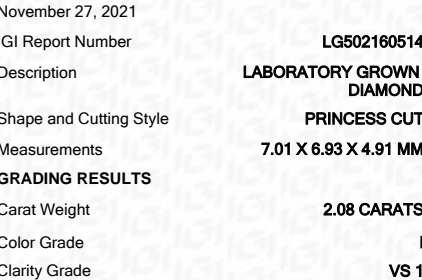
© INTERNATIONAL GEMOLOGICAL INSTITUTE, INC.

CLARITY CHARACTERISTICS



KEY TO SYMBOLS

Red symbols indicate internal characteristics.
Green symbols indicate external characteristics.

**LASERSCRIBESM**

ADDITIONAL GRADING INFORMATION

Polish	EXCELLENT
Symmetry	EXCELLENT
Fluorescence	NONE
Inscription(s)	LABGROWN IGI LG502160514

Inscription(s) **LABGROWN IGI LG502160514**

Comments: This Laboratory Grown Diamond was created by Chemical Vapor Deposition (CVD) growth process and may include post-growth treatment.
Type IIa



IGI

	November 27, 2021
IGL Report No.	LGS92T68514
PRINCESS CUT	
Gross Weight	1.01 Carats
Diamond Dimensions	7.0 x 6.8 x 4.9 mm
Carat Weight	2.08 CARATS
Color Grade	I
Clarity Grade	VS 1
Depth	70.9%
Table	70%
Girdle	Thin
Culet	Poited
Polish	EXCELLENT
Symmetry	EXCELLENT
Fluorescence	NONE
Inscriptions(s)	LARGROWN IGI LGS92T68514
Comments:	This Laboratory Grown Diamond was created by Chemical Vapor Deposition (CVD) growth process and may include post-growth treatments. Type IIa

This Laboratory Grown Diamond was created by Chemical Vapor Deposition (CVD) growth process and may include post-growth treatment.

