



**LABORATORY GROWN DIAMOND REPORT**

November 10, 2021  
 IGI Report Number **LG502193863**  
 Description **LABORATORY GROWN  
DIAMOND**  
 Shape and Cutting Style **ROUND BRILLIANT**  
 Measurements **5.67 - 5.72 X 3.38 MM**

**GRADING RESULTS**

Carat Weight **0.70 CARAT**  
 Color Grade **D**  
 Clarity Grade **VVS 1**  
 Cut Grade **VERY GOOD**

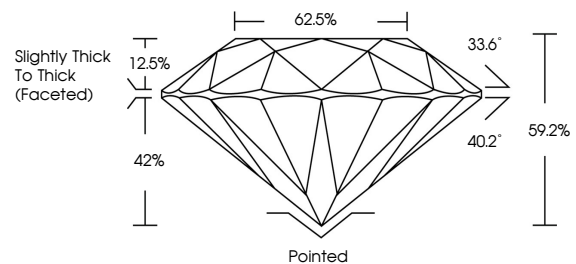
**ADDITIONAL GRADING INFORMATION**

Polish **EXCELLENT**  
 Symmetry **VERY GOOD**  
 Fluorescence **NONE**  
 Inscription(s) **LABGROWN IGI LG502193863**

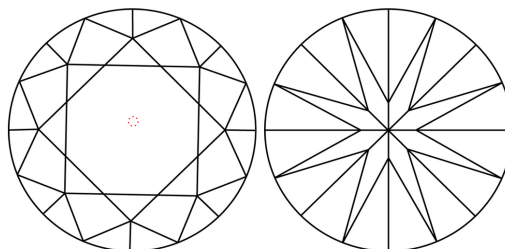
Comments: As Grown - No indication of post-growth treatment  
 This Laboratory Grown Diamond was created by High Pressure High Temperature (HPHT) growth process Type II

**LG502193863**

**PROPORTIONS**



**CLARITY CHARACTERISTICS**

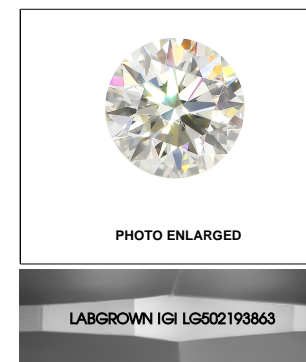


**KEY TO SYMBOLS**

Red symbols indicate internal characteristics.  
 Green symbols indicate external characteristics.

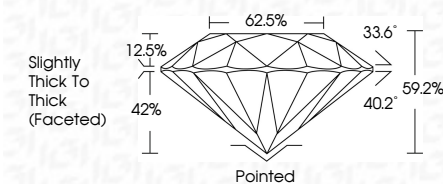
**GRADING SCALES**

COLOR GRADING SCALE	CL	NC	FT	VLT	LT	
	COLORLESS D-F	NEAR COLORLESS G-J	FAINT K-M	VERY LIGHT N-R	LIGHT S-Z	
CLARITY (10x) GRADING SCALE	FL	IF	VVS	VS	SI	I
	FLAWLESS INTERNALLY FLAWLESS	VERY VERY SLIGHTLY INCLUDED	VERY SLIGHTLY INCLUDED	SLIGHTLY INCLUDED	INCLUDED	



**LASERSCRIBE<sup>SM</sup>**

November 10, 2021  
 IGI Report Number **LG502193863**  
 Description **LABORATORY GROWN  
DIAMOND**  
 Shape and Cutting Style **ROUND BRILLIANT**  
 Measurements **5.67 - 5.72 X 3.38 MM**  
**GRADING RESULTS**  
 Carat Weight **0.70 CARAT**  
 Color Grade **D**  
 Clarity Grade **VVS 1**  
 Cut Grade **VERY GOOD**



**ADDITIONAL GRADING INFORMATION**

Polish **EXCELLENT**  
 Symmetry **VERY GOOD**  
 Fluorescence **NONE**  
 Inscription(s) **LABGROWN IGI LG502193863**

Comments: As Grown - No indication of post-growth treatment  
 This Laboratory Grown Diamond was created by High Pressure High Temperature (HPHT) growth process Type II



**IGI**

November 10, 2021  
 IGI Report No. **LG502193863**  
**ROUND BRILLIANT**  
**5.67 - 5.72 X 3.38 MM**  
 Carat Weight **0.70 CARAT**  
 Color Grade **D**  
 Clarity Grade **VVS 1**  
 Cut Grade **VERY GOOD**  
 Depth **59.2%**  
 Table **62.5%**  
 Girdle **Slightly Thick To Thick (Faceted)**  
 Culet **Pointed**  
 Polish **EXCELLENT**  
 Symmetry **VERY GOOD**  
 Fluorescence **NONE**  
 Inscription(s) **LABGROWN IGI LG502193863**  
 Comments: **As Grown - No indication of post-growth treatment**  
 This Laboratory Grown Diamond was created by High Pressure High Temperature (HPHT) growth process Type II