



LABORATORY GROWN DIAMOND REPORT

November 18, 2021
 IGI Report Number **LG502193891**
 Description **LABORATORY GROWN
DIAMOND**
 Shape and Cutting Style **ROUND BRILLIANT**
 Measurements **5.70 - 5.73 X 3.60 MM**

GRADING RESULTS

Carat Weight **0.74 CARAT**
 Color Grade **D**
 Clarity Grade **VS 1**
 Cut Grade **EXCELLENT**

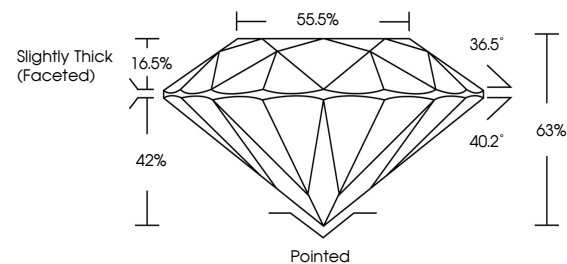
ADDITIONAL GRADING INFORMATION

Polish **EXCELLENT**
 Symmetry **EXCELLENT**
 Fluorescence **NONE**
 Inscription(s) **LABGROWN IGI LG502193891**

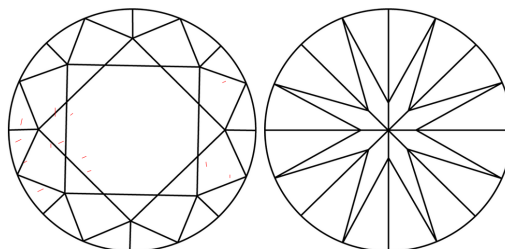
Comments: As Grown - No indication of post-growth treatment
 This Laboratory Grown Diamond was created by High Pressure High Temperature (HPHT) growth process Type II

LG502193891

PROPORTIONS



CLARITY CHARACTERISTICS

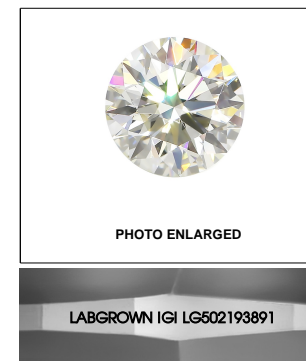


KEY TO SYMBOLS

Red symbols indicate internal characteristics.
 Green symbols indicate external characteristics.

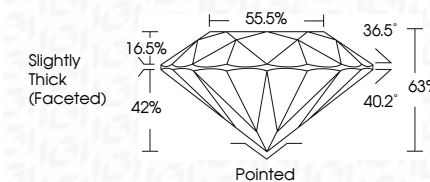
GRADING SCALES

| | | | | | | |
|-----------------------------|------------------------------|-----------------------------|------------------------|-------------------|-----------|---|
| COLOR GRADING SCALE | CL | NC | FT | VLT | LT | |
| | COLORLESS D-F | NEAR COLORLESS G-J | FAINT K-M | VERY LIGHT N-R | LIGHT S-Z | |
| CLARITY (10x) GRADING SCALE | FL | IF | VVS | VS | SI | I |
| | FLAWLESS INTERNALLY FLAWLESS | VERY VERY SLIGHTLY INCLUDED | VERY SLIGHTLY INCLUDED | SLIGHTLY INCLUDED | INCLUDED | |



LASERSCRIBESM

November 18, 2021
 IGI Report Number **LG502193891**
 Description **LABORATORY GROWN
DIAMOND**
 Shape and Cutting Style **ROUND BRILLIANT**
 Measurements **5.70 - 5.73 X 3.60 MM**
GRADING RESULTS
 Carat Weight **0.74 CARAT**
 Color Grade **D**
 Clarity Grade **VS 1**
 Cut Grade **EXCELLENT**



ADDITIONAL GRADING INFORMATION

Polish **EXCELLENT**
 Symmetry **EXCELLENT**
 Fluorescence **NONE**
 Inscription(s) **LABGROWN IGI LG502193891**

Comments: As Grown - No indication of post-growth treatment
 This Laboratory Grown Diamond was created by High Pressure High Temperature (HPHT) growth process Type II



IGI

November 18, 2021
 IGI Report No. **LG502193891**
ROUND BRILLIANT
 5.70 - 5.73 X 3.60 MM
 Carat Weight **0.74 CARAT**
 Color Grade **D**
 Clarity Grade **VS 1**
 Cut Grade **EXCELLENT**
 Depth **63%**
 Table **55.5%**
 Girdle **Slightly Thick (Faceted)**
 Culet **Pointed**
 Polish **EXCELLENT**
 Symmetry **EXCELLENT**
 Fluorescence **NONE**
 Inscription(s) **LABGROWN IGI LG502193891**
 Comments: **As Grown - No indication of post-growth treatment**
 This Laboratory Grown Diamond was created by High Pressure High Temperature (HPHT) growth process Type II